

AMD RAID BIOS Settings

Benötigtes BIOS Prime-x399-A 0808.cap

Flashen des der aktuellen BIOS Version über Tool -> EZ Flash

Anschliessend settings überprüfen:

ASUS UEFI BIOS Utility – EZ Mode

11/29/2018 Thursday 12:36 | English | EZ Tuning Wizard(F11)

Information
PRIME X399-A BIOS Ver. 0808
AMD Ryzen Threadripper 2990WX 32-Core Processor
Speed: 3900 MHz
Memory: 131072 MB (DDR4 2133MHz)

CPU Temperature
45°C

CPU Core Voltage
1.277 V

Motherboard Temperature
35°C

DRAM Status
DIMM_A1: G-Skill 16384MB 2133MHz
DIMM_A2: G-Skill 16384MB 2133MHz
DIMM_B1: G-Skill 16384MB 2133MHz
DIMM_B2: G-Skill 16384MB 2133MHz
DIMM_C1: G-Skill 16384MB 2133MHz
DIMM_C2: G-Skill 16384MB 2133MHz
DIMM_D1: G-Skill 16384MB 2133MHz
DIMM_D2: G-Skill 16384MB 2133MHz
Disabled Disabled

SATA Information

FAN Profile
CPU FAN 573 RPM
CHA_FAN1 952 RPM
CHA_FAN2 N/A
CHA_FAN3 N/A
W_PUMP+ N/A
CPU_OPT 940 RPM
EXT FAN1 N/A
EXT FAN2 N/A

CPU FAN
QFan Control

EZ System Tuning
Click the icon to specify your preferred system settings for a power-saving system environment
Quiet
Performance
Energy Saving
Normal

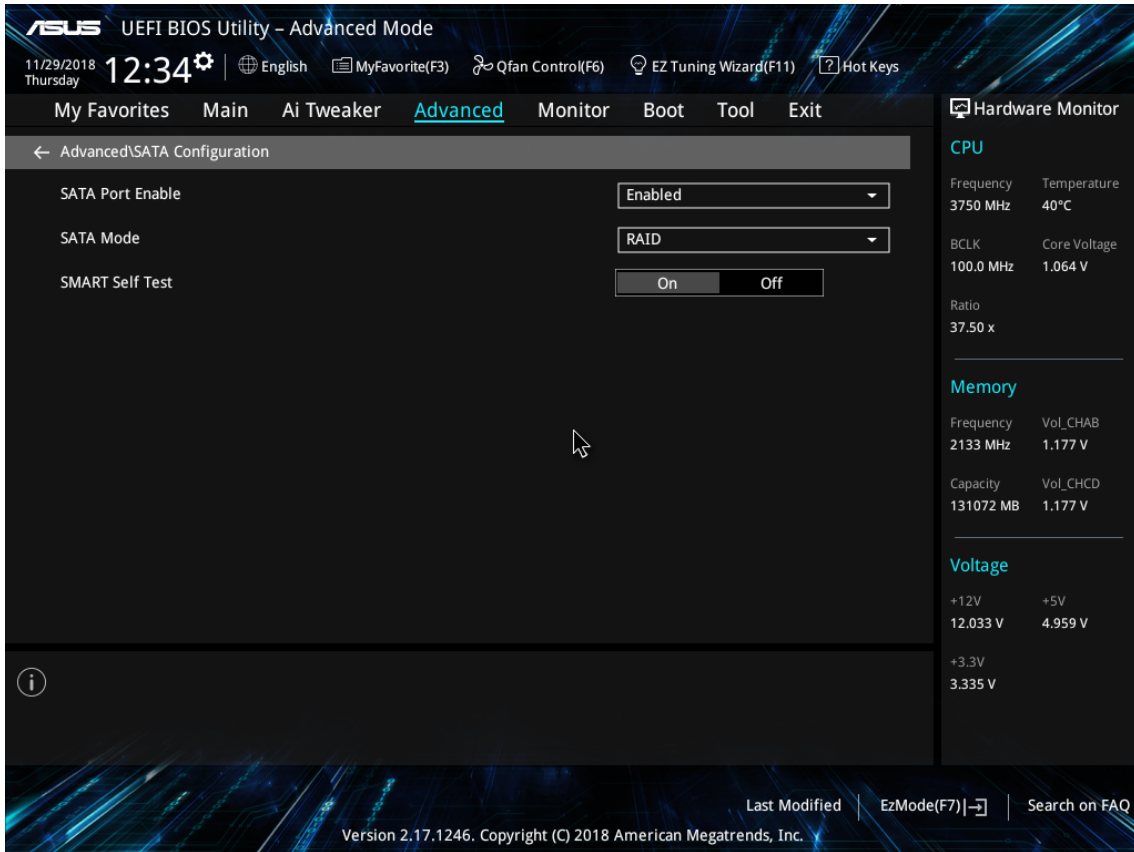
Boot Priority
Choose one and drag the items. Switch all
Windows Boot Manager
UEFI: USB Flash Disk 1100, Partition 1 (30720MB)

Boot Menu(F8)

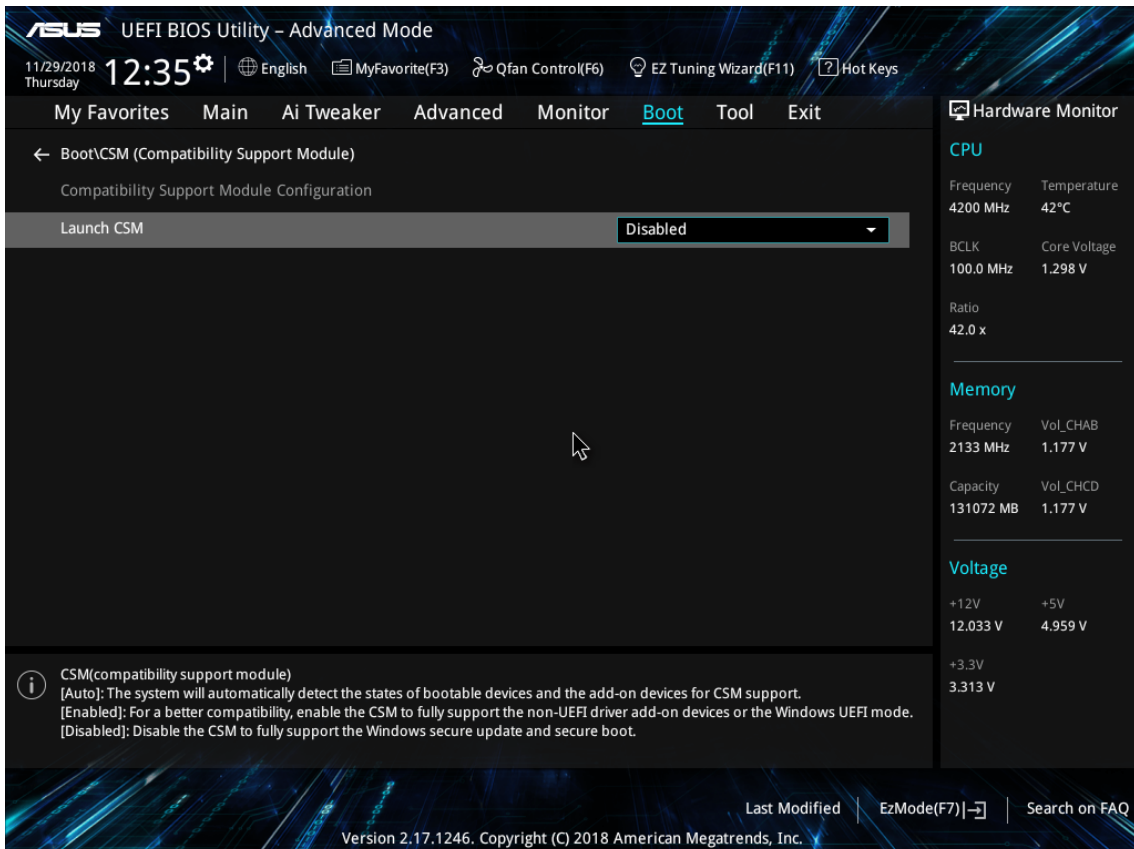
Default(F5) | Save & Exit(F10) | Advanced Mode(F7)| Search on FAQ

BIOS Settings für RAID.

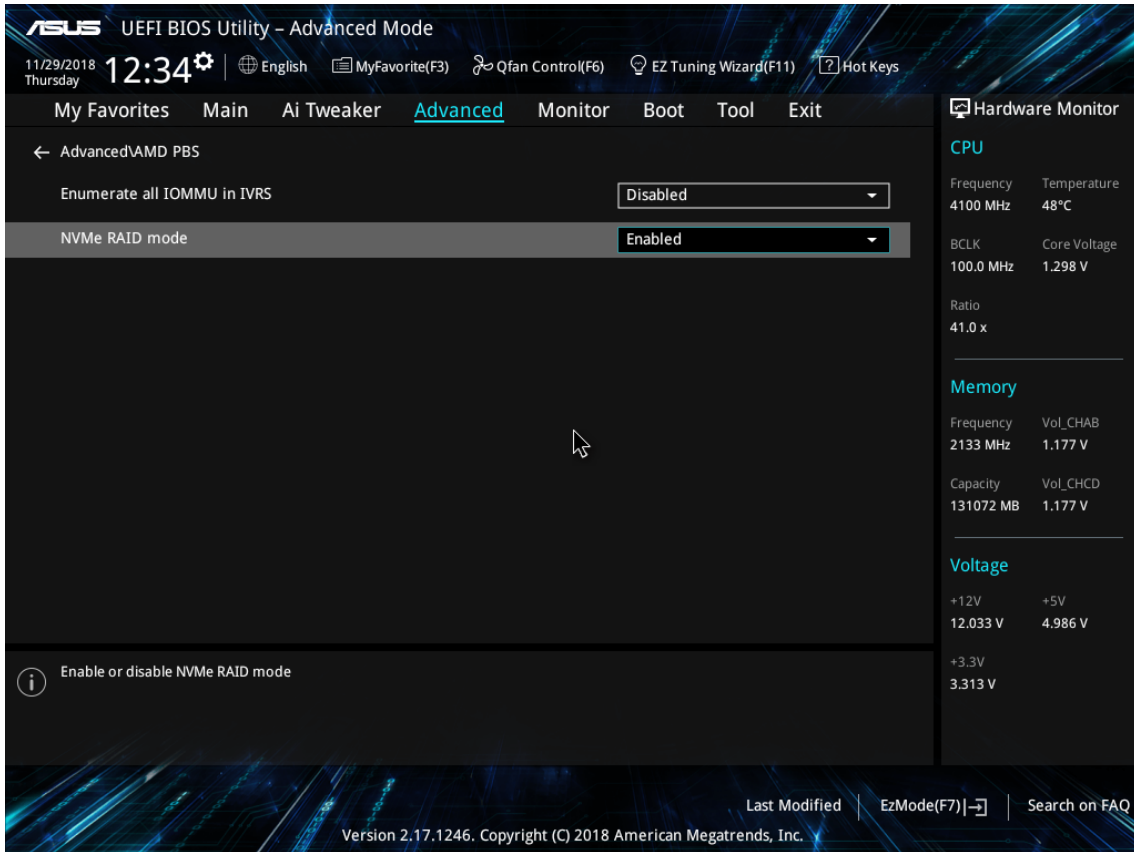
- Advanced-> SATA Configuration-> SATA Mode-> RAID



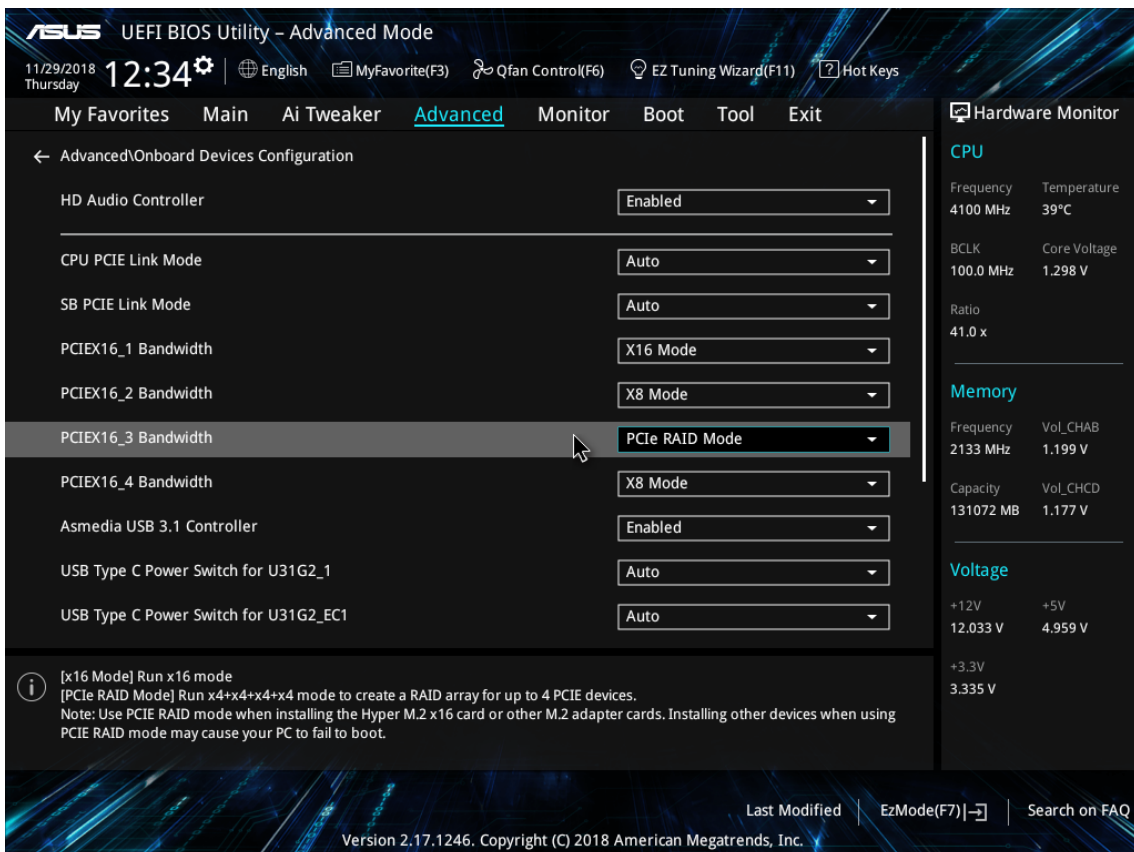
- Boot-> CSM (Compatibility Support Module)



- Advanced-> AMD PBS-> NVMe RAID mode-> Enable

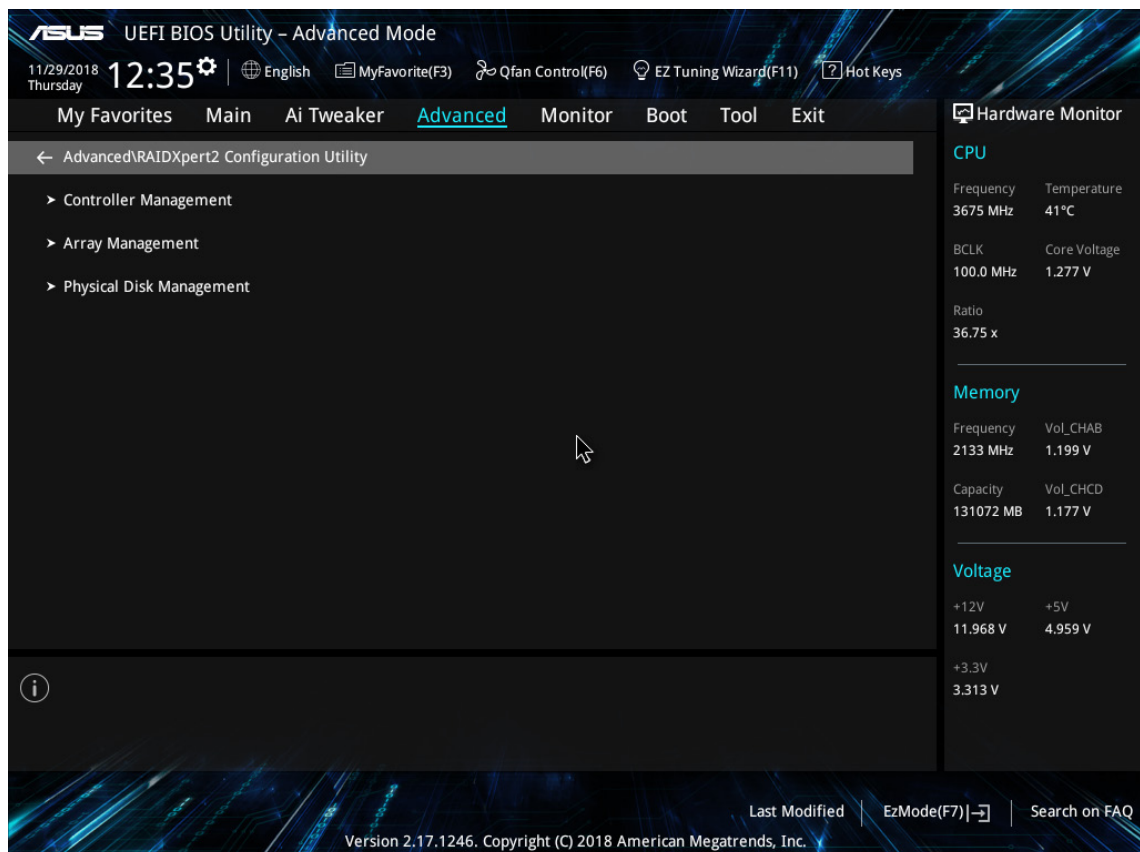
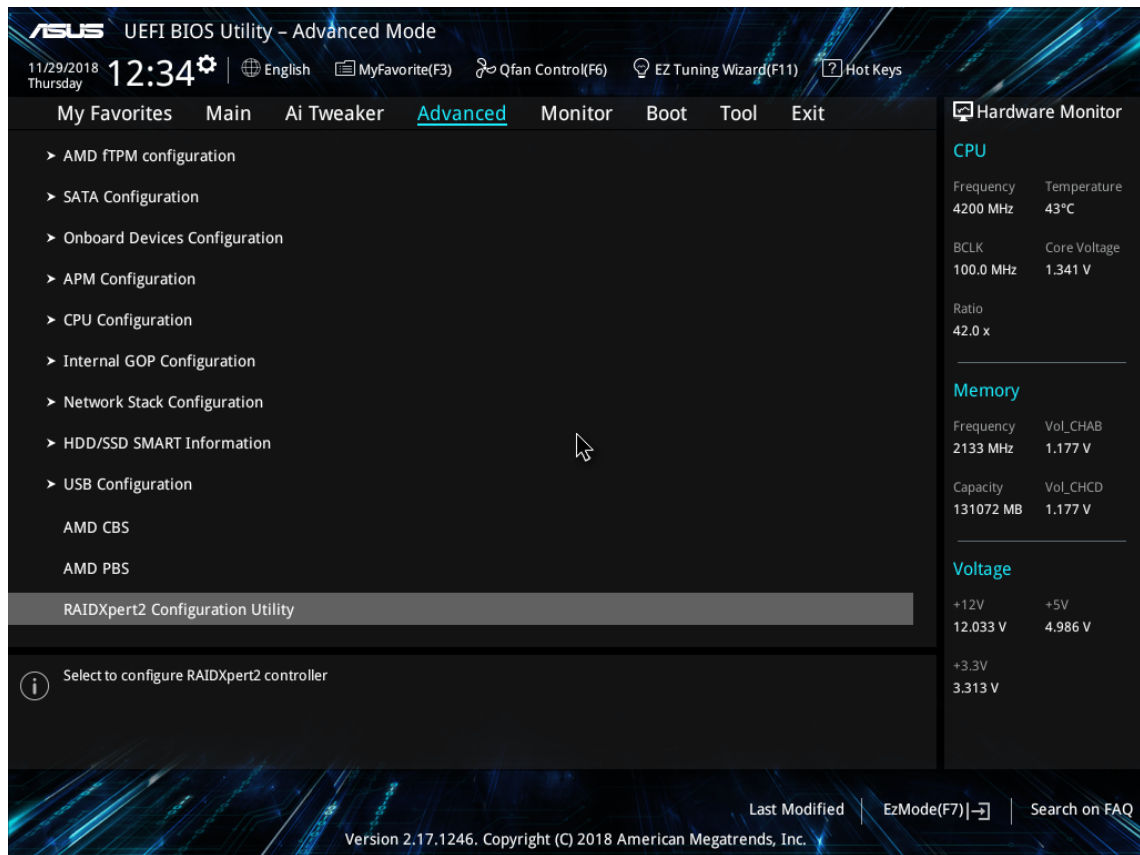


- Advanced-> Onboard Device Configuration



Neustart des Systems über F10 -> Save & Reset

Anschliessend zurück in Advanced in die RAIDXpert2 Configuration Utility um die RAIDs zu überprüfen.



Kontrolle der RAIDs im Array Management

