

Einstellungen für Stereo-Darstellung



NVIDIA-Einstellungen

Manage 3D Settings Restore Defaults

You can change the global 3D settings and create overrides for specific programs. The overrides will be used automatically each time the specified programs are launched.

I would like to use the following 3D settings:

Global Settings Program Settings

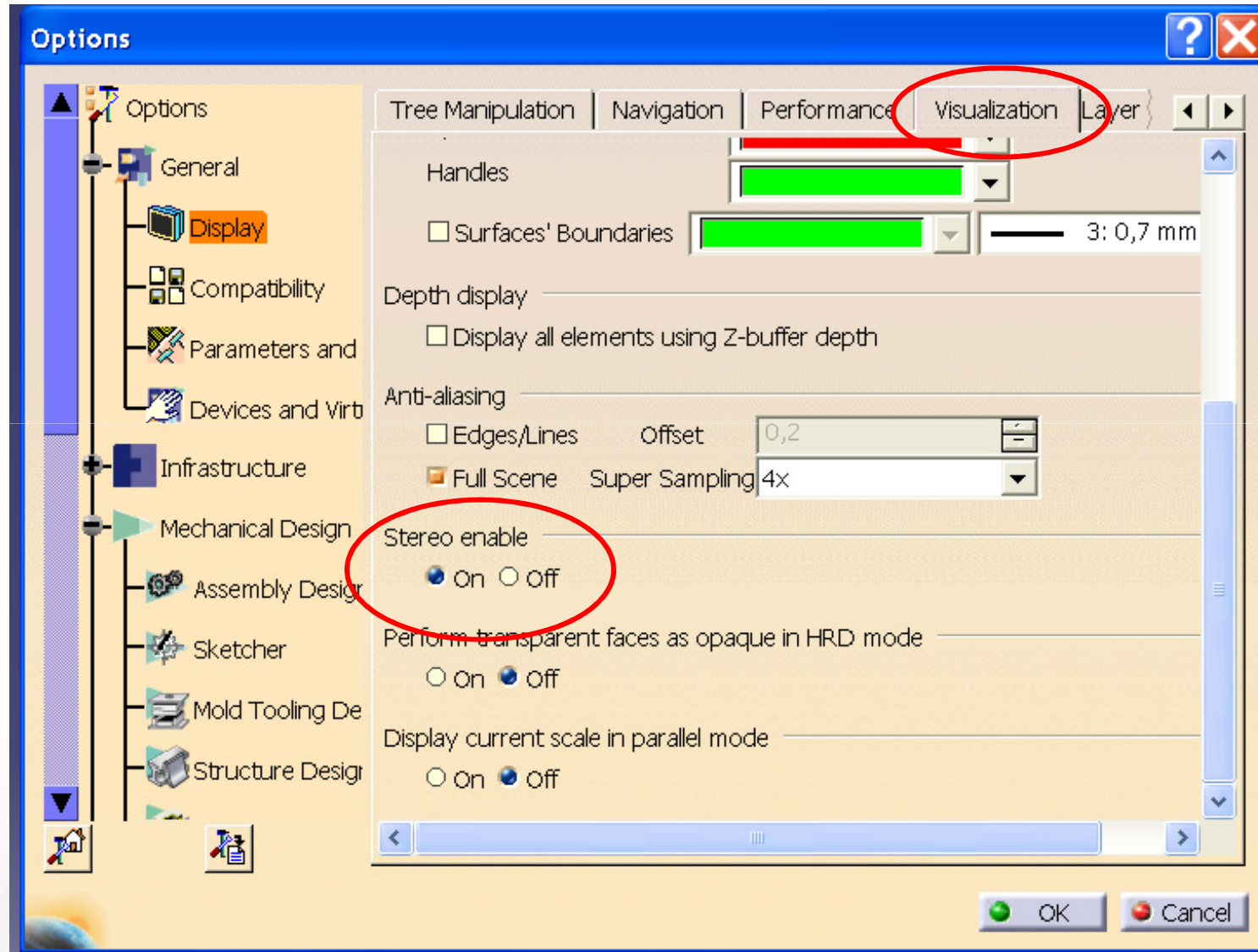
Global presets:
3D App - Default Global Settings Restore

Settings:

Feature	Setting
Force stereo shuttering	Off
Maximize texture memory	Off
Maximum pre-rendered frames	3
Multi-display/mixed-GPU acceleration	Multiple display performance mode
Stereo - Display mode	Use nView Clone mode
Stereo - Enable	On
Stereo - Swap eyes	Off
Threaded optimization	Auto
Triple buffering	Off
Unified back/depth buffer	On
Vertical sync	Use the 3D application setting

Description:
This listbox contains all of the features you can adjust on your NVIDIA GPU-based graphics card. You can change the setting of a feature using the dropdown listbox beside the feature name.

Einstellungen in Tools->Optionen->Display



Tools -> Customize

- Commands + All commands + Stereoscopic....
- Show Parameters + Icon auswählen
- Drag&Drop in die Fußleiste

