

# HydraVision™

## User's Guide

Version 1.1

P/N 137-40319-20

Copyright © 2002, ATI Technologies Inc. All rights reserved.

ATI and all ATI product and product feature names are trademarks and/or registered trademarks of ATI Technologies Inc. All other company and/or product names are trademarks and/or registered trademarks of their respective owners. Features, performance and specifications are subject to change without notice. Product may not be exactly as shown in the diagrams.

Reproduction of this manual, or parts thereof, in any form, without the express written permission of ATI Technologies Inc. is strictly prohibited.

# Disclaimer

While every precaution has been taken in the preparation of this document, ATI Technologies Inc. assumes no liability with respect to the operation or use of ATI hardware, software or other products and documentation described herein, for any act or omission of ATI concerning such products or this documentation, for any interruption of service, loss or interruption of business, loss of anticipatory profits, or for punitive, incidental or consequential damages in connection with the furnishing, performance, or use of the ATI hardware, software, or other products and documentation provided herein.

ATI Technologies Inc. reserves the right to make changes without further notice to a product or system described herein to improve reliability, function or design. With respect to ATI products which this document relates, ATI disclaims all express or implied warranties regarding such products, including but not limited to, the implied warranties of merchantability, fitness for a particular purpose, and non-infringement.

# Table Of Contents

- Introduction** ..... 1
  - Installing HydraVision ..... 2
- HydraVision for Windows® 2000/Windows® XP . . . 5**
  - HydraVision Properties ..... 7
    - Desktop Management Controls ..... 7
    - Dialog control ..... 7
    - Window control ..... 8
    - General ..... 8
    - To enable Individual Applications Settings  
via the Desktop Manager ..... 10
    - To enable Individual Applications Settings  
using the HydraVision titlebar button ..... 11
    - Exclusions ..... 12
    - Hot Keys Controls ..... 13
    - Create/Remove Hot Keys ..... 13
    - Using Hot Keys ..... 14
    - HydraFX ..... 15
    - Transparency Control ..... 15
    - 3D Controls ..... 16
    - Always On Top ..... 16
    - Always Transparent ..... 17
    - Move to monitor ..... 17
    - Restore to monitor ..... 17
    - Internet Explorer Feature ..... 18
    - MultiDesk ..... 19
    - MultiDesk Properties ..... 20
- HydraVision for Windows® 98SE/Windows® Me . . 21**
  - HydraVision Properties ..... 23
    - Desktop Management Controls ..... 23
    - Dialog control ..... 23
    - Window control ..... 24
    - General ..... 25
    - To enable Individual Applications Settings  
via the Desktop Manager ..... 26
    - To enable Individual Applications Settings  
using the HydraVision titlebar button ..... 27
    - Exclusions ..... 28
    - Hot Keys Controls ..... 29
    - Create/Remove Hot Keys ..... 29
    - Using Hot Keys ..... 30

Always On Top .....	31
Move to Monitor .....	31
Restore to Monitor.....	32
Internet Explorer Feature.....	32
MultiDesk.....	33
MultiDesk Properties.....	34
<b>HydraVision for Windows® NT4.0. ....</b>	<b>35</b>
HydraVision Properties .....	37
Desktop Management Controls .....	37
Dialog control.....	37
Window control.....	38
General .....	39
To enable Individual Applications Settings via the Desktop Manager.....	40
To enable Individual Applications Settings using the HydraVision titlebar button .....	41
Exclusions .....	42
Hot Keys Controls .....	43
Create/Remove Hot Keys.....	43
Using Hot Keys .....	44
Always On Top .....	45
Move to monitor.....	45
Restore to monitor .....	46
MultiDesk.....	47
MultiDesk Properties.....	48

# Introduction

## **HydraVision™ Multi-monitor Management Software**

enables you to tailor your desktop to the way you work, so you can manage increased amounts of information and improve your productivity. Your productivity is increased thanks to two aspects of HydraVision:

- Breadth - increase your desktop work space by using up to two monitors.
- Depth - create multiple layers of desktop workspace with MultiDesk.

## **Flexible and easy to use**

Within minutes HydraVision gives you the power to manage independent monitor display features and:

- Determine the behavior of pop-up windows and dialogs in different applications.
- Switch between desktop with a mouse click or "Hot Key".
- Vary your settings from one application to the next.
- Customize the features of HydraVision to an application.

## **Increase your productivity**

To increase your productivity even more, ATI has introduced the following innovative features in HydraVision 3.1:

- Transparent Windows and Menus
- "Always-on-Top"
- More than two monitor support
- Cycle Through Desktops View
- Move To Monitor
- Internet Explorer Extension.
- Installation Wizard

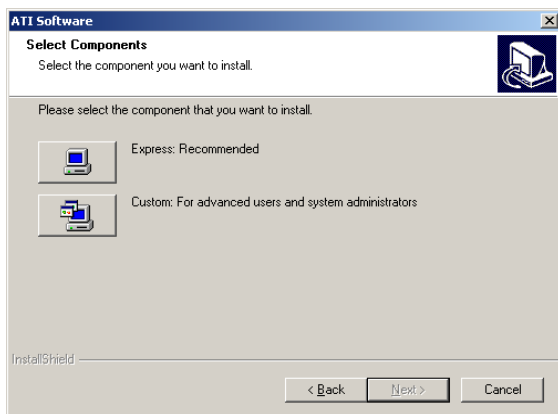
## Installing HydraVision

HydraVision can easily be installed in the following operating systems:

- Windows® 98SE
- Windows® Me
- Windows® NT4.0
- Windows® 2000
- Windows® XP

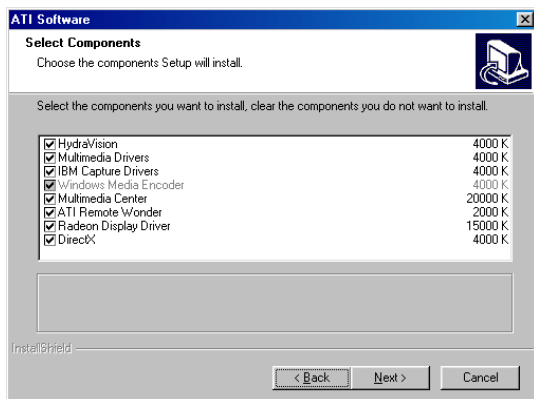
### To install HydraVision perform the following steps:

- 1** Insert the ATI Installation CD into your CD-ROM drive  
*If Windows® runs the CD automatically, proceed to step 6.*
- 2** Click **Start**.
- 3** Select **Run**.
- 4** Type the following:  
**D:\ATISSETUP**  
If **D** is not your CD-ROM drive, substitute **D** with the correct drive letter.
- 5** Click **OK**.
- 6** Click on **ATI Easy Install** to start the Installation Wizard.
- 7** Follow the ATI Setup program prompts to the **Select Components Dialog**.



- 8** Click **Custom** and then select **HydraVision** and any other components you wish to install.

The **Select Components** list may vary.



- 9** **Reboot** your system when prompted.

You are now ready to use the ATI Graphics Accelerator and HydraVision.

The first time HydraVision is loaded a **Wizard** will launch automatically and walk you through the configuration process.

However, the HydraVision Wizard may be re-run at any time by doing the following:

- 1** Click **Start**.
- 2** Click **Programs**.
- 3** Click **ATI HydraVision**.
- 4** Click **HydraVision Wizard**.

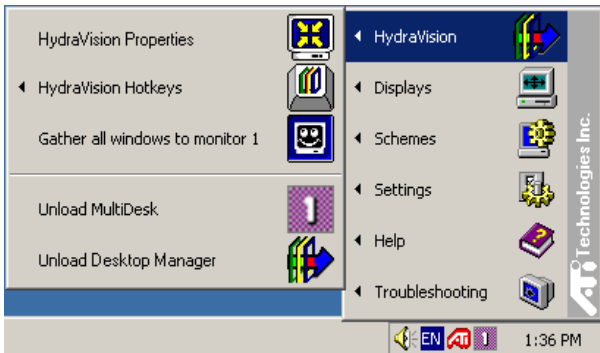


# HydraVision for Windows® 2000/Windows® XP

HydraVision installation creates a Windows® program group for HydraVision multi-monitor management software.

HydraVision and the Desktop Manager are activated whenever Windows® starts. Installing Hydra Vision adds menu options to the ATI Icon.

Click on the ATI icon to access the application's features and help, or to unload the HydraVision Desktop Manager.



## *Accessing HydraVision Desktop Manager*

The HydraVision Desktop Manager allows you to modify your display options. You can access the **Desktop Management** and **Hot Keys Dialogs** by clicking on the appropriate tab in the Desktop Manager.

Along the bottom of each HydraVision Dialog are four buttons: **OK**, **Cancel**, **Apply** and **Help**.

**OK** implements the changes you've made in the HydraVision Dialog and exits the Desktop Manager. Changes take effect immediately unless you see a message prompting you to restart your computer.

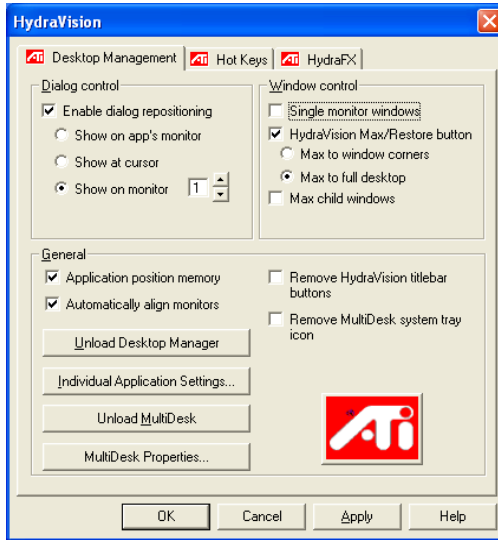
**Cancel** discards *all* changes made to any section of the HydraVision Dialog and closes the Desktop Manager.

**Apply** implements your changes without closing the Desktop Manager.

**Help** opens HydraVision's online help. You can also get context-sensitive on-screen help by moving your mouse over the relevant text for each control.

## HydraVision Properties

### Desktop Management Controls



#### *The Desktop Management Dialog*

The **Desktop Management Dialog** lets you determine the behavior of pop-up dialogs in a multiple monitor environment.

### Dialog control

**Enable dialog repositioning:** Toggles dialog control on and off. When it is checked, you can choose to have dialogs appear on the parent application's monitor. (The parent application is the application that generated the dialog.) If the parent application or associated monitor cannot be located, the dialog defaults to monitor 1. You can also choose to have dialog appear on the monitor in which the cursor is located or to always appear on a specific monitor in the array.

## Window control

**Single monitor windows:** When this box is checked, windows are sized no larger than a single monitor. Windows that are placed on monitor splits are automatically relocated to the monitor on which most of the window appears.

**Max button management:** (HydraVision Max/Restore button in Windows® XP.) Allows you to control the behavior of the **Max/Restore** button. When HydraVision is running, a HydraVision Max/Restore button appears in the upper right corner of your application title bar. Clicking this icon makes the active window maximize in one of three ways:

- **Max to window corners** causes windows to maximize to the monitor(s) that contain the window's upper left and lower right corners
- **Max to full desktop** causes windows to maximize to the entire monitor array
- **Max to current monitor** (available in Windows® 2000 only) causes windows to maximize to the current monitor

**Max child windows:** Keeps windows generated by parent applications from splitting across monitors. (A child window is a window residing within a parent application window.) The ability to keep child windows on a single monitor when maximized is extremely useful for editing multiple documents side by side in a parent application.

The HydraVision application titlebar icon changes from a single square to two smaller squares when a window is in a HydraVision maximized state. Clicking the icon again restores the active window to its default state as a single square.

## General

**Application position memory:** Check this box to “remember” the size and location of application windows when they are closed and reapply those settings when the application is reopened.

**Boot to single monitor:** (Windows® 2000 only) Check this box to enable a single monitor only when the computer starts. All other connected devices will be disabled.

Extended Desktop must be enabled before the computer is restarted.

**Automatically align monitors:** (Windows® XP only) Monitor placement can be manually defined in the Settings Dialog of the Display Properties. However, when the **Automatically align monitors** box is checked, HydraVision will override the user-defined monitor placement setting if the monitors are not evenly aligned.

**Remove HydraVision title bar buttons:** This box removes or restores the ATI buttons placed on the titlebar in installed applications.

**Remove MultiDesk system tray icon:** This box removes or restores the MultiDesk system tray icon.

**ATI Logo:** Click here to access the **About Dialog** which provides software version information and a link to the ATI Technologies website.

**Load/Unload Desktop Manager:** This button starts or stops the HydraVision Desktop Manager tracking program. You should only stop this option if you do not want to use any multiple monitor dialog box controls and window controls or hot keys.

Desktop Manager will not reload automatically when Windows® restarts. You will need to reload Desktop Manager from the Desktop Management dialog box.

**Load/Unload MultiDesk:** This button starts or stops multiple desktop functionality.

MultiDesk will not reload automatically when Windows® restarts. You will need to reload MultiDesk from the Desktop Management dialog box.

**MultiDesk Properties:** This button gives access to all the MultiDesk Properties. Here you enable, disable and name active desktops.

**Individual Application Settings:** This button allows you to specify, enable and disable desktop management settings for individual applications. You can access these settings by clicking on the down arrow of the HydraVision icon in the application title bar or by clicking the **Individual Application Settings** button in the **Desktop Management Dialog**.

## To enable Individual Applications Settings via the Desktop Manager

These settings override the global settings defined in the **Desktop Management Dialog**.

- 1 Click on the **Individual Application Settings** button.
- 2 All open applications will appear in the **Individual settings not enabled Dialog**.
- 3 Drag the desired application to the **Individual settings enabled Dialog**.
- 4 With the application highlighted click **Enable individual application settings**.

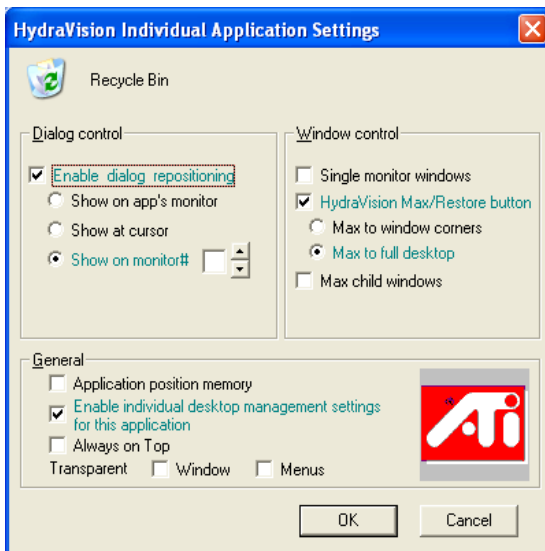
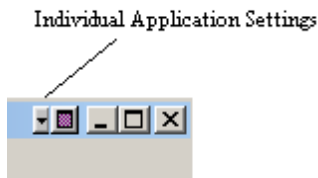
The name of the application will appear in the top of the **HydraVision Individual Application Settings Dialog**.

- 5 Click **Change Settings** to open the **HydraVision Individual Application Settings Dialog**.
- 6 Select the settings you wish to apply to the application and click **OK** in the next two dialogs to apply the changes.

Make certain that **Enable individual desktop management settings for this application** is selected.

## To enable Individual Applications Settings using the HydraVision titlebar button

- 1 Open the **Individual Application Settings Dialog** by clicking the Individual application Settings button:



### *Individual Application Settings Dialog*

Text in **green** reflects Desktop Management settings.

- 2 Click **OK** to apply the settings you selected for your application.

### Exclusions

This feature allows you to *exclude* HydraVision settings from being applied to a specific application or *unload* HydraVision completely when a specific application is started.

#### ***To exclude HydraVision settings:***

- 1** Open HydraVision **Desktop Management**.
- 2** Click **Individual Application Settings** button.
- 3** Click **Exclusions** button.
- 4** Click **Add** button.
- 5** Browse to the application.
- 6** Click **Open** button.

The application will appear in the **Excluded applications Dialog**.

- 7** Click **OK** to apply the change.

#### ***To exclude HydraVision when a specific application is started:***

- 1** Open HydraVision **Desktop Management**.
- 2** Click **Individual Application Settings** button.
- 3** Click **Exclusions** button.
- 4** Click **Add** button.
- 5** Browse to the application.
- 6** Click **Open** button.

The application will appear in the **Excluded applications Dialog**.

- 7** Double click the **application** in the **Excluded applications Dialog**.
- 8** Click **Unload HydraVision** in the **Edit exclusion level Dialog**.
- 9** Click **OK** to apply the setting.

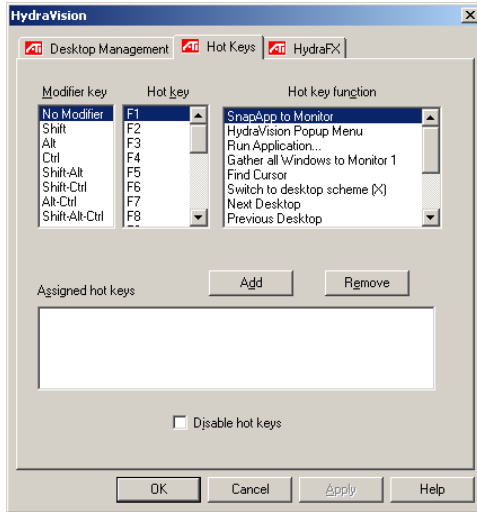
The application will appear in **red text** in the **Excluded applications Dialog**.

HydraVision will not automatically restart when the application closes. You will need to manually restart HydraVision.



## Hot Keys Controls

HydraVision allows you to specify hot key shortcuts for common operations such as starting applications, snapping applications to designated monitors, and changing display resolution.



*The Hot Keys Dialog*

Hot Keys only work if HydraVision is installed and loaded.

## Create/Remove Hot Keys

To create custom hot key sequences, select a **Modifier key** (Shift, Alt, etc.), a **Hot key**, and the **Hot key function** you want this key combination to perform. Click **Add** to enter your new combination in the **Assigned hot keys** list box. Click **Apply** to activate the assigned hot keys.

ATI recommends that a **modifier key** be used with any function key (F1, F2, etc.) assigned as a hot key. This will prevent interference with the function of these keys in individual applications.

To delete a hot key from the **Assigned hot keys** list box, highlight it, click **Remove**, and then click **Apply**.

You can also disable all hot keys listed in the **Assigned hot keys** list box by checking the **Disable hot keys** box near the bottom of the **Hot Keys Dialog**.

## Using Hot Keys

You can use any assigned hot key at any time, from within any application, to change your display.

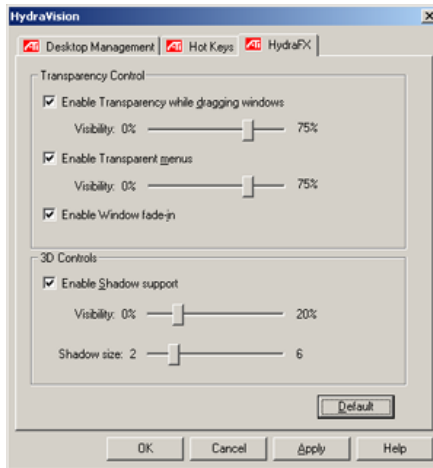
Hot key functions include:

Snap App to Monitor	Moves or “snaps” active dialogs from monitor to monitor for quick placement and viewing of desktop contents.
HydraVision Pop-up Menu	Allows on-the-fly access to HydraVision controls.
Run Application	Starts any application with a hot key.
Gather All Windows to Monitor 1	Finds applications that are hidden or are open and lost on disabled monitors.
Find Cursor	Locates the cursor on a busy or crowded desktop.
Zoom Display In/Out	Causes the desktop resolution to increase or decrease.
Zoom In/Out on Monitor	Causes the resolution of the active monitor to increase or decrease.
Switch to Desktop scheme	Switches from one pre-defined desktop scheme to another
Next Desktop	Moves up to the next active desktop.
Previous Desktop	Moves down to the next active desktop.
Jump to Desktop	Jumps to a predetermined desktop.
Move Application to Desktop	Moves an active application to a predetermined desktop.
Restore and Tile Windows	Tiles all open applications on one display.
Minimize all apps on current monitor	Minimizes all open applications on the current monitor
Maximize app to Monitor	Maximizes minimized applications to a predetermined monitor.

## HydraFX

*HydraFX is only available in Windows® 2000 and Windows® XP.*

HydraVision HydraFX adds visual enhancements to your desktop. You can control the transparency of windows and application drop-down menus and gives a window depth by enabling Shadow support.



## Transparency Control

**Enable Transparency while dragging windows:** Check this box to enable the Visibility slider. Use the slider to set the degree of Visibility a window has when being dragged across the display.

**Enable Transparent menus:** Check this box to enable the Visibility slider. Use the slider to set the degree of visibility application drop-down menus has.

**Enable Window fade-in:** Check this box to cause an application window to slowly open or 'fade-in' to your desktop.

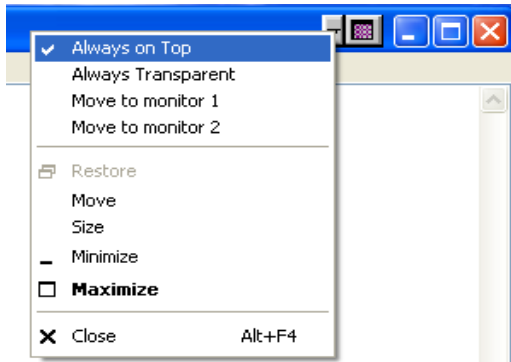
### 3D Controls

**Enable Shadow Support:** Check this box to enable the Shadow support sliders. The Visibility slider sets the degree of visibility of the shadow. The Shadow size slider sets the size of the shadow added to an application dialog.

### Always On Top

This feature allows you to keep a specific application on top of other open applications, even if another application is opened or moved on your desktop.

- To enable **Always on Top** right-click the titlebar of the required application and click **Always on Top** in the pop-up menu.



This feature remains enabled with the application even when it is closed. The next time the application is started it will appear on top of all open applications.

- To disable **Always on Top** right-click the application's titlebar and click **Always on Top**.

If a second instance of the same application is opened when **Always on Top** has been enabled, the second instance will appear on top of the first. You will be able to switch between the two instances as though **Always on Top** was disabled. However, any other opened application will appear underneath the application that has **Always on Top** enabled.

## Always Transparent

This feature applies a degree of transparency preset in the **HydraFX Dialog** for a specific application. This setting is applied regardless of how **Transparency** is configured in the HydraFX Dialog. However, you can change the degree of transparency in the **HydraFX Dialog**.

- Right-click the titlebar of the application you wish to apply this setting and click **Always Transparent** in the pop-up menu.

This feature remains enabled with the application even when it is closed. The next time the application is started it will have the same transparency settings as it did when it was closed.

- To disable **Always Transparent** right-click the application's titlebar and click **Always Transparent**.

If a second instance of the same application is opened when Always Transparent has been enabled, the second instance will have the same transparency settings applied to it. Disabling Always Transparent of one instance will disable it in all other instances.

## Move to monitor

This feature allows you to move an application dialog to a specific monitor. To do so:

- 1** Right-click the application titlebar.
- 2** Select the preferred monitor from the drop-down menu.

## Restore to monitor

This feature allows you to specify which monitor a minimized application will open on. To do so:

- 1** Right-click a minimized application.
- 2** Select the preferred monitor from the pop-up menu.

## **Internet Explorer Feature**

In a multi-monitor environment, HydraVision extends the capabilities of Internet Explorer. By right-clicking on a hyperlink, you can choose which monitor the new page will open on. To do so:

- 1** Open Internet Explorer.
- 2** Surf to your favorite website.
- 3** Right-click a hyperlink.
- 4** Select the preferred monitor from the drop-down menu.

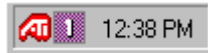
Double right-click a hyperlink to automatically open it in a new window on the original display.

## MultiDesk

MultiDesk is a feature of HydraVision that supports multiple desktops. With MultiDesk, one active desktop will always be visible, while up to eight active desktops may reside in the background. When MultiDesk is running, the MultiDesk icon in the system tray displays the number assigned to the current desktop.

MultiDesk is installed with HydraVision. However, multiple desktop support and HydraVision can be loaded/unloaded and operated independently of each other.

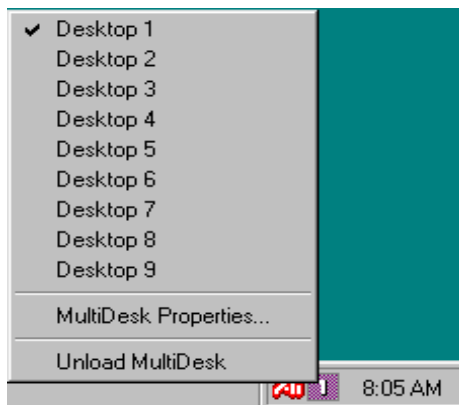
MultiDesk Icon



### *MultiDesk System Tray Icon*

Right-click on the MultiDesk icon to switch between active desktops and access the MultiDesk settings. In addition to accessing active desktops from the system tray, you can also access active desktops with a **Hot key** shortcut. See [Create/Remove Hot Keys](#) on page 13.

Hot Keys only work if HydraVision is installed and running.



### *MultiDesk Pop-Up Menu*

To switch to another defined desktop, select the appropriate desktop number from the pop-up menu. To enable, disable and name active desktops, select **MultiDesk Properties** from the pop-up menu. MultiDesk functionality can be removed by selecting **Unload MultiDesk** from the pop-up menu.

## MultiDesk Properties

**MultiDesk Properties** allows you to control up to nine desktops. Right-click a Desktop tab to set it Active, Inactive, or Disabled. Inactive desktops MAY contain open applications; however, they are temporarily disabled. Disabled desktops cannot contain any applications. If an Active or Inactive desktop that contain applications is disabled, the applications will be automatically moved to an Active desktop.

You can also give a desktop a unique name. Double-click the desired desktop tab. The tab will turn grey and the cursor will blink. Simply type in the new name. When you have finished renaming the desktop click on the tab to save the change.

**Keep on all desks** allows you to have a selected application visible on all desktops.

**Change desktops with mousewheel** allows you to scroll through your active desktops using the mousewheel.

MultiDesk functionality can be removed by selecting **Unload MultiDesk** from the pop-up menu of the ATI Icon or the Desktop Manager.

MultiDesk will not reload automatically when Windows® restarts. You will need to reload MultiDesk from the Desktop Manager.

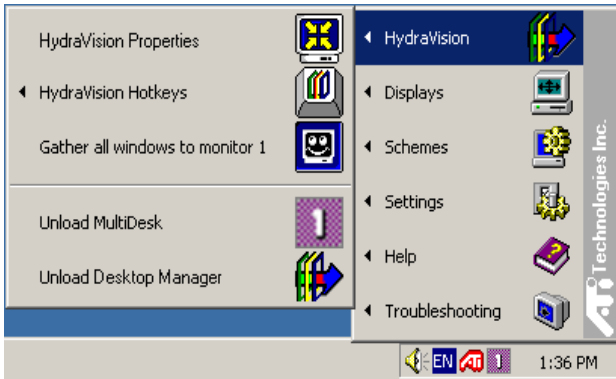


# HydraVision for Windows® 98SE/Windows® Me

HydraVision installation creates a Windows® program group for HydraVision display management software.

HydraVision and the Desktop Manager are activated whenever Windows® starts. Installing Hydra Vision adds menu options to the ATI Icon.

Click on the ATI icon to access the application's features and help, or to unload the HydraVision Desktop Manager.



*Accessing HydraVision Desktop Manager*

The HydraVision Desktop Manager allows you to modify your display options. You can access the **Desktop Management** and **Hot Keys Dialog** by clicking on the appropriate tab in the Desktop Manager.

Along the bottom of each HydraVision Dialog are four buttons: **OK**, **Cancel**, **Apply** and **Help**.

**OK** implements the changes you've made in the HydraVision Dialog and exits the Desktop Manager. Changes take effect immediately unless you see a message prompting you to restart your computer.

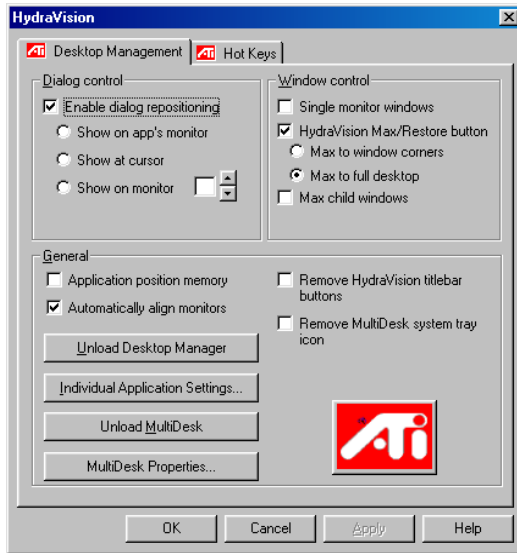
**Cancel** discards *all* changes made to any section of the HydraVision Dialog and closes the Desktop Manager.

**Apply** implements your changes without closing the Desktop Manager.

**Help** opens HydraVision's online help. You can also get context-sensitive on-screen help by moving your mouse over the relevant text for each control.

## HydraVision Properties

### Desktop Management Controls



#### *The Desktop Management Dialog*

The **Desktop Management Dialog** lets you determine the behavior of pop-up dialogs in a multiple monitor environment.

### Dialog control

**Enable dialog repositioning:** Toggles dialog control on and off. When it is checked, you can choose to have dialogs appear on the parent application's monitor. (The parent application is the application that generated the dialog.) If the parent application or associated monitor cannot be located, the dialog defaults to monitor 1. You can also choose to have dialogs appear on the monitor in which the cursor is located or to always appear on a specific monitor in the array.

## Window control

**Single monitor windows:** When this box is checked, windows are sized no larger than a single monitor. Windows that are placed on monitor splits are automatically relocated to the monitor on which most of the window appears.

**HydraVision Max/Restore button management:** Allows you to control the behavior of the Windows® **Maximize** button. When HydraVision is running, a **HydraVision Max/Restore button** appears in the upper right corner of your application title bar. Clicking this icon makes the active window maximize in one of two ways:

- **Max to window corners** causes windows to maximize to the monitor(s) that contain the window's upper left and lower right corners.
- **Max to full desktop** causes windows to maximize to the entire monitor array.

**Max child windows:** Keeps windows generated by parent applications from splitting across monitors. (A child window is a window residing within a parent application window.) The ability to keep child windows on a single monitor when maximized is extremely useful for editing multiple documents side by side in a parent application.

The HydraVision application titlebar icon changes from a single square to two smaller squares when a window is in a HydraVision maximized state. Clicking the icon again restores the active window to its default state as a single square.

## General

**Application position memory:** Check this box to “remember” the size and location of application dialogs when they are closed and reapply those settings when the application is reopened.

**Automatically align monitors:** You can manually define monitor placement from the **Settings Dialog** in the **Display Properties Dialog**. When **Automatically align monitors** is checked, HydraVision will override user-defined monitor placement if the monitors are not evenly aligned.

This control will work only if all monitors are running at the same resolution and your desktop is configured as a rectangle (monitors side-by-side).

**Remove HydraVision titlebar buttons:** This box removes or restores the buttons placed on the titlebar in installed applications.

**Remove MultiDesk system tray icon:** This box removes or restores the MultiDesk system tray icon.

**ATI Logo:** Click here to access the **About Dialog** which provides software version information and a link to the ATI Technologies website.

**Load/Unload Desktop Manager:** This button starts or stops the HydraVision Desktop Manager tracking program. Unloading the Desktop Manager returns display settings to Windows® 98SE and Windows® Me defaults. You should only select this option if you do not want to use any multiple monitor dialog controls and window controls or hot keys.

Desktop Manager will not reload automatically when Windows® restarts. You will need to restart Desktop Manager from the Desktop Management Dialog.

**Load/Unload MultiDesk:** This button starts or stops multiple desktop functionality.

MultiDesk will not reload automatically when Windows® restarts. You will need to restart MultiDesk from the Desktop Management Dialog.

**MultiDesk Properties:** This button gives access to all the MultiDesk Properties. Here you can enable, disable and name active desktops.

**Individual Application Settings:** This button allows you to specify, enable and disable desktop management settings for individual applications. You can access these settings by clicking on the down arrow of the HydraVision icon in the application title bar or by clicking the **Individual Application Settings** button in the **Desktop Management Dialog**.

## To enable Individual Applications Settings via the Desktop Manager

These settings override the global settings defined in the **Desktop Management Dialog**.

- 1 Click on the **Individual Application Settings** button.
- 2 All open applications will appear in the **Individual settings not enabled Dialog**.
- 3 **Drag** the desired application to the **Individual settings enabled Dialog**.
- 4 With the application highlighted click **Enable individual application settings**.

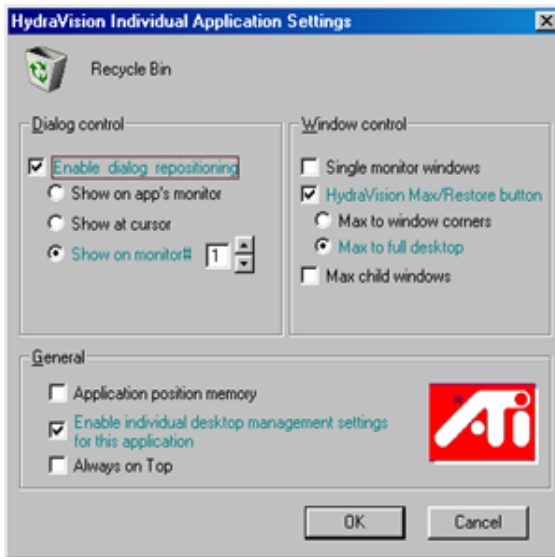
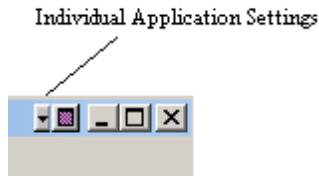
The name of the application will appear in the top of the **HydraVision Individual Application Settings Dialog**.

- 5 Click **Change Settings** to open the **HydraVision Individual Application Settings Dialog**.
- 6 Select the settings you wish to apply to the application and click **OK** in the next two dialogs to apply the changes.

Make certain that **Enable individual desktop management settings for this application** is selected.

## To enable Individual Applications Settings using the HydraVision titlebar button

- 1 Open the **Individual Application Settings Dialog** by clicking the Individual application Setting button.



### *Individual Application Settings Dialog*

Text in **green** reflects Desktop Management settings.

- 2 Click OK to apply the settings you selected for your application.

## Exclusions

This feature allows you to *exclude* HydraVision settings from being applied to a specific application or *unload* HydraVision completely when a specific application is started.

### ***To exclude HydraVision settings:***

- 1** Open HydraVision **Desktop Management**.
- 2** Click **Individual Application Settings** button.
- 3** Click **Exclusions** button.
- 4** Click **Add** button.
- 5** Browse to the application.
- 6** Click **Open** button.

The application will appear in the **Excluded applications Dialog**.

- 7** Click **OK** to apply the change.

### ***To exclude HydraVision when a specific application is started:***

- 1** Open HydraVision **Desktop Management**.
- 2** Click **Individual Application Settings** button.
- 3** Click **Exclusions** button.
- 4** Click **Add** button.
- 5** Browse to the application.
- 6** Click **Open** button.

The application will appear in the **Excluded applications Dialog**.

- 7** Double click the **application** in the **Excluded applications Dialog**.
- 8** Click **Unload HydraVision** in the **Edit exclusion level Dialog**.
- 9** Click **OK** to apply the setting.

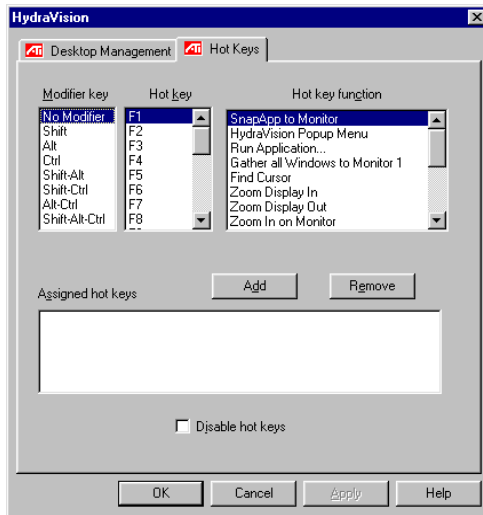
The application will appear in **red text** in the **Excluded applications Dialog**.

HydraVision will not automatically restart when the application closes. You will need to manually restart HydraVision.



## Hot Keys Controls

HydraVision allows you to specify hot key shortcuts for common operations such as starting applications, snapping applications to designated monitors, and changing display resolution.



*The Hot Keys Dialog*

Hot Keys only work if HydraVision is installed and loaded.

### Create/Remove Hot Keys

To create custom hot key sequences, select a **Modifier key** (Shift, Alt, etc.), a **Hot key**, and the **Hot key function** you want this key combination to perform. Click **Add** to enter your new combination in the **Assigned hot keys** list box. Click **Apply** to activate assigned hot keys.

ATI recommends that a modifier key be used with any function key (F1, F2, etc.) assigned as a hot key. This will prevent interference with the function of these keys in individual applications.

To delete a hot key from the **Assigned hot keys** list box, highlight it, click **Remove**, and then click **Apply**.

You can also disable all hot keys listed in the **Assigned hot keys** list box by checking the **Disable hot keys** box near the bottom of the **Hot Keys Dialog**.

## Using Hot Keys

You can use any assigned hot key at any time, from within any application, to change your display.

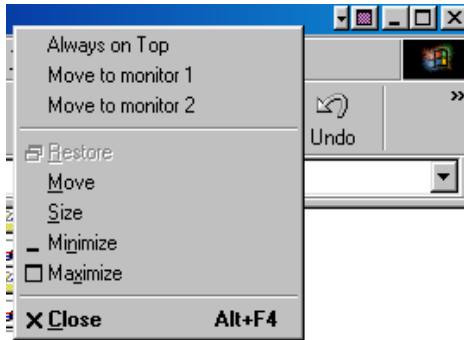
Hot key functions include:

Snap App to Monitor	Moves or “snaps” active dialogs from monitor to monitor for quick placement and viewing of desktop contents.
HydraVision Pop-up Menu	Allows on-the-fly access to HydraVision controls.
Run Application	Starts any application with a hot key.
Gather All Windows to Monitor 1	Finds applications that are hidden or are open and lost on disabled monitors.
Find Cursor	Locates the cursor on a busy or crowded desktop.
Zoom Display In/Out	Causes the desktop resolution to increase or decrease.
Zoom In/Out on Monitor	Causes the resolution of the active monitor to increase or decrease.
Switch to desktop scheme	Switches from one pre-defined desktop scheme to another.
Next Desktop	Moves up to the next active desktop.
Previous Desktop	Moves down to the next active desktop.
Jump to Desktop	Jumps to a predetermined desktop.
Move Application to Desktop	Moves an active application to a predetermined desktop.
Restore and Tile Windows	Tiles all open applications on one display.
Minimize all apps on current monitor	Minimizes all open applications on the current monitor
Maximize app to Monitor	Maximizes minimized applications to a predetermined monitor.

## Always On Top

This feature allows you to keep a specific application on top of other open applications, even if another application is opened or moved on your desktop.

- To enable **Always on Top** right-click the titlebar of the required application and click **Always on Top** in the pop-up menu.



This feature remains enabled with the application even when it is closed. The next time the application is started it will appear on top of all open applications.

- To disable **Always on Top** right-click the application's titlebar and click **Always on Top**.

If a second instance of the same application is opened when **Always on Top** has been enabled, the second instance will appear on top of the first. You will be able to switch between the two instances as though **Always on Top** was disabled. However, any other opened application will appear underneath the application that has **Always on Top** enabled.

## Move to Monitor

This feature allows you to move an application dialog to a specific monitor. To do so:

- 1** Right-click the application titlebar.
- 2** Select the preferred monitor from the drop-down menu.

## Restore to Monitor

This feature allows you to specify which monitor a minimized application will open on. To do so:

- 1** Right-click a minimized application.
- 2** Select the preferred monitor from the pop-up menu.

## Internet Explorer Feature

In a multi-monitor environment, HydraVision extends the capabilities of Internet Explorer. By right-clicking on a hyperlink, you can choose which monitor the new page will open on. To do so:

- 1** Open Internet Explorer.
- 2** Surf to your favorite website.
- 3** Right-click a hyperlink.
- 4** Select the preferred monitor from the drop-down menu.

Double right-click a hyperlink to automatically open it in a new window on the originating display.

## MultiDesk

HydraVision software supports multiple desktops. With MultiDesk, one active desktop will always be visible, while up to eight active desktops can reside in the background. When MultiDesk is running, the MultiDesk icon in the system tray displays the number assigned to the current desktop.

MultiDesk is installed with HydraVision. However, multiple desktop support and HydraVision can be loaded/unloaded and operated independently of each other.

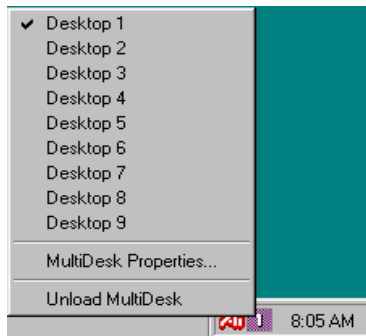
MultiDesk Icon



### ***MultiDesk System Tray Icon***

Right-click on the MultiDesk icon to access MultiDesk controls. In addition to accessing active desktops from the system tray, you can also access active desktops with a **Hot key** shortcut.

Hot Keys only work if HydraVision is installed and loaded.



### ***MultiDesk Pop-Up Menu***

To switch to another defined desktop, select the appropriate desktop number from the pop-up menu. To enable, disable and name active desktops, select **MultiDesk Properties** from the pop-up menu. To arrange applications within active desktops, or to enable specific applications on all desktops, select **Arrange MultiDesk** from the pop-up menu.

## MultiDesk Properties

**MultiDesk Properties** allows you to control up to nine desktops. Right-click a Desktop tab to set it Active, Inactive, or Disabled. Inactive desktops MAY contain open applications; however, they are temporarily disabled. Disabled desktops cannot contain any applications. If an Active or Inactive desktop that contain applications is disabled, the application will be automatically moved to an Active desktop.

You can also give a desktop a unique name. Double-click the desired desktop tab. The tab will turn grey and a blinking cursor will appear. Simply type in the new name. When you have renamed the desktop click on the tab to save the change.

**Keep on all desks** allows you to have a selected application visible on all desktops.

**Change desktops with mousewheel** allows you to scroll through your active desktops using the mousewheel.

MultiDesk functionality can be removed by selecting **Unload MultiDesk** from the pop-up menu of the ATI Icon or the Desktop Manager.

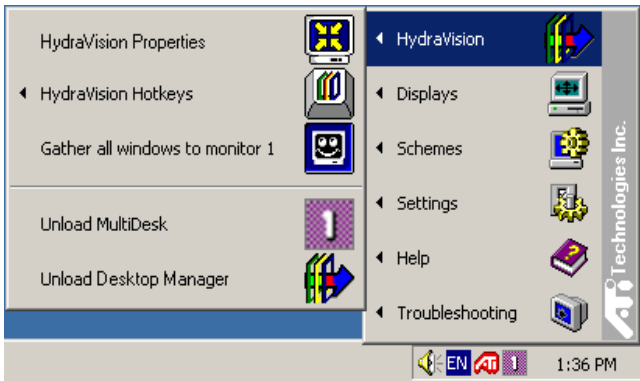
MultiDesk will not reload automatically when Windows® restarts. You will need to reload MultiDesk from the Desktop Manager.

# HydraVision for Windows® NT4.0

HydraVision installation creates a Windows® program group for HydraVision display management software.

HydraVision and the Desktop Manager are activated whenever Windows® starts. Installing Hydra Vision adds menu options to the ATI Icon.

Click on the ATI icon to access the application's features and help, or to unload the HydraVision Desktop Manager.



*Accessing HydraVision Desktop Manager*

The HydraVision Desktop Manager allows you to modify your display options. You can access the **Desktop Management** and **Hot Keys Dialog** by clicking on the appropriate tab in the Desktop Manager.

Along the bottom of each HydraVision Dialog are four buttons: **OK**, **Cancel**, **Apply** and **Help**.

**OK** implements the changes you've made in the HydraVision Dialog and exits the Desktop Manager. Changes take effect immediately unless you see a message prompting you to restart your computer.

**Cancel** discards *all* changes made to any section of the HydraVision Dialog and closes the Desktop Manager.

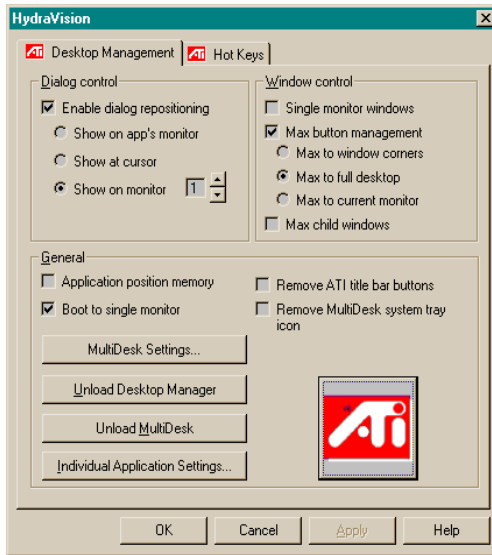
**Apply** implements your changes without closing the Desktop Manager.

**Help** opens HydraVision's online help. You can also get context-sensitive on-screen help by moving your mouse over the relevant text for each control.



## HydraVision Properties

### Desktop Management Controls



#### *The Desktop Management Dialog*

The **Desktop Management Dialog** lets you determine the behavior of pop-up windows and dialogs in a multiple monitor environment.

### Dialog control

**Enable dialog repositioning:** Toggles dialog control on and off. When it is checked, you can choose to have dialogs appear on the parent application's monitor. (The parent application is the application that generated the dialog.) If the parent application or associated monitor cannot be located, the dialog defaults to monitor 1. You can also choose to have dialogs appear on the monitor in which the cursor is located or to always appear on a specific monitor in the array.

## Window control

**Single monitor windows:** When this box is checked, windows are sized no larger than a single monitor. Windows that are placed on monitor splits are automatically relocated to the monitor on which most of the window appears.

**Max button management:** Allows you to control the behavior of the Windows® **Maximize** button. When HydraVision is running, a Max/Restore button appears in the upper right corner of your application title bars. Clicking this button makes the active window maximize in one of three ways:

- **Max to window corners** causes windows to maximize to the monitor(s) that contain the window's upper left and lower right corners.
- **Max to full desktop** causes windows to maximize to the entire monitor array.
- **Max to current monitor** causes windows to maximize to the current monitor.

**Max child windows:** Keeps windows generated by parent applications from splitting across monitors (A child window is a window residing within a parent application window.) The ability to keep child windows on a single monitor when maximized is extremely useful for editing multiple documents side by side in a parent application.

The HydraVision application titlebar icon changes from a single square to two smaller squares when a window is in a HydraVision maximized state. Clicking the icon again restores the active window to its default state as a single square.

## General

**Application position memory:** Check this box to “remember” the size and location of application windows when they are closed and reapply those settings when the application is reopened.

**Boot to single monitor:** Check this box to enable a single monitor only when the computer starts. All other connected devices will be disabled.

Extended Desktop must be enabled before the computer is restarted.

**Remove HydraVision title bar buttons:** This box removes or restores the ATI buttons placed on the title bar in installed applications.

**Remove MultiDesk system tray icon:** This box removes or restores the MultiDesk system tray icon.

**ATI Logo:** Click here to access the **About Dialog** which provides software version information and a link to the ATI Technologies website.

**Load/Unload Desktop Manager:** This button restores or removes the HydraVision Desktop Manager tracking program. You should only select this option if you do not want to use any multiple monitor dialog controls and window controls or hot keys.

Desktop Manager will not reload automatically when Windows® restarts. You will need to reload Desktop Manager from the Desktop Management Dialog.

**Load/Unload MultiDesk:** This button restores or removes multiple desktop functionality.

MultiDesk will not reload automatically when Windows® restarts. You will need to reload MultiDesk from the Desktop Management Dialog.

**MultiDesk Properties:** This button gives access to all the MultiDesk Properties. Here you enable, disable and name active desktops.

**Individual Application Settings:** This button allows you to specify, enable and disable desktop management settings for individual applications.

## To enable Individual Applications Settings via the Desktop Manager

These settings override the global settings defined in the **Desktop Management Dialog**.

- 1** Click on the **Individual Application Settings** button.
- 2** All open applications will appear in the **Individual settings not enabled Dialog**.
- 3** Drag the desired application to the **Individual settings enabled Dialog**.
- 4** With the application highlighted click **Enable individual application** settings.

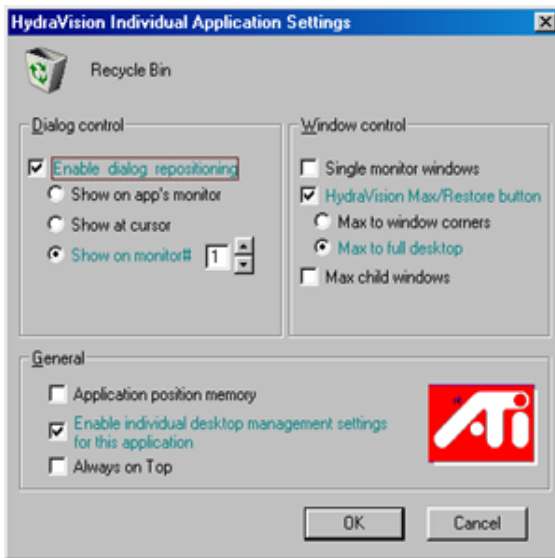
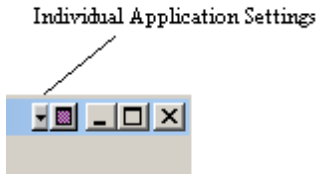
The name of the application will appear in the top of the **HydraVision Individual Application Settings Dialog**.

- 5** Click **Change Settings** to open the **HydraVision Individual Application Settings Dialog**.
- 6** Select the settings you wish to apply to the application and click **OK** in the next two dialogs to apply the changes.

Make certain that **Enable individual desktop management settings for this application** is selected.

## To enable Individual Applications Settings using the HydraVision titlebar button

- 1 Open the Individual Application Settings Dialog by clicking the Individual application Setting button.



### *Individual Application Settings Dialog*

Text in **green** reflects Desktop Management settings.

- 2 Click OK to apply the settings you selected for your application.

## Exclusions

This feature allows you to *exclude* HydraVision settings from being applied to a specific application or *unload* HydraVision completely when a specific application is started.

### ***To exclude HydraVision settings:***

- 1** Open HydraVision **Desktop Management**.
- 2** Click **Individual Application Settings** button.
- 3** Click **Exclusions** button.
- 4** Click **Add** button.
- 5** Browse to the application.
- 6** Click **Open** button.

The application will appear in the **Excluded applications Dialog**.

- 7** Click **OK** to apply the change.

### ***To exclude HydraVision when a specific application is started:***

- 1** Open HydraVision **Desktop Management**.
- 2** Click **Individual Application Settings** button.
- 3** Click **Exclusions** button.
- 4** Click **Add** button.
- 5** Browse to the application.
- 6** Click **Open** button.

The application will appear in the **Excluded applications Dialog**.

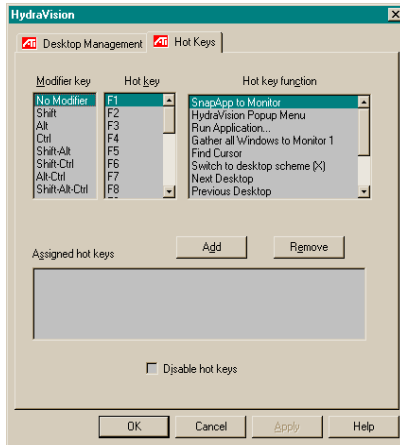
- 7** Double click the **application** in the **Excluded applications Dialog**.
- 8** Click **Unload HydraVision** in the **Edit exclusion level Dialog**.
- 9** Click **OK** to apply the setting.

The application will appear in **red text** in the **Excluded applications Dialog**.

HydraVision will not automatically restart when the application closes. You will need to manually restart HydraVision.

## Hot Keys Controls

HydraVision allows you to specify hot key shortcuts for common operations such as starting applications, snapping applications to designated monitors, and changing display resolution.



### *The Hot Keys Dialog*

Hot Keys only work if HydraVision is installed and loaded.

## Create/Remove Hot Keys

To create custom hot key sequences, select a **Modifier key** (Shift, Alt, etc.), a **Hot key**, and the **Hot key function** you want this key combination to perform. Click **Add** to enter your new combination in the **Assigned hot keys** list box. Click **Apply** to activate assigned hot keys.

ATI recommends that a modifier key be used with any function key (F1, F2, etc.) assigned as a hot key. This will prevent interference with the function of these keys in individual applications.

To delete a hot key from the **Assigned hot keys** list box, highlight it, click **Remove**, and then click **Apply**.

You can also disable all hot keys listed in the **Assigned hot keys** list box by checking the **Disable hot keys** box near the bottom of the **Hot Keys Dialog**.

## Using Hot Keys

You can use any assigned hot key at any time, from within any application, to change your display.

Hot key functions include:

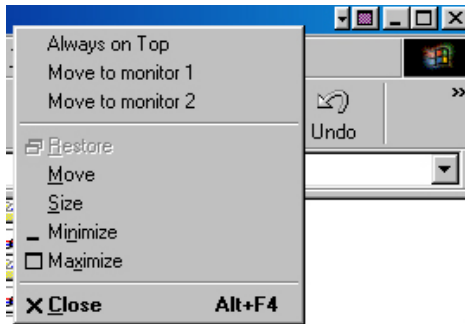
Snap App to Monitor	Moves or “snaps” active dialogs from monitor to monitor for quick placement and viewing of desktop contents.
HydraVision Pop-up Menu	Allows on-the-fly access to HydraVision controls.
Run Application	Starts any application with a hot key.
Gather All Windows to Monitor 1	Finds applications that are hidden or are open and lost on disabled monitors.
Find Cursor	Locates the cursor on a busy or crowded desktop.
Switch to desktop scheme (X)	Switches from one pre-defined desktop scheme to another.
Next Desktop	Moves up to the next active desktop.
Previous Desktop	Moves down to the next active desktop.
Jump to Desktop	Jumps to a predetermined desktop.
Move Application to Desktop	Moves an active application to a predetermined desktop.
Restore and Tile Windows	Tiles all open applications on one display.
Minimize all apps on current monitor	Minimizes all open applications on the current monitor
Maximize app to Monitor	Maximizes minimized applications to a predetermined monitor.



## Always On Top

This feature allows you to keep a specific application on top of other open applications, even if another application is opened or moved on your desktop.

- To enable **Always on Top** Right-click the titlebar of the required application and click **Always on Top** in the pop-up menu.



This feature remains enabled with the application even when it is closed. The next time the application is started it will appear on top of all other open applications.

- To disable **Always on Top** right-click the application's titlebar and click **Always on Top**.

If a second instance of the same application is opened when Always on Top has been enabled, the second instance will appear on top of the first. You will be able to switch between the two instances as though Always on Top was disabled. However, any other opened application will appear underneath the application that has Always on Top enabled.

## Move to monitor

This feature allows you to move an application dialog to a specific monitor. To do so:

- 1 Right-click the application titlebar.
- 2 Select the preferred monitor from the drop-down menu.

## Restore to monitor

This feature allows you to specify which monitor a minimized application will open on. To do so:

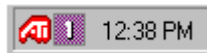
- 1** Right-click a minimized application.
- 2** Select the preferred monitor from the pop-up menu.

## MultiDesk

HydraVision software supports multiple desktops. With MultiDesk, one active desktop will always be visible, while up to eight active desktops can reside in the background. When MultiDesk is running, the MultiDesk icon in the system tray displays the number assigned to the current desktop.

MultiDesk is installed with HydraVision. However, multiple desktop support and HydraVision can be loaded/unloaded and operated independently of each other.

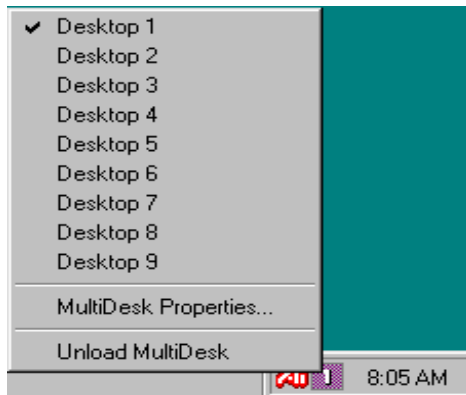
MultiDesk Icon



### *MultiDesk System Tray Icon*

Right-click on the MultiDesk icon to access MultiDesk controls. In addition to accessing active desktops from the system tray, you can also access active desktops with a **Hot key** shortcut.

Hot Keys only work if HydraVision is installed and loaded.



### *MultiDesk Pop-Up Menu*

To switch to another defined desktop, select the appropriate desktop number from the pop-up menu. To enable, disable and name active desktops, select **MultiDesk Properties** from the pop-up menu. MultiDesk functionality can be removed by selecting **Unload MultiDesk** from the pop-up menu.

## MultiDesk Properties

**MultiDesk Properties** allows you to control up to nine desktops. Right-click a Desktop tab to set it Active, Inactive, or Disabled. Inactive desktops MAY contain applications; however, they are temporarily disabled. Disabled desktops cannot contain any applications. If an Active or Inactive desktop that contain applications is disabled, the applications will be automatically moved to an Active desktop.

You can also give a desktop a unique name. Double-click the desired desktop tab. The tab will turn grey and the cursor will blink. Simply type in the new name. When you have finished renaming the desktop click on the tab to save the change.

**Keep on all desks** allows you to have a selected application visible on all desktops.

**Change desktops with mousewheel** allows you to scroll through your active desktops using the mousewheel.

MultiDesk functionality can be removed by selecting **Unload ATI Icon** or the Desktop Manager.

MultiDesk will not reload automatically when Windows® restarts. You will need to reload MultiDesk from the Desktop Manager.