

The logo features the AMD logo (a stylized 'A' with a triangle) to the left of the text 'AMD' in a bold, sans-serif font. Below 'AMD' is the text 'RADEON PRO' in a smaller, spaced-out, all-caps sans-serif font. The largest and most prominent text is 'Software' in a large, white, sans-serif font. The entire logo is set against a dark blue background with a pattern of stylized, overlapping leaf-like shapes.

AMD  
RADEON PRO  
Software

# Driver Options in AMD Radeon Pro Settings

User Guide

This guide will show you how to switch between Professional Mode and Gaming Mode when using Radeon™ Pro Software.

## DISCLAIMER

The information contained herein is for informational purposes only and is subject to change without notice. While every precaution has been taken in the preparation of this document, it may contain technical inaccuracies, omissions, and typographical errors, and AMD is under no obligation to update or otherwise correct this information. Advanced Micro Devices, Inc. makes no representations or warranties with respect to the accuracy or completeness of the contents of this document, and assumes no liability of any kind, including the implied warranties of non-infringement, merchantability or fitness for particular purposes, with respect to the operation or use of AMD hardware, software or other products described herein. No license, including implied or arising by estoppel, to any intellectual property rights is granted by this document. Terms and limitations applicable to the purchase or use of AMD's products are as set forth in a signed agreement between the parties or in AMD's Standard Terms and Conditions of Sale.

©2018 Advanced Micro Devices, Inc. All rights reserved. AMD, the AMD arrow, FirePro, Radeon Pro, Radeon ProRender and combinations thereof are trademarks of Advanced Micro Devices, Inc. in the United States and/or other jurisdictions. Other names are for informational purposes only and may be trademarks of their respective owners.

# Table of Contents

<b>Important Notices.....</b>	<b>2</b>
<b>Supported Platforms.....</b>	<b>3</b>
Operating System.....	3
Hardware.....	3
<b>Install Professional Driver .....</b>	<b>4</b>
<b>Install Gaming Driver.....</b>	<b>8</b>
<b>Switching to Gaming Mode .....</b>	<b>13</b>
<b>Install and Switch to Gaming Mode .....</b>	<b>15</b>
<b>Switching back to Professional Mode.....</b>	<b>16</b>

# OVERVIEW

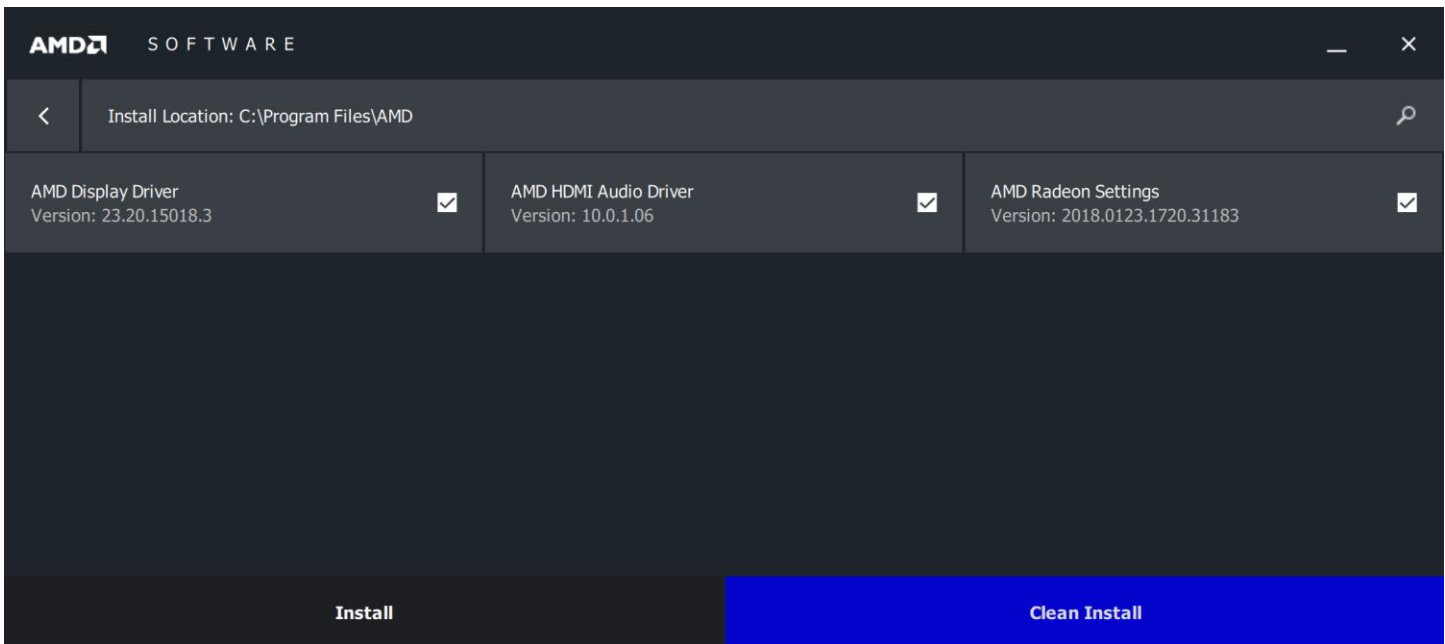
The “**Driver Options**” feature will allow your professional workstation system to switch between professional mode and gaming mode. Your system can support up to two gaming drivers (Radeon™ Software for Radeon™ Pro drivers) and one professional driver (Radeon Pro Software) with a Microsoft Windows® 10 system configuration.

# Important Notices

- It is advisable to always reboot the system after installing a new driver prior to a driver switch.
- **Driver Options** must be installed using the **Custom Install** option.
  - It is advisable to use **Clean Install** to remove any existing drivers before installing the professional driver.



**Note:** **Clean Install** will remove any gaming and professional driver(s) on your workstation.



- This feature does not work in multi-GPU configurations:
  - If you have an existing compatible graphics card in your system with **Driver Options** installed, adding another compatible graphics card will disable the **Driver Options** feature.
  - This feature is not compatible with Radeon™ Pro Duo ("Polaris").
- **Driver Options** is only available when using Radeon Pro Software. If you download Radeon Software when using Radeon™ Vega Frontier Edition, **Driver Options** will not be available.
- **Driver Options** is only available when using Radeon Pro Software for desktop workstation platforms. It is not available for mobile workstations or Linux® platforms.

# Supported Platforms

## Operating System


- Microsoft Windows® 10 (64-bit)

## Hardware

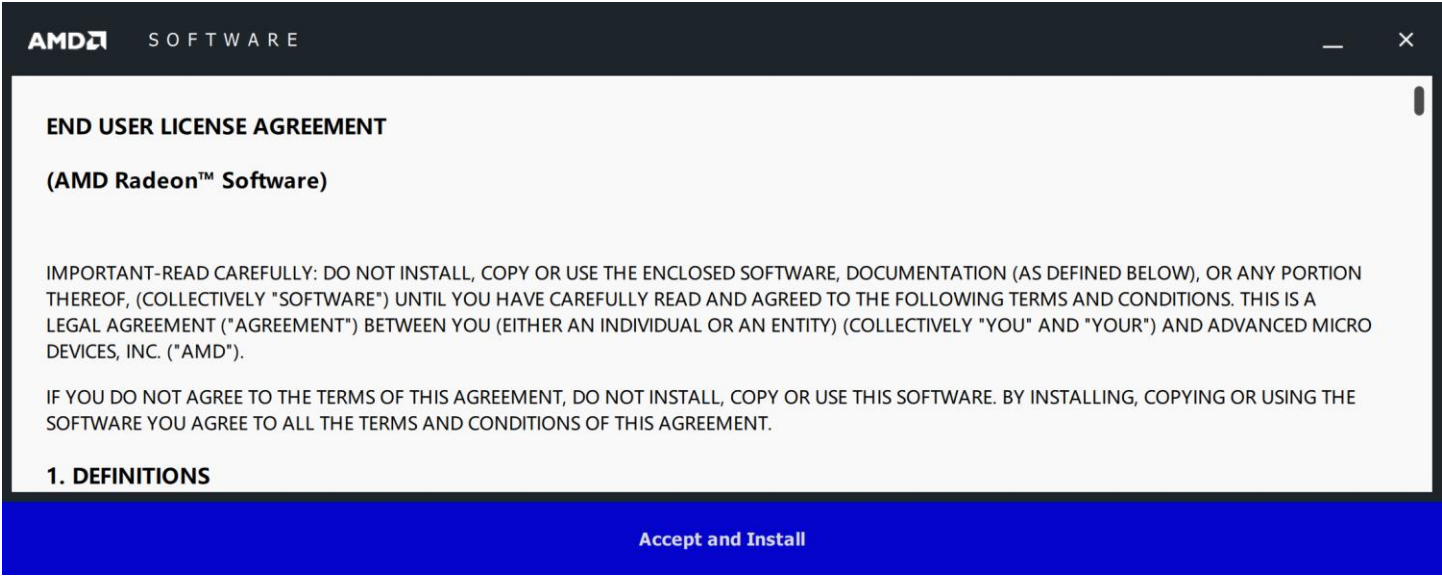
**Driver Options** for Radeon Pro Software is compatible with the following professional graphics products.

<b>Radeon™ Product Family Compatibility</b>
<b>Radeon™ Pro WX series</b>  Radeon™ Pro WX 9100 Radeon™ Pro WX 7100 Radeon™ Pro WX 5100 Radeon™ Pro WX 4100 Radeon™ Pro WX 3100 Radeon™ Pro WX 2100
<b>Radeon™ Vega Frontier Edition</b>

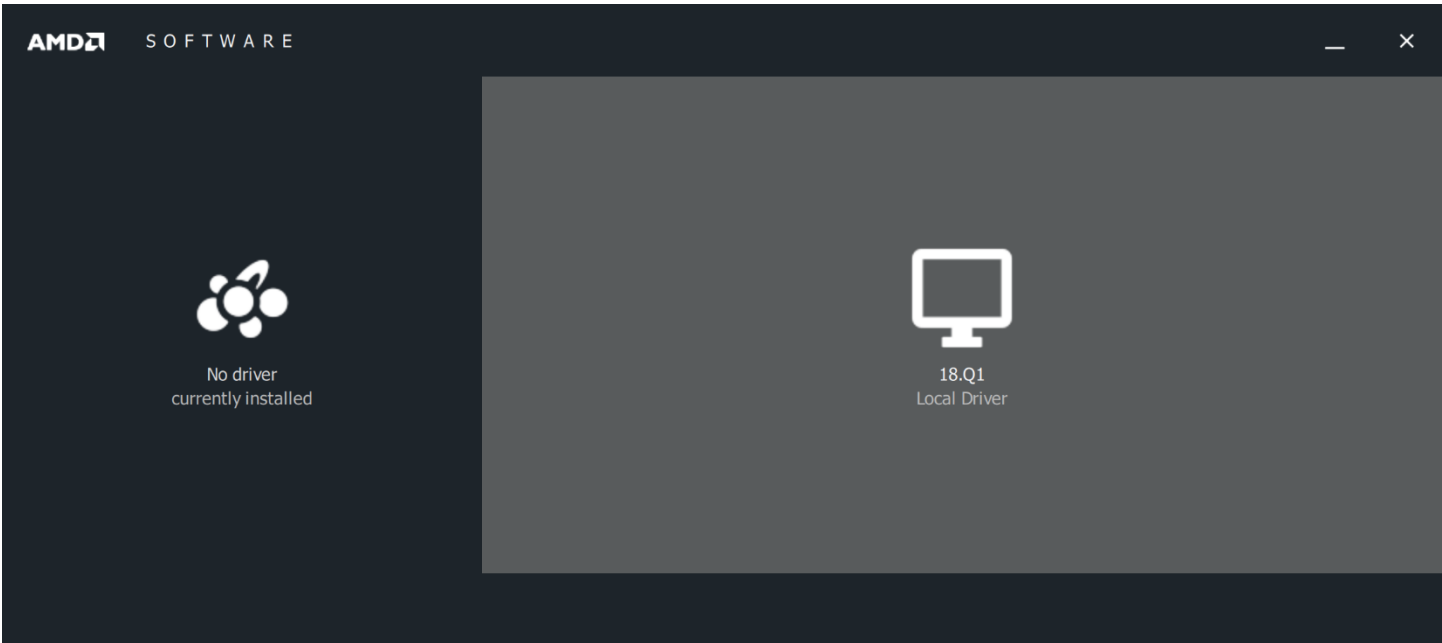
# Install Professional Driver

 **Note:** It is advised to remove any graphics driver before starting this installation.

Download the driver and begin the install. Accept the **End User License Agreement**.



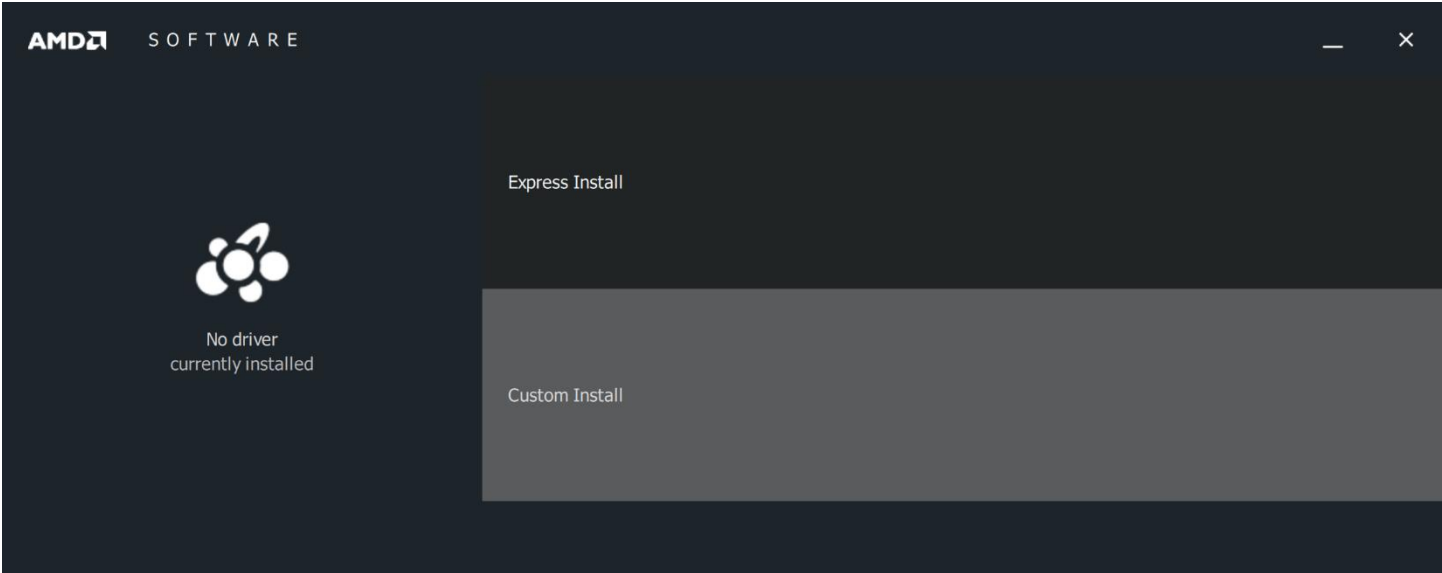
Click on the right-hand side to download the professional driver.



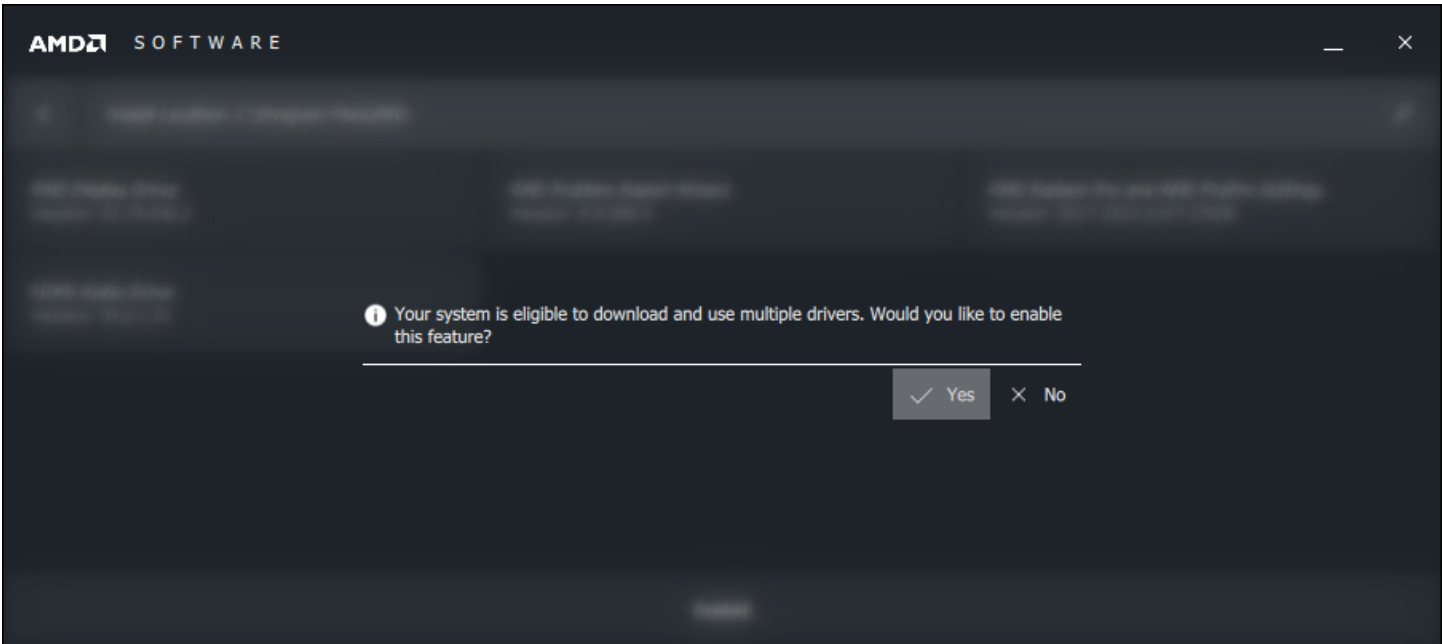
Select **Custom Install**.



**Note:** The **Driver Options** feature is only installed when performing a **Custom Install**. This feature is not available from **Express Install**.

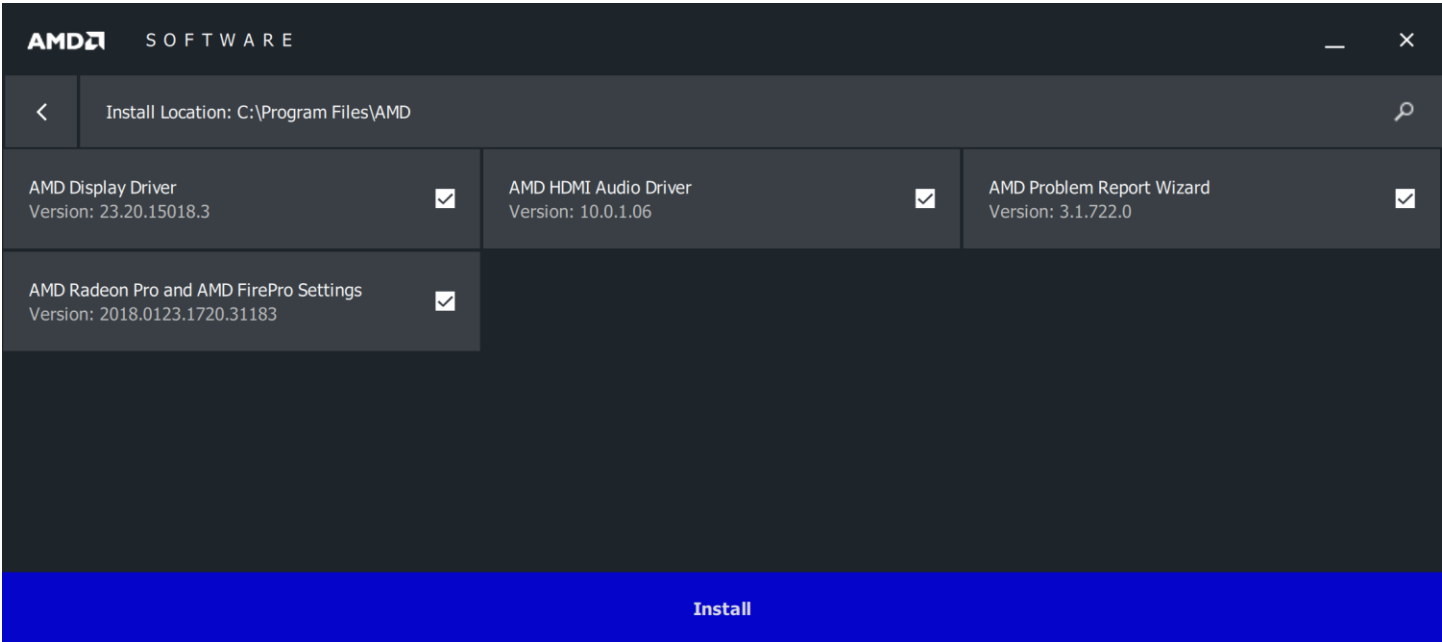


The following message will appear. Click **Yes** to enable download and use of multiple drivers.





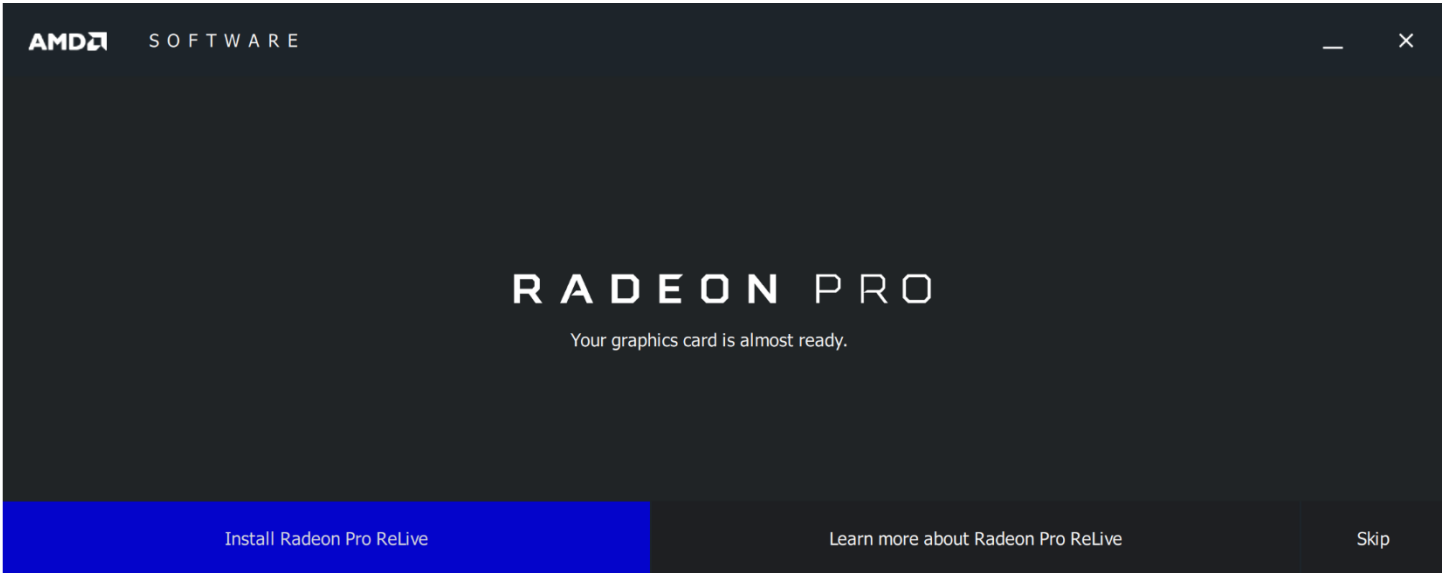
Click on **Install** to continue.



The Radeon Pro Software will now be installed.



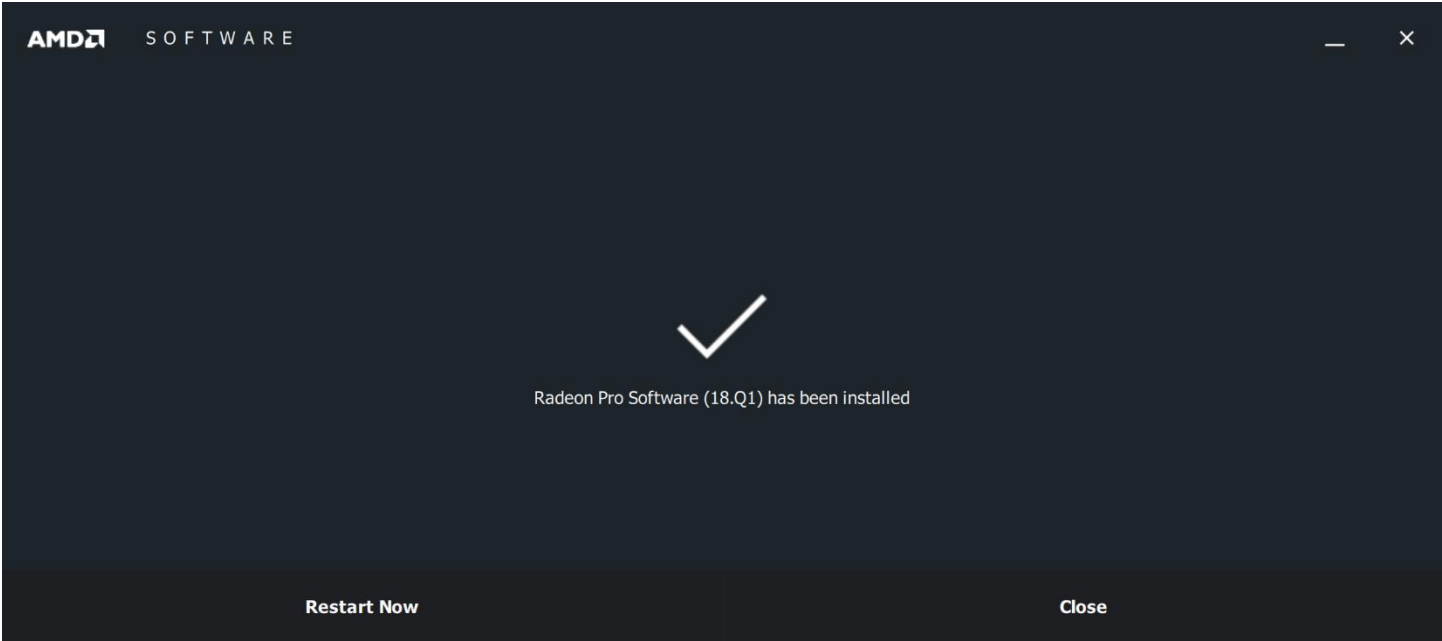
Install **Radeon™ Pro ReLive** (optional).



Confirmation that Radeon Pro Software has installed.



**Note:** It is always advisable to restart your system after installing a driver.



# Install Gaming Driver

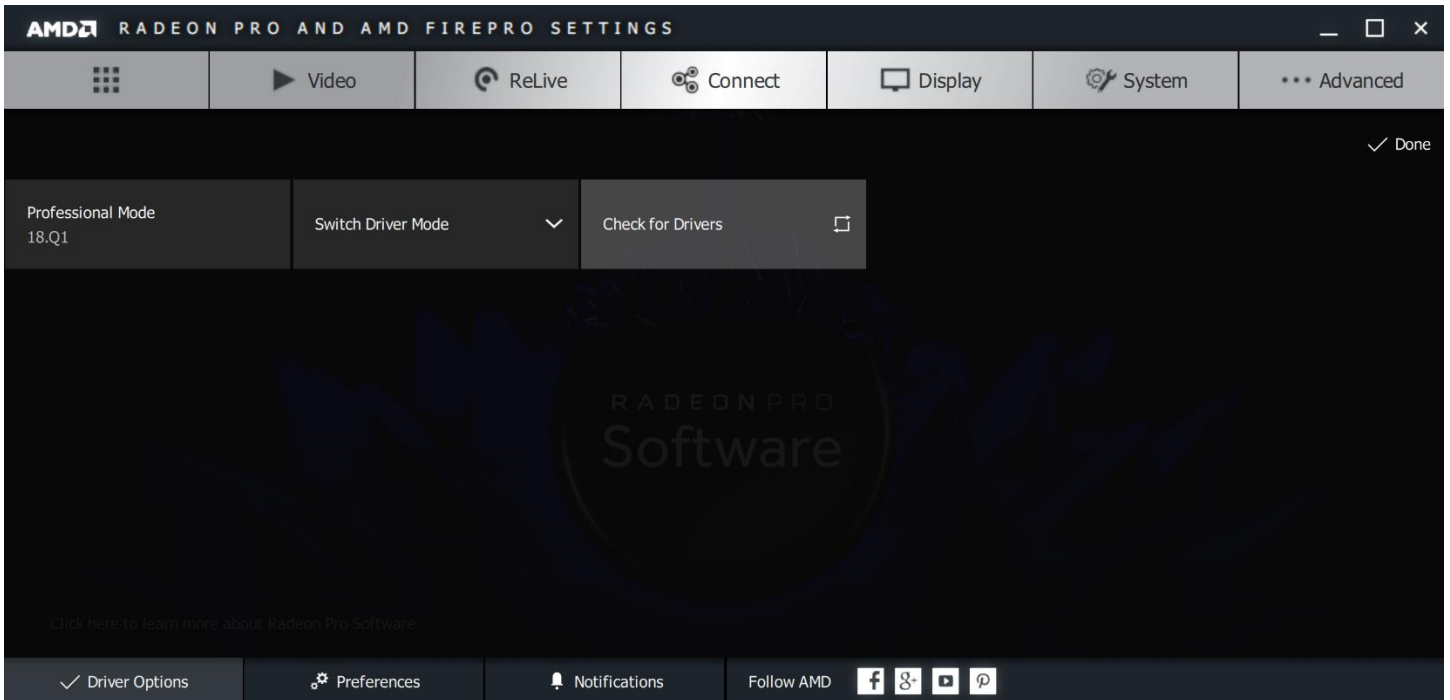
Right-click desktop to open **AMD Radeon Pro and AMD FirePro Settings**.



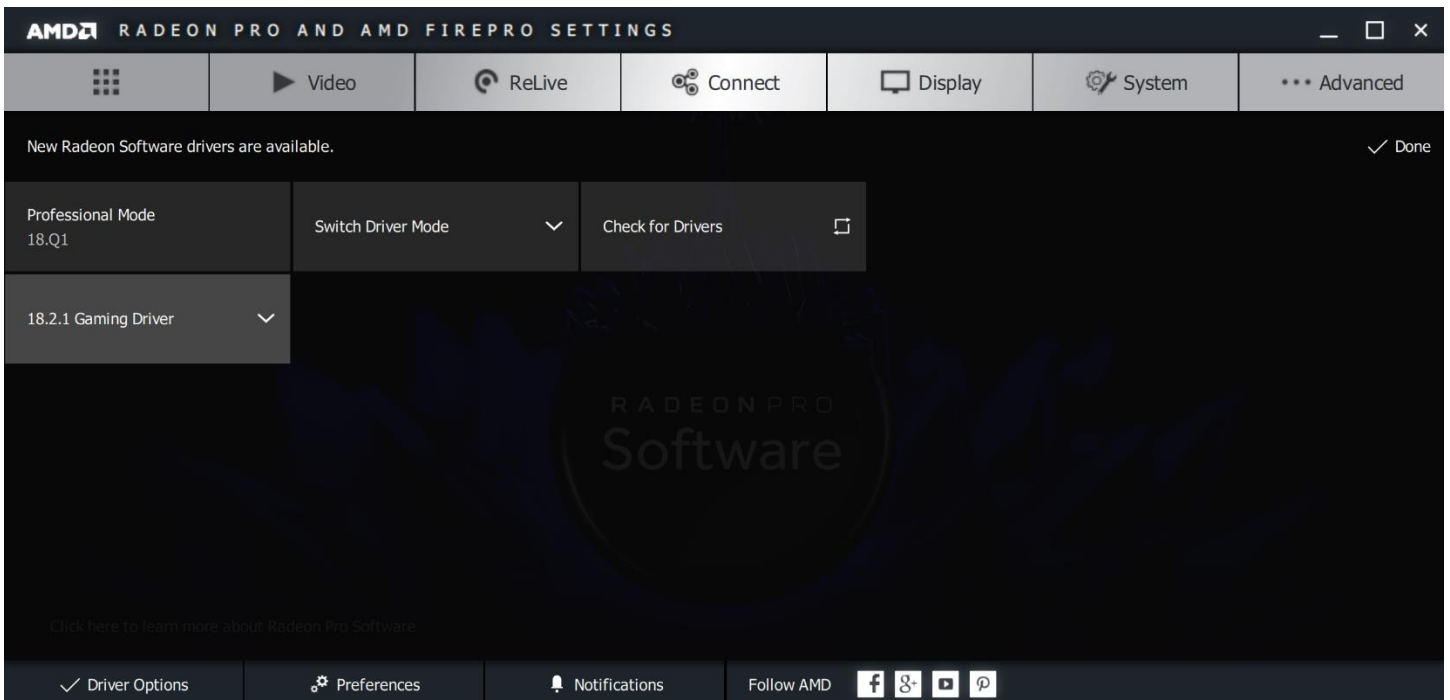
The default mode is professional mode - you can tell by the blue icon in the taskbar. Click on **Driver Options**.



Click **Check for Drivers**.



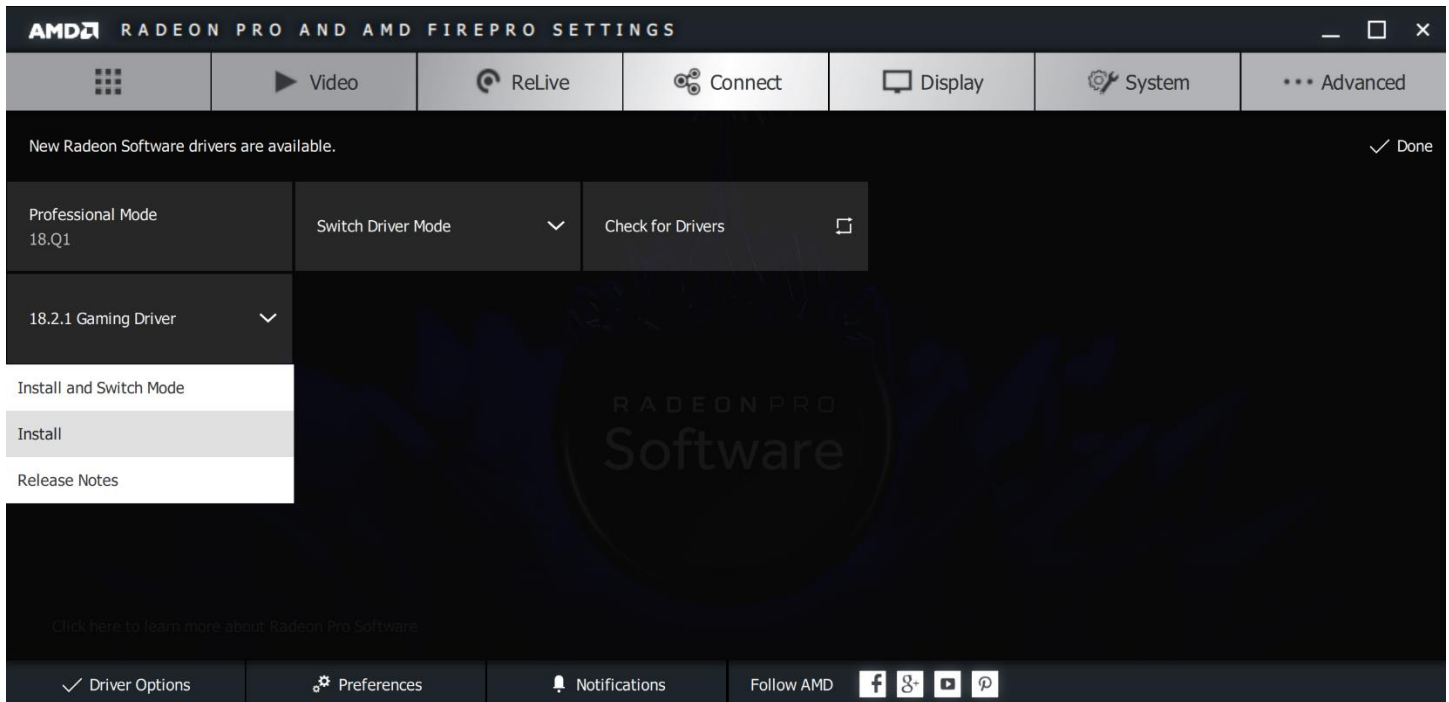
The latest Radeon Software for Radeon Pro Gaming Driver will appear. This will also show any older Radeon Software for Radeon Pro Gaming Drivers if you haven't already downloaded them.



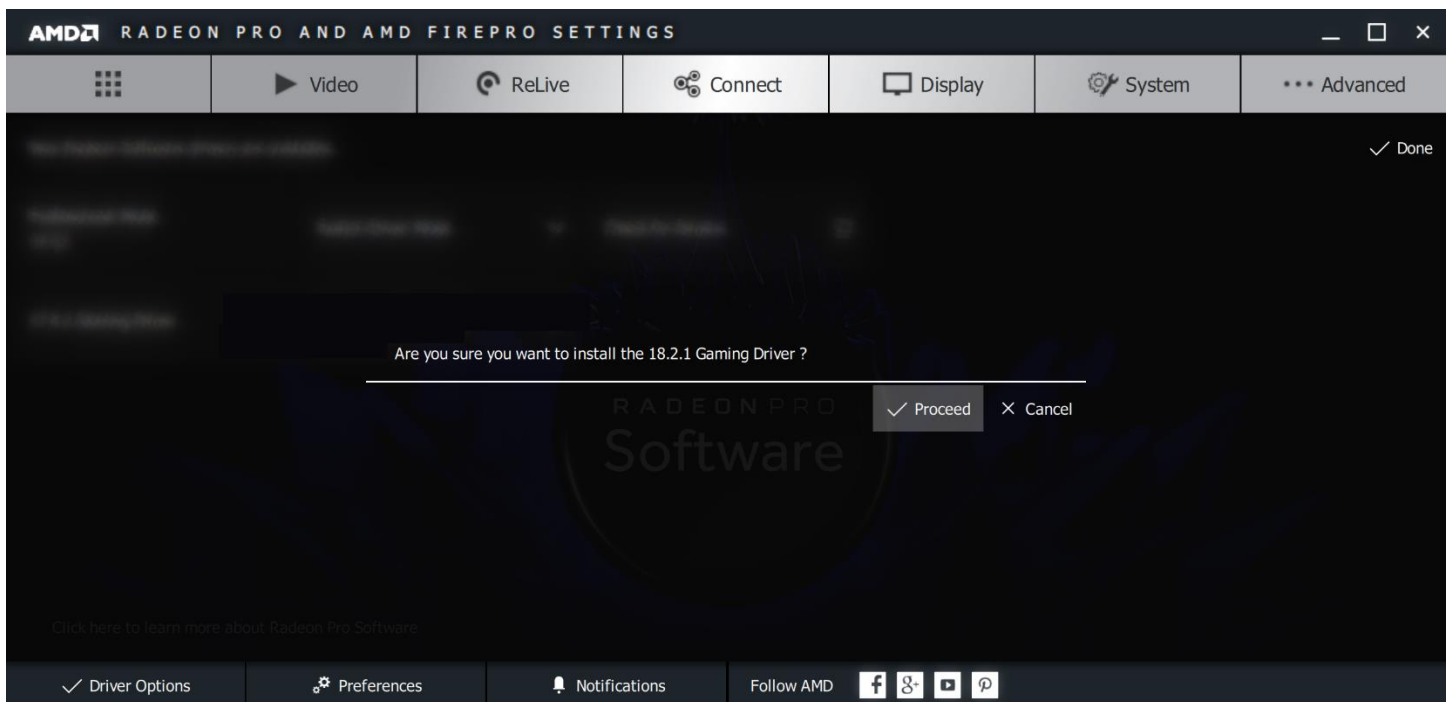
Click and install a **Gaming Driver**. You may also choose to install and switch to gaming mode directly.



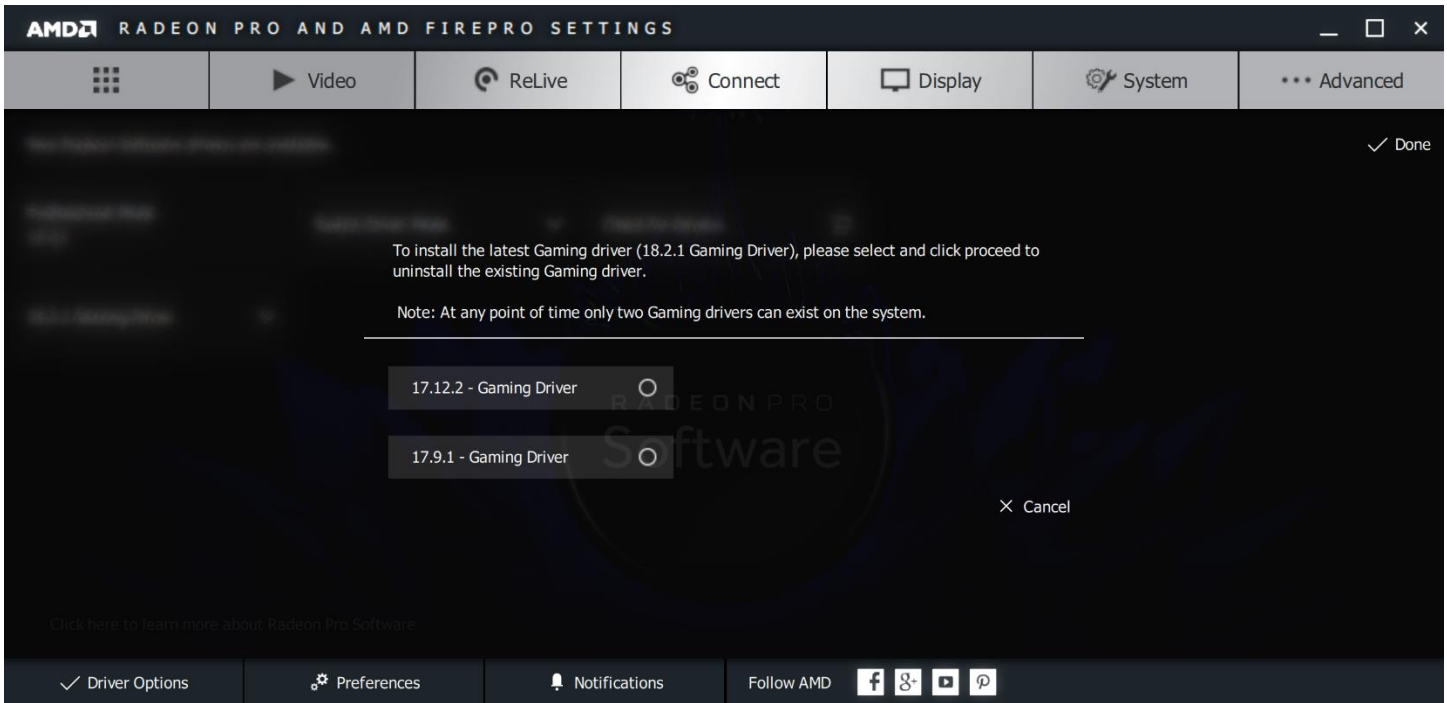
**Note:** This feature supports the install of two Gaming Drivers. It is advisable to install or switch to the latest gaming driver.



Click to **Proceed** with the installation.



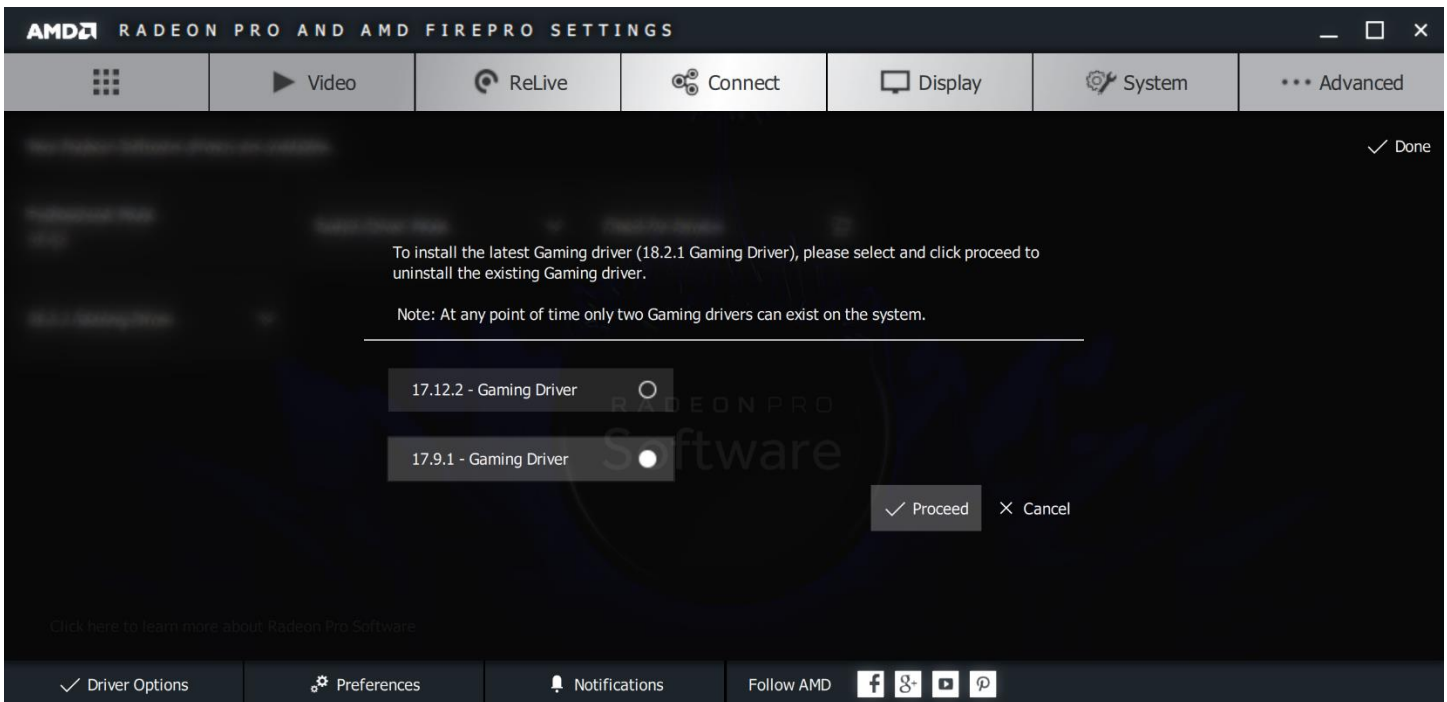
Installing a third gaming driver will prompt you to remove one of the two already installed gaming drivers.



Remove the gaming driver of your choice.



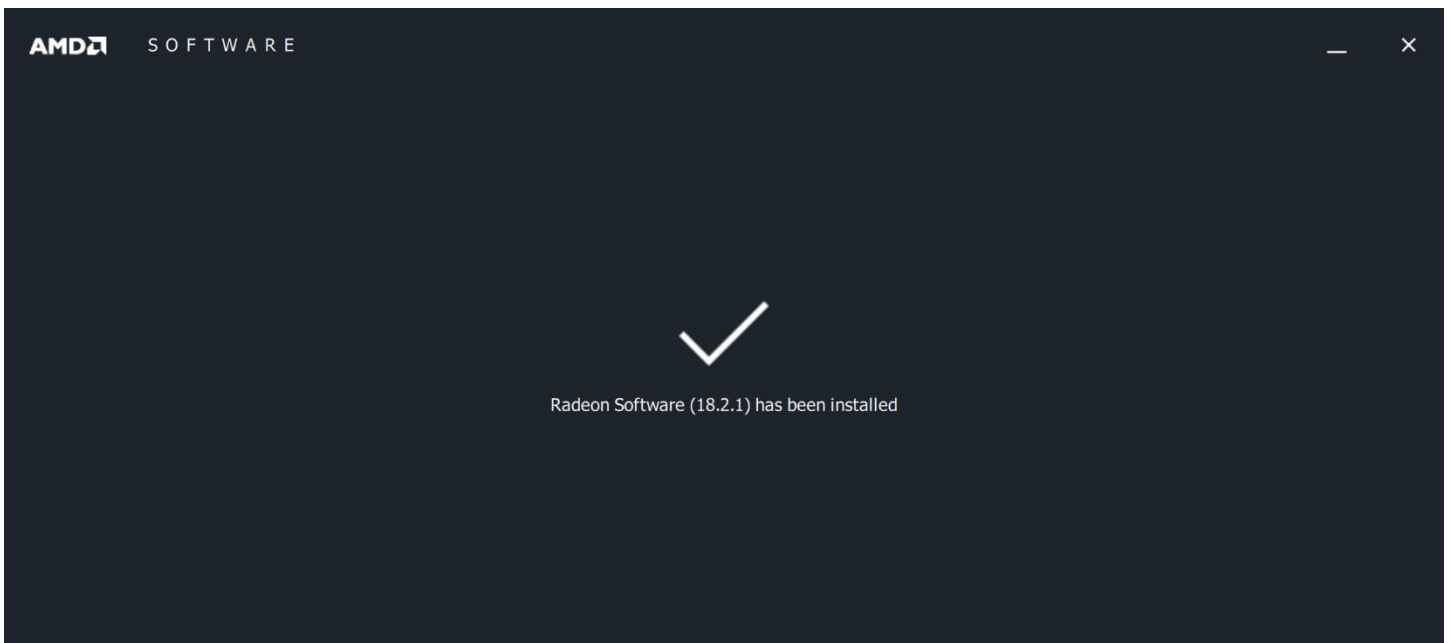
**Note:** If you are in gaming mode with a particular gaming driver, you cannot remove that gaming driver. Please switch to a different gaming driver or back to professional mode.



Radeon Software for Radeon Pro driver will now be installed.

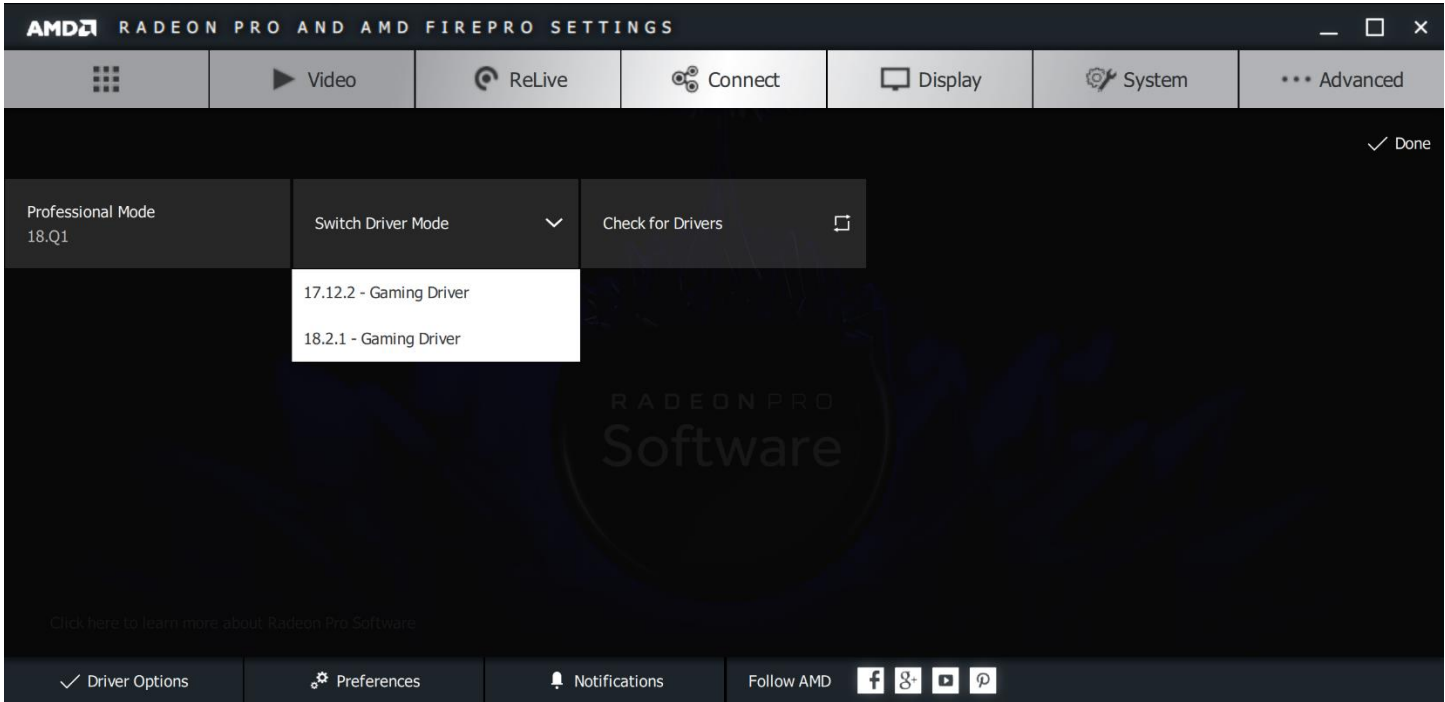


Confirmation that Radeon Software for Radeon Pro has installed.

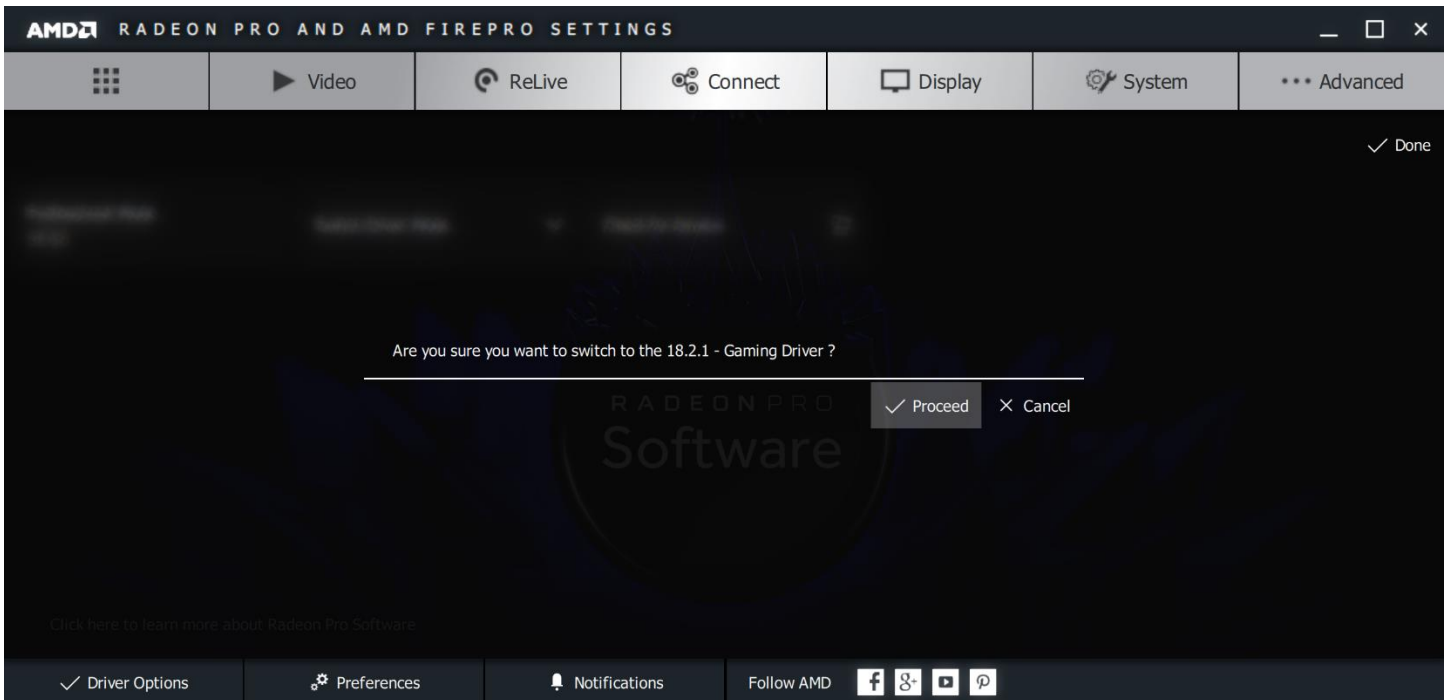


# Switching to Gaming Mode

Right-click desktop to open **AMD Radeon Pro and AMD FirePro Settings** again. Go to **Driver Options**. Click **Switch Driver Mode**. You have the option of switching to your installed gaming drivers.



Under **Switch Driver Mode**, switch to the **Gaming Driver**.

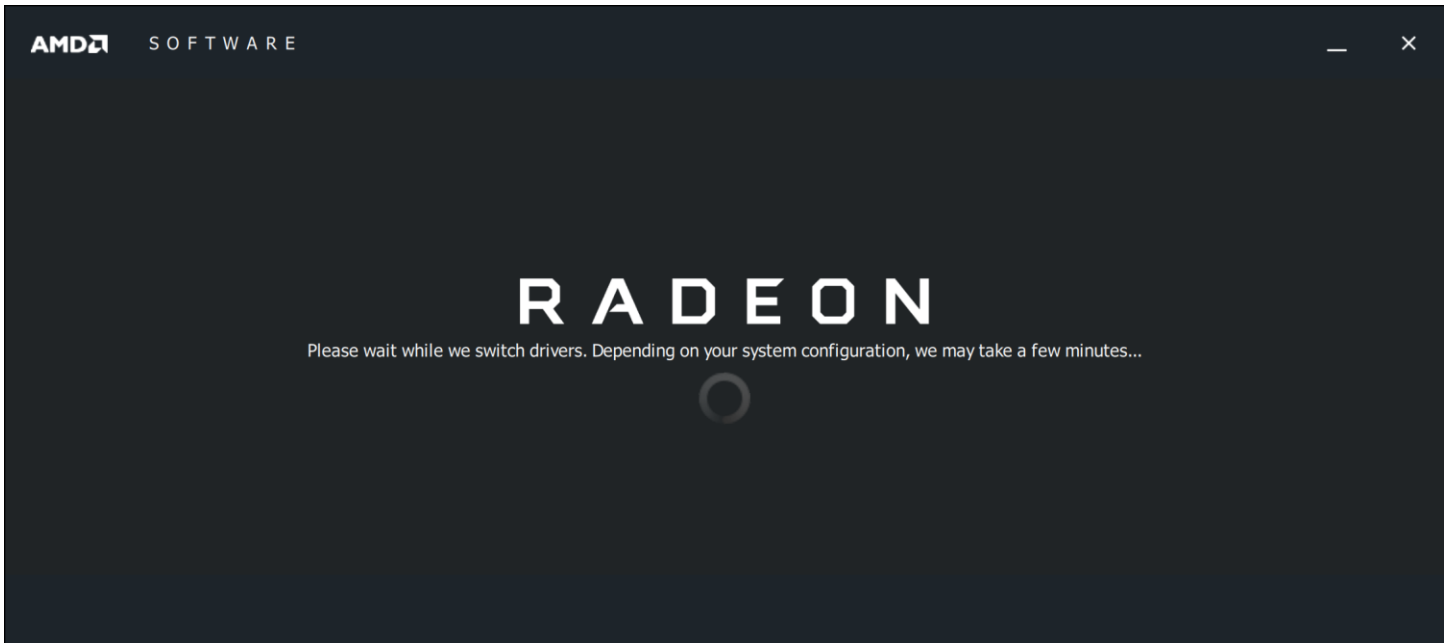




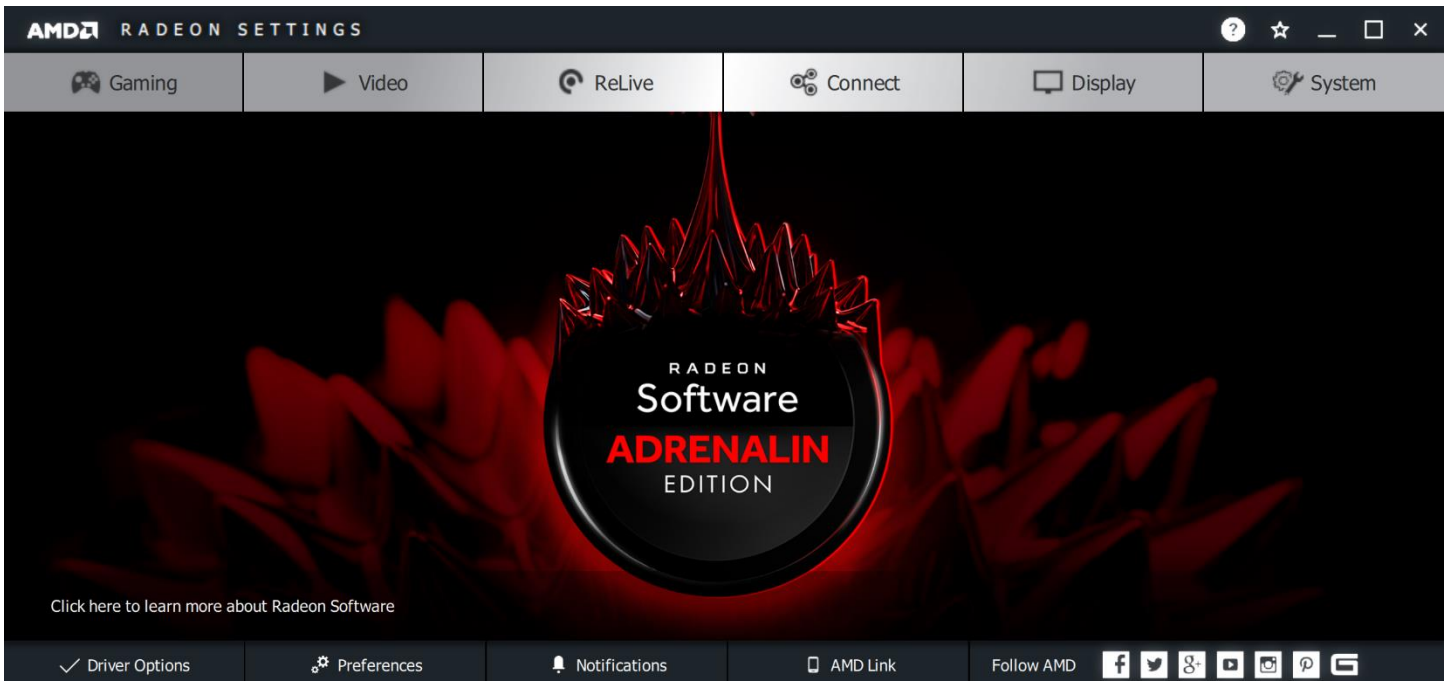
Your system will switch drivers.



**Note:** Your screen may flicker during this process.

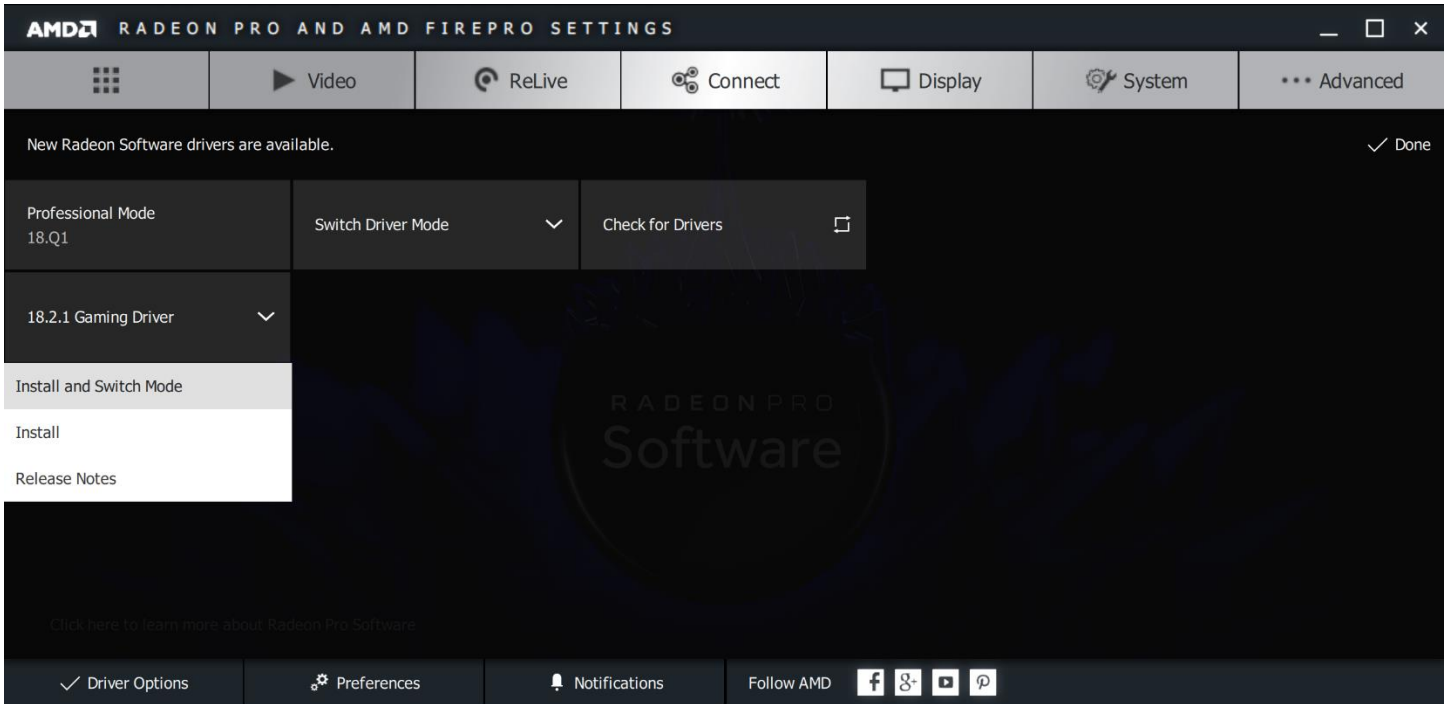


After switching to Gaming Mode, the user interface displays **Radeon Software** and a red icon on the taskbar. In Gaming Mode, you can still check for updates for the latest Radeon Software for Radeon Pro, and directly install and/or switch to a different Gaming Driver.

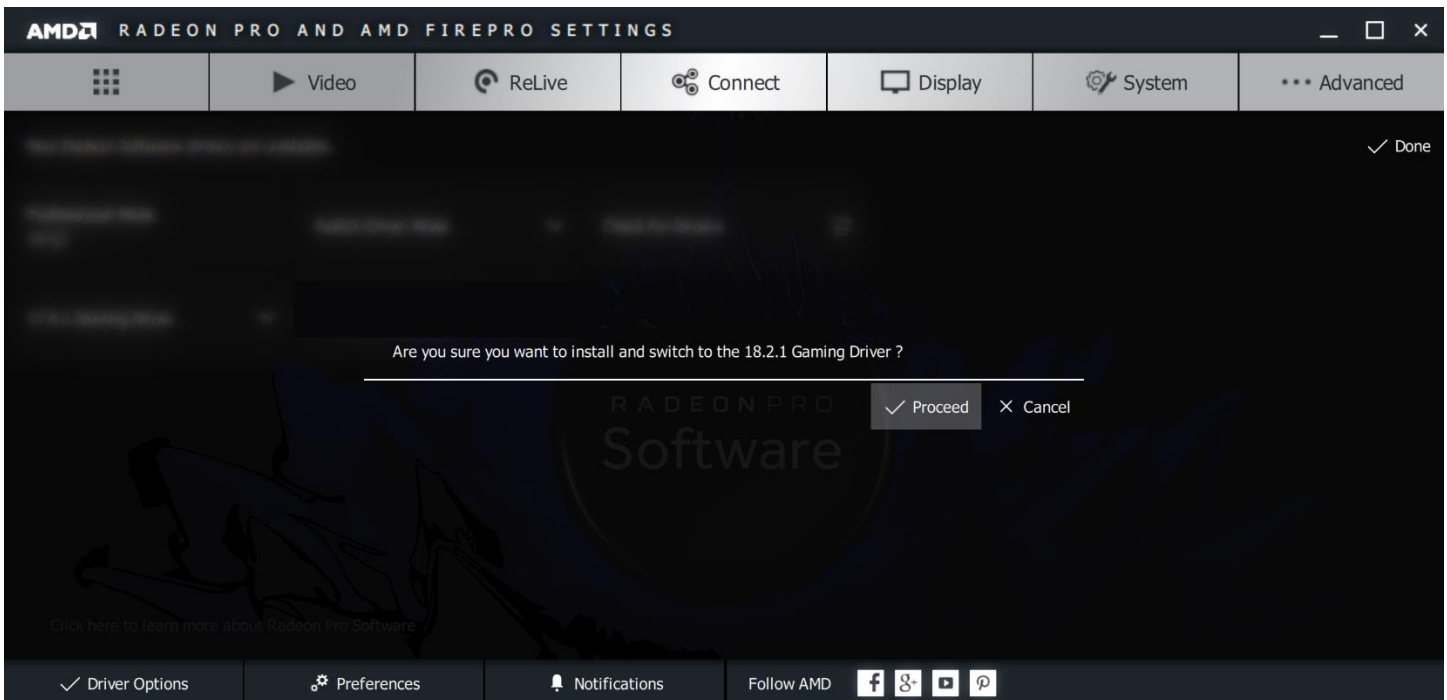


# Install and Switch to Gaming Mode

Under **Driver Options**, you can also install and switch directly to Gaming Mode from Professional Mode.



Click to **Proceed** with the installation and switch.

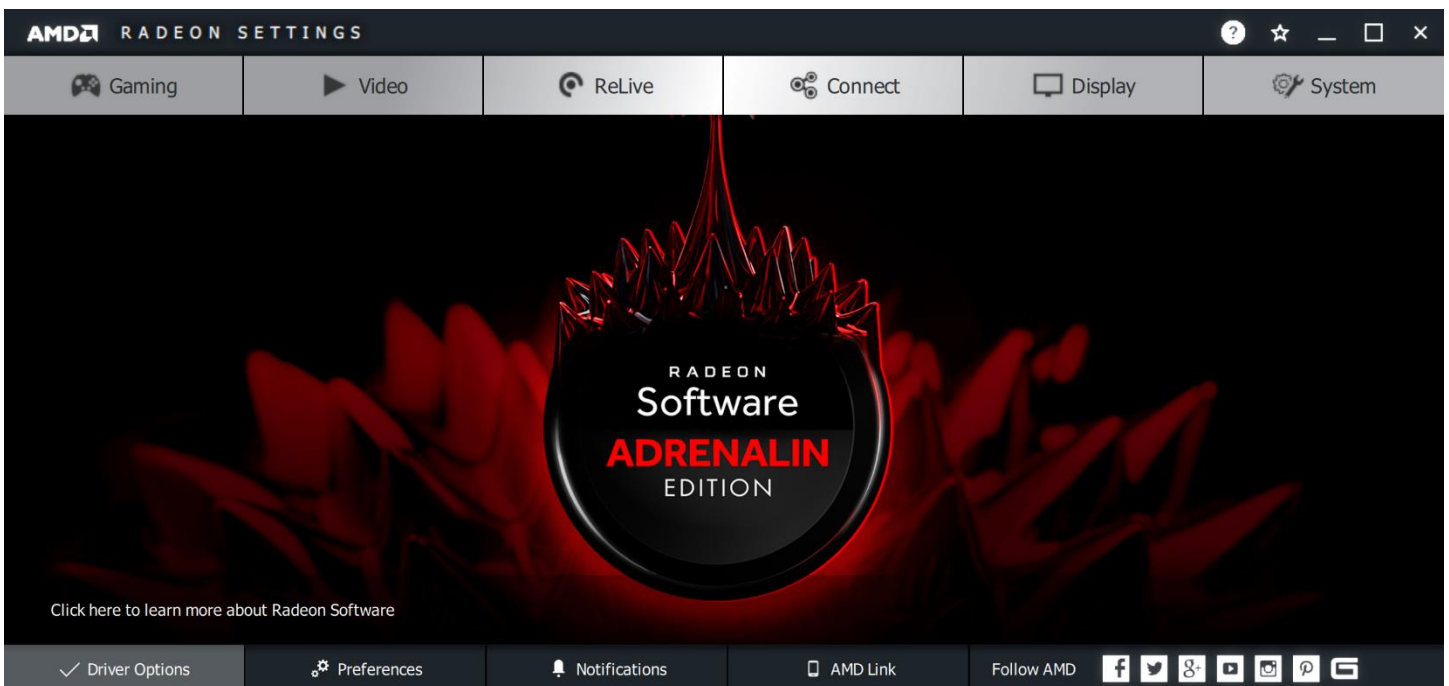


# Switching back to Professional Mode

Right-click desktop to open **AMD Radeon Settings**.



Go to **Driver Options**.

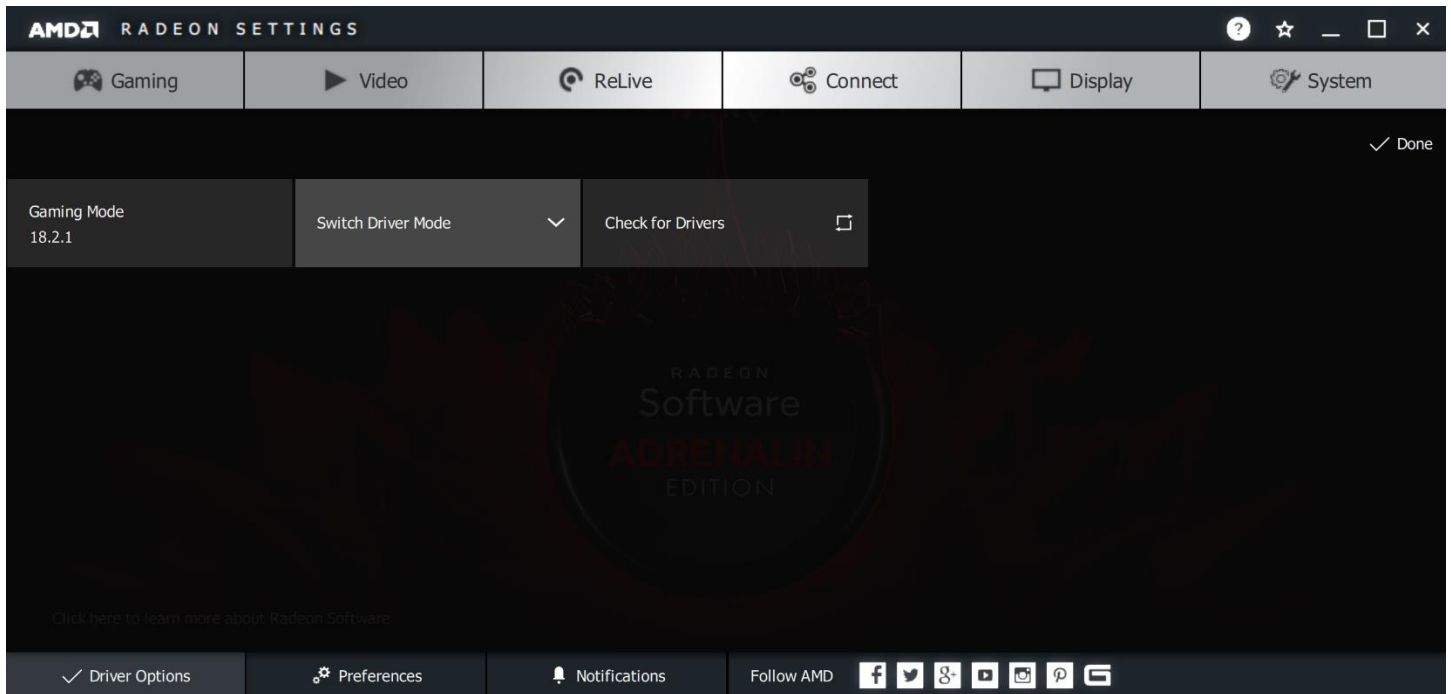


## SWITCH TO PROFESSIONAL MODE

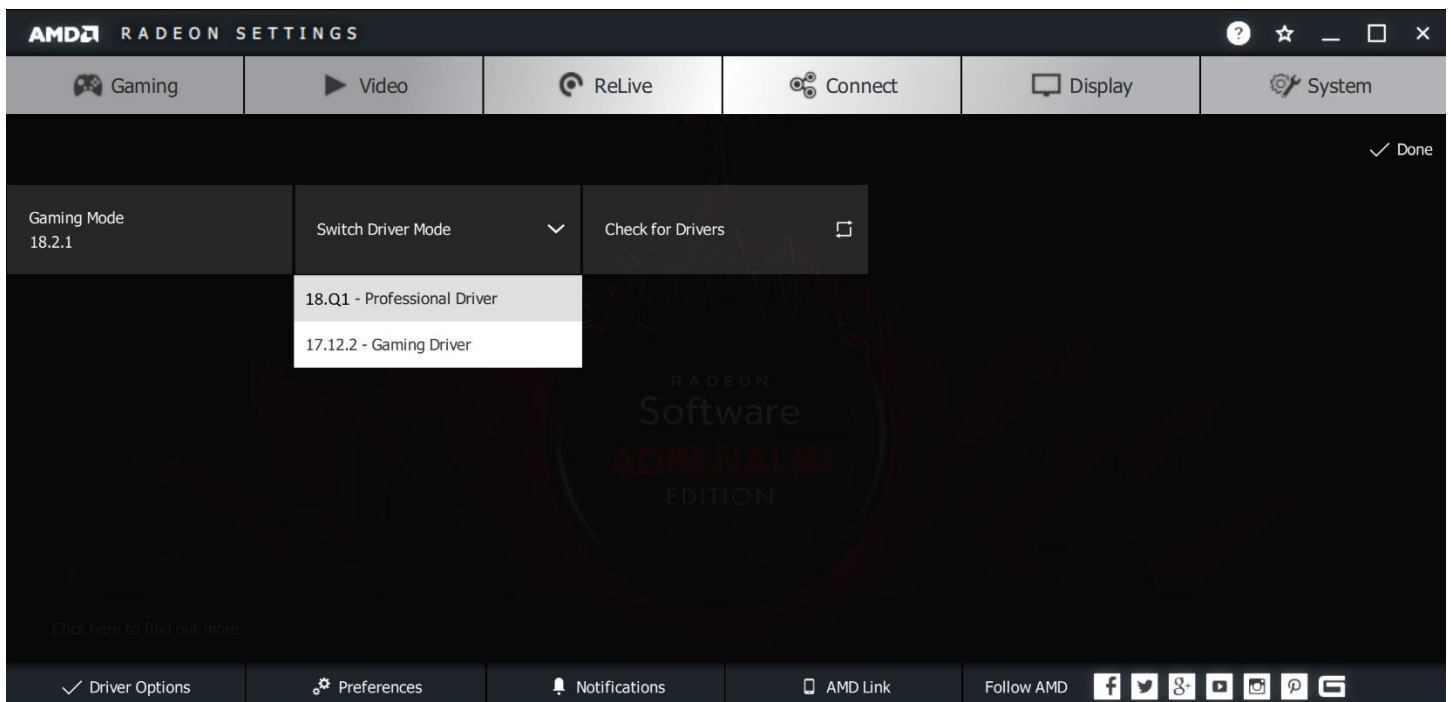
Click **Switch Driver Mode**. You also have the option of switching to any installed drivers.



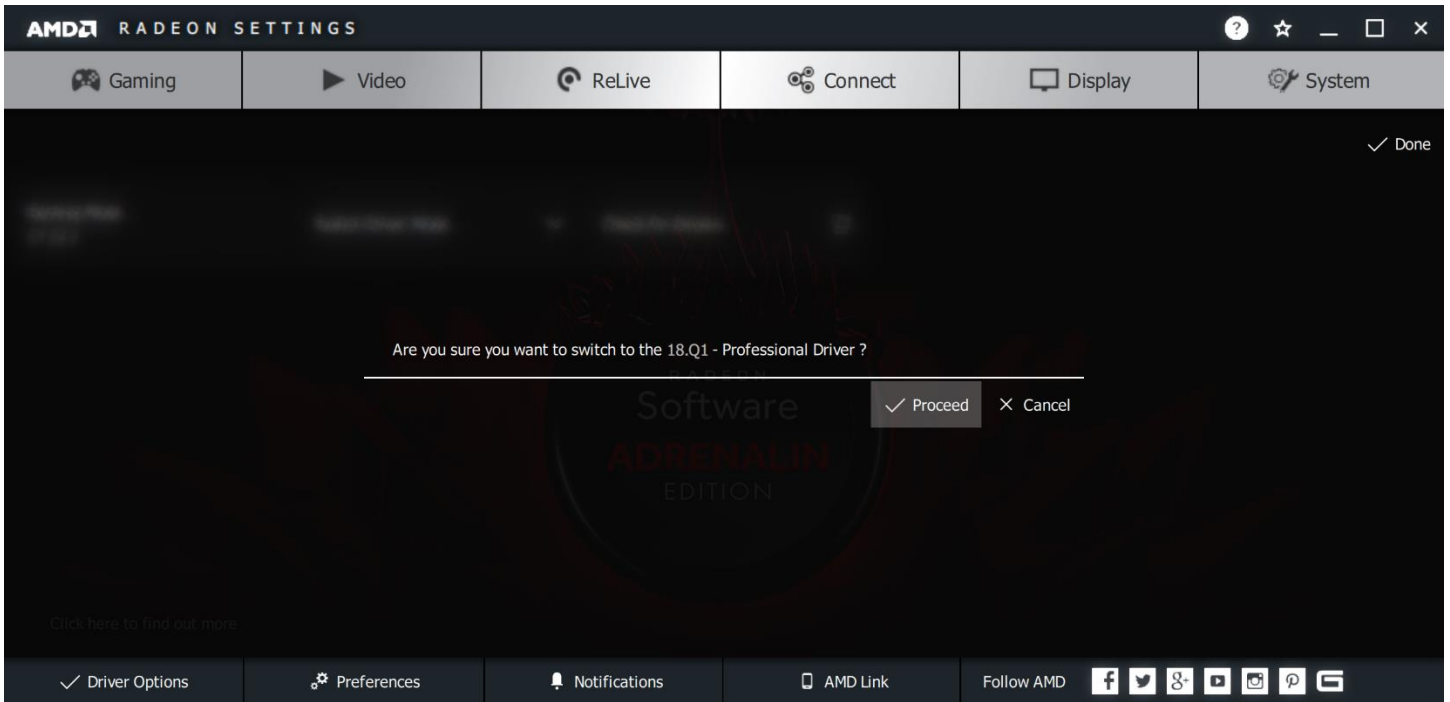
**Note:** You can also check for any new gaming drivers by clicking **Check for Drivers**. You can directly install and switch to other gaming drivers in Gaming Mode.



To switch back to Professional Mode, go to **Switch Driver Mode** and select the Professional Driver.



Click to **Proceed** with the switch.





# Driver Options in AMD Radeon Pro Settings

**User Guide**

Written by: Annie Yu

08/08/2018

©2018 Advanced Micro Devices, Inc.

All rights reserved.