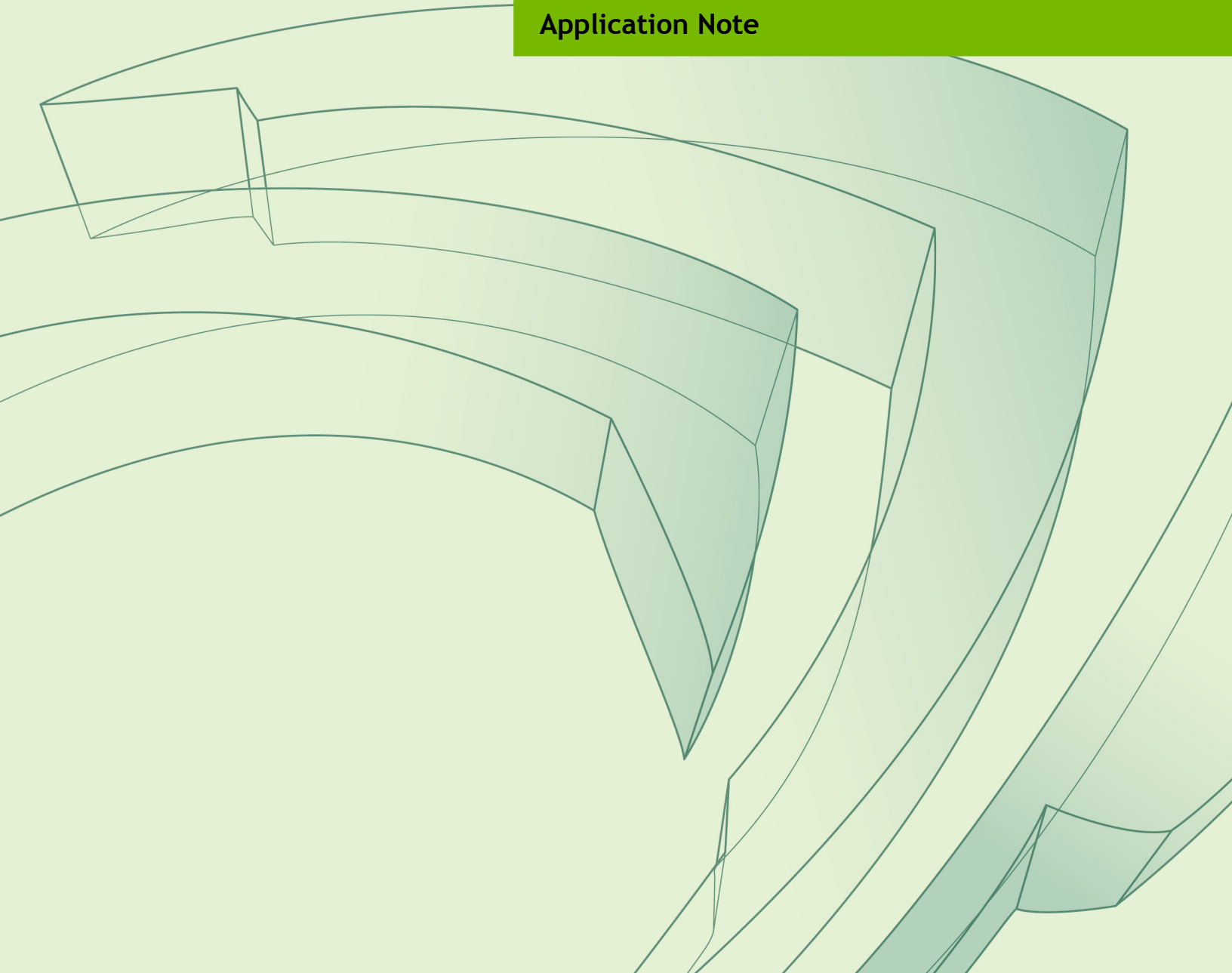




NVIDIA QUADRO PROFESSIONAL GRAPHICS SOLUTIONS DISPLAY RESOLUTION SUPPORT

DA-05265-001_v03 | March 2011

Application Note



DOCUMENT CHANGE HISTORY

DA-05265-001_v03

Version	Date	Authors	Description of Change
01	May 18, 2010	VL, SM	Initial Release
02	March 10, 2011	SF, AS, SM	•Updated with Quadro Fermi products
03	March 25, 2011	FP, SM	•Updated Table 1, Table 3, and Table 4

TABLE OF CONTENTS

- Overview 1**
- Resolution Tables 6**
 - Default Modes Supported by GPUs..... 8
 - Maximum Resolutions 10

LIST OF FIGURES

Figure 1.	NVIDIA Control Panel: Change Resolution Page	2
Figure 2.	NVIDIA Control Panel: Add Resolutions.....	3
Figure 3.	Create Custom Resolutions Page	4
Figure 4.	Alternative Create Custom Resolutions Page.....	5

LIST OF TABLES

Table 1.	Display Capability Support for Quadro Professional Graphics Solutions	7
Table 2.	Display Resolutions.....	9
Table 3.	Maximum Resolutions for Native Display Connectors	10
Table 4.	Maximum Resolutions for Display Dongles	10

OVERVIEW

This application note lists the display resolutions capable of being supported by the latest generation of NVIDIA Quadro® Professional Graphics Solutions. The model numbers of the different Quadro® products that are supported in this application note are listed in Table 1. In addition, this application note calls out the different display technologies that are supported by the various Quadro products, along with the maximum resolutions that can be supported via the different native display connectors and display dongles and adapters.

The resolutions listed in this application note represent the standard modes that are supported by the listed Quadro Professional Graphics Solutions through the available display interfaces.


Current monitors have the ability to expose what resolutions are supported to the attached graphics card. From this information, a list of valid resolutions are generated and used (EDID – Extended Display Identification Data) by the operating system. NVIDIA® products will automatically enable these resolutions as long as they fall within the hardware capabilities of that specific NVIDIA product.



Note: Depending on the specific display panel and display interface used to connect to the Quadro graphics solution, all the resolutions listed in the resolution table(s) may not be available in the NVIDIA Display Control Panel. Alternately, depending on the specific connector monitor, additional modes not listed in the resolution tables may be available for selection in the NVIDIA Display Control Panel (Figure 1).

In special cases, more resolutions can be custom added by the user and made available, using the **Add Resolution** button on the **Change Resolution** Display Control Panel page. Any new resolution can be added by the user, as long as they fall within the hardware capabilities of the specific Quadro products. The process of adding custom resolutions is

quite self explanatory and can be set using the NVIDIA Control Panel (Figure 2, Figure 3, and Figure 4). For more information on adding custom resolutions, refer to the online help section available in the NVIDIA Control Panel.

 **Note:** Online Help can be accessed by pressing F1 in the NVIDIA Control Panel.

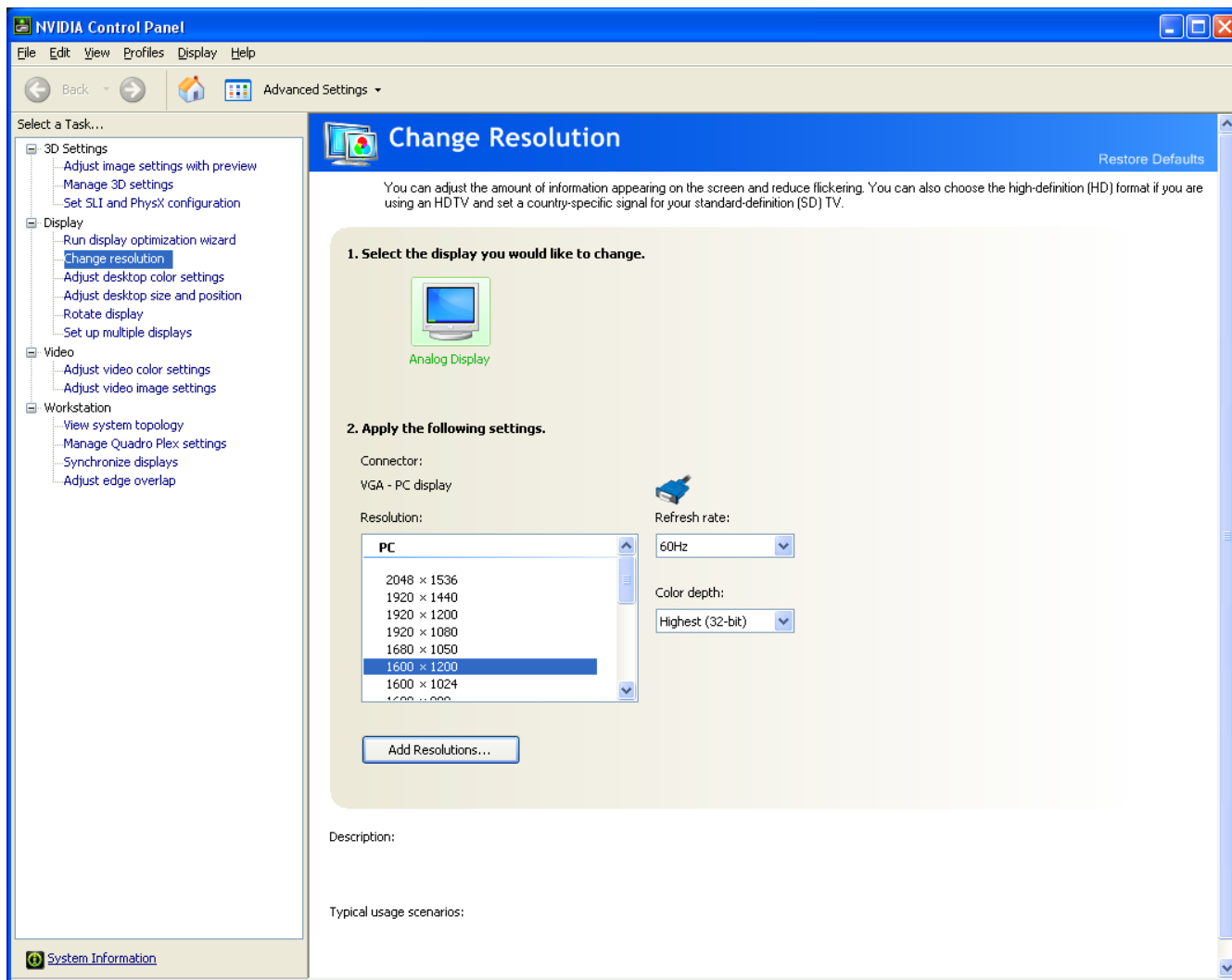


Figure 1. NVIDIA Control Panel: Change Resolution Page

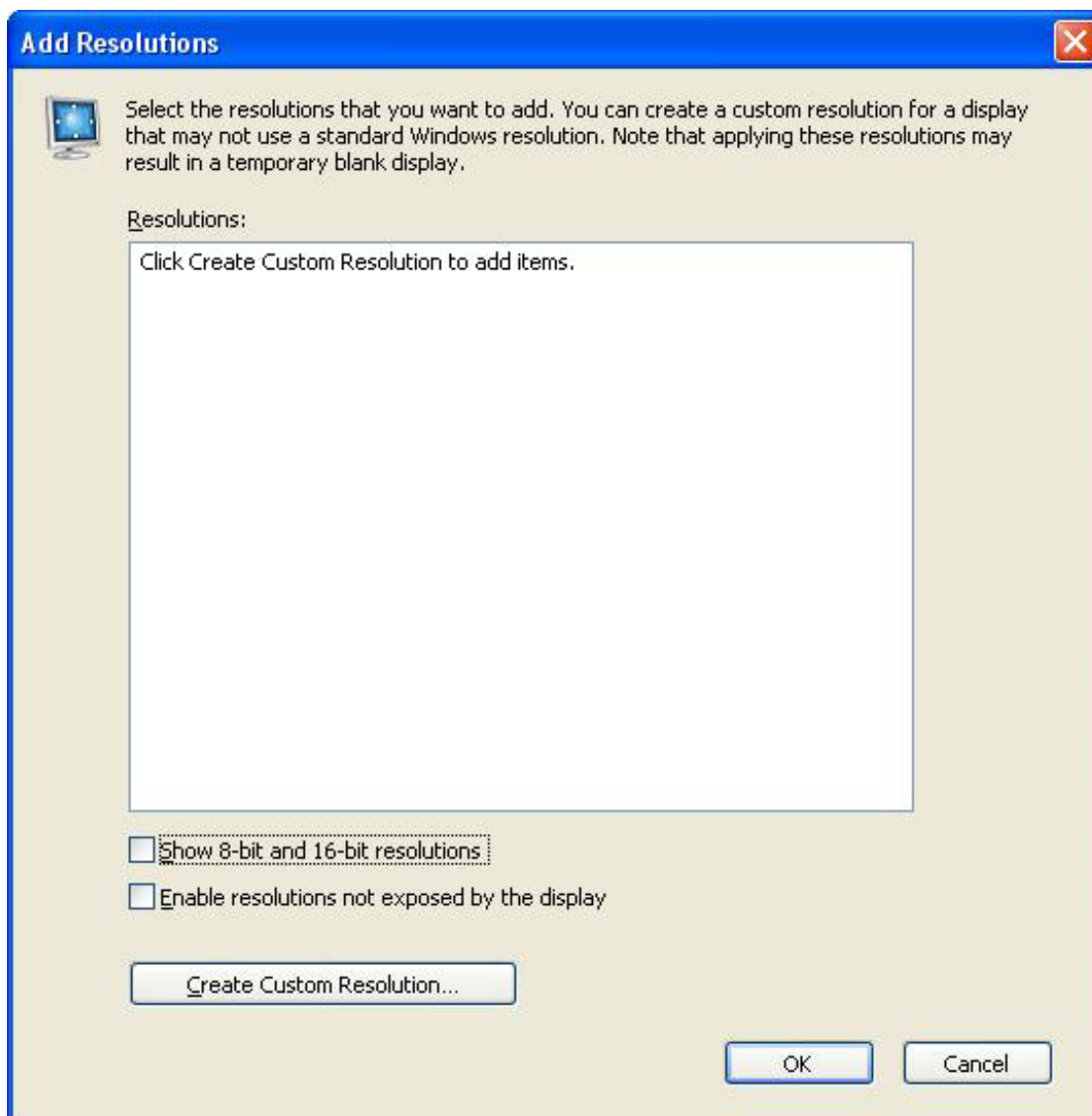


Figure 2. NVIDIA Control Panel: Add Resolutions

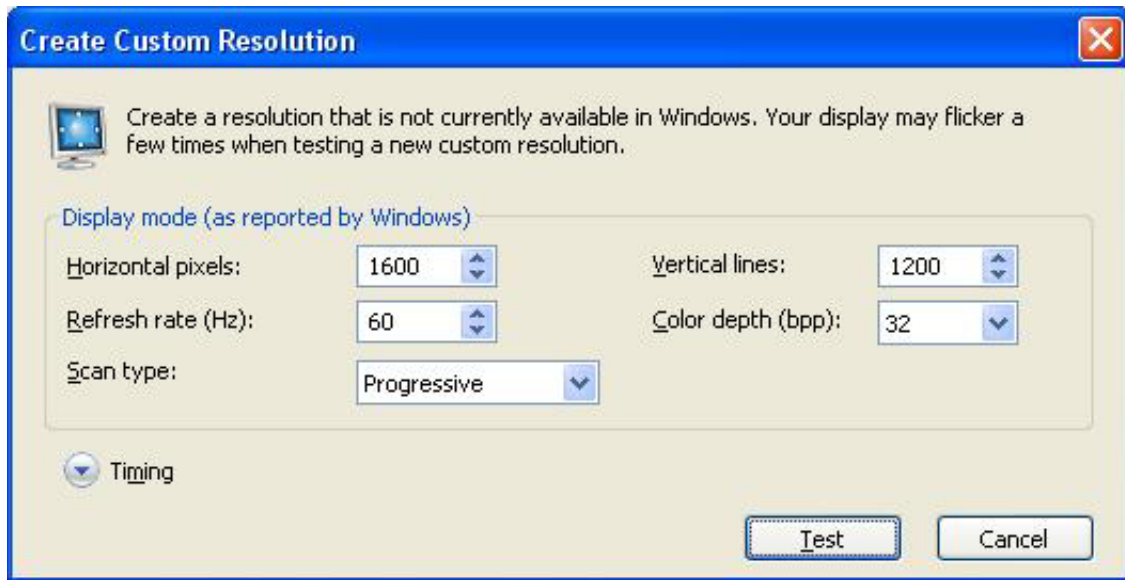


Figure 3. Create Custom Resolutions Page

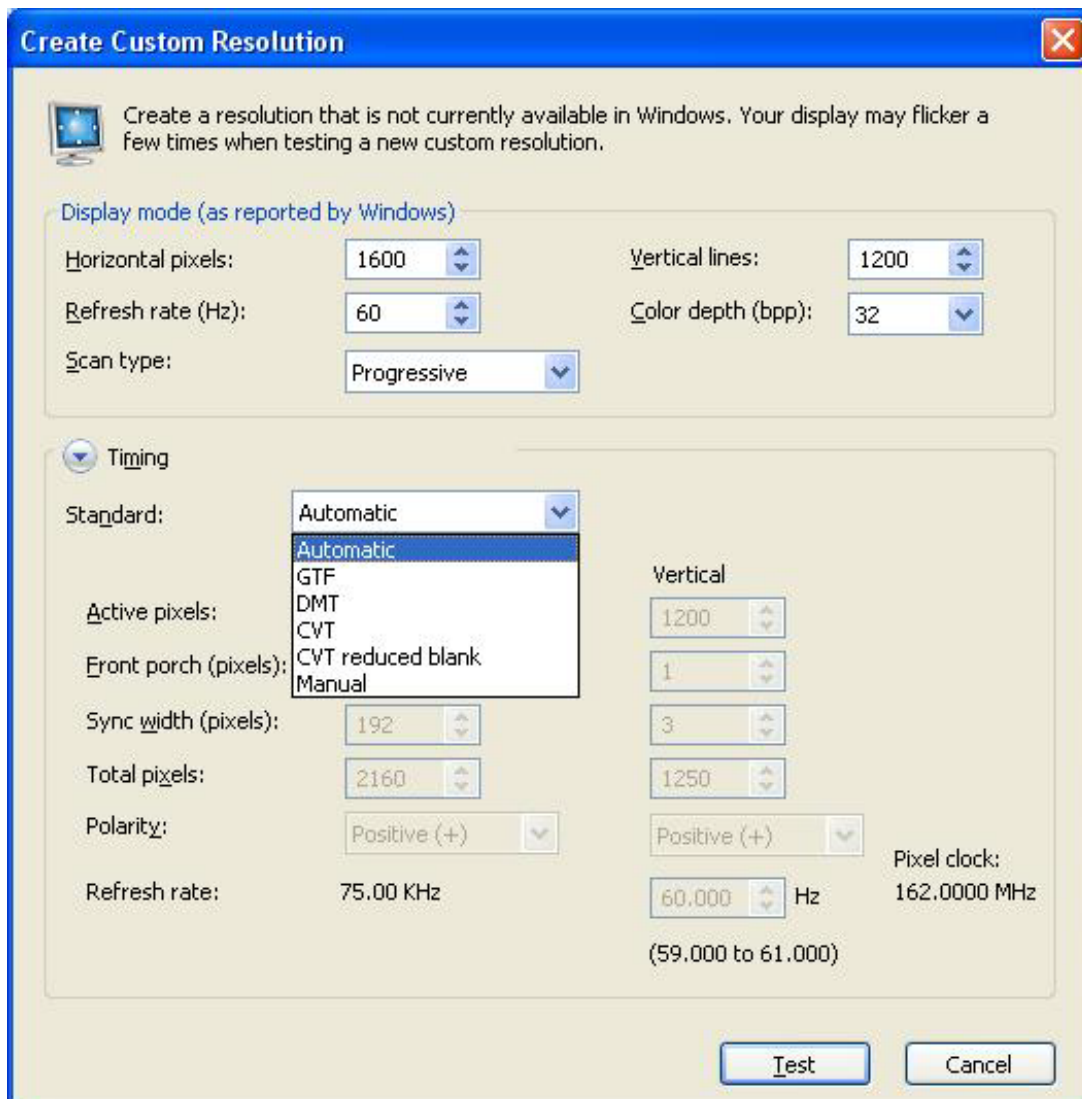


Figure 4. Alternative Create Custom Resolutions Page



Note: Linux users will need to add a monitor specific mode line.

Note: The entire NVIDIA Control Panel' images shown in this application note are for the Windows XP (64-bit) Operating System version. The NVIDIA Control Panel for alternate Windows Operating Systems, will be similar, but may not be exactly the same as shown in Figure 1 through Figure 4.

RESOLUTION TABLES

This section lists the different NVIDIA Quadro Professional Graphics Solutions whose display capabilities are covered in this application note. Legacy Quadro products are not covered in this application. However, the display resolution table for legacy Quadro products can be found in the *NVIDIA Quadro GPUs Resolution Tables Application Note* (document number DA-00591-002). Contact your NVIDIA Sales Representative or Field Application Engineer (FAE) to get access to this application note.

The various products covered in this application note are listed in Table 1. This table calls out the different display interface technologies supported, either natively or via a dongle / adaptor, by the respective Quadro products.

The following key legend is for Table 1.

- ▶ Y – Display supported natively (display interface available on the graphics product).
- ▶ D – Display supported via a dongle (either active or passive).
- ▶ N – Display technology not supported (either natively or via dongles).
- ▶ (#) – The number inside the parenthesis represents the number of connectors of the specific display connector available on the specific graphics solution.

Table 1. Display Capability Support for Quadro Professional Graphics Solutions

	VGA	Single-Link DVI	Dual-Link DVI	DisplayPort
Quadro Fermi				
Quadro 6000	D(1)	Y(1)	Y(1)	Y(2)
Quadro 5000	D(1)	Y(1)	Y(1)	Y(2)
Quadro 4000	D(1)	Y(1)	Y(1)	Y(2)
Quadro 2000	D(1)	Y(1)	Y(1)	Y(2)
Quadro 2000D	D(2)	Y(2)	Y(2)	N
Quadro 4000 Mac	D(1)	Y(1)	Y(1)	Y(1)
Quadro 600	D(1)	Y(1)	Y(1)	Y(1)
Quadro 400	D(1)	Y(1)	Y(1)	Y(1)
Quadro FX PCIe				
Quadro FX 5800	D(2)	Y(2)	Y(2)	Y(1)
Quadro FX 4800	D(1)	Y(1)	Y(1)	Y(2)
Quadro CX	D(1)	Y(1)	Y(1)	Y(2)
Quadro 4800 Mac	D(2)	Y(2)	Y(2)	N
Quadro FX 5600	D(2)	Y(2)	Y(2)	N
Quadro FX 4600	D(2)	Y(2)	Y(2)	N
Quadro FX 3800	D(1)	Y(1)	Y(1)	Y(2)
Quadro FX 3700	D(2)	Y(2)	Y(2)	N
Quadro FX 1800	D(1)	Y(1)	Y(1)	Y(2)
Quadro FX 1700	D(2)	Y(2)	Y(2)	N
Quadro FX 580	D(1)	Y(1)	Y(1)	Y(2)
Quadro FX 570	D(2)	Y(2)	Y(2)	N
Quadro FX 380	D(2)	Y(2)	Y(2)	N
Quadro FX 380 LP	D(1)	Y(1)	Y(1)	Y(1)
Quadro FX 370	D(2)	Y(1)	Y(1)	N
Quadro FX 370 Low Profile (active)	D(2)	D(2)	N	N
Quadro FX 370 Low Profile (passive)	D(2)	D(2)	N	N
Quadro NVS				
Quadro NVS 450	D(4) DP->VGA	D(4) DP-DVI-SL	D(4) DP->DVI-DL	Y(4)
Quadro NVS 420 x16	D*(4) DP->VGA	D(4)	D*(4) DP-> DVI-DL	D(4)
Quadro NVS 420 x1	D*(4) DP->VGA	D(4)	D*(4) DP-> DVI-DL	D(4)
NVS 300 x16	D(2)	D(2)	N	D(2)

	VGA	Single-Link DVI	Dual-Link DVI	DisplayPort
NVS 300 x1	D(2)	D(2)	N	D(2)
Quadro NVS 295 x16	D(2)	D(2)	D(2)	Y(2)
Quadro NVS 295 x1	D(2)	D(2)	D(2)	Y(2)
Quadro NVS 290 x16	D(2)	D(2)	N	N
Quadro NVS 290 x1	D(2)	D(2)	N	N
Quadro Workstation Blades and EGBs				
Quadro FX 370M Blade	Y (1)	Y (2)	N	N
Quadro FX 770M Blade	Y (1)	Y (2)	Y	N
Quadro FX 1600M Blade	Y (1)	Y (2)	Y	N
Quadro FX 3600M Blade	Y (1)	Y (2)	Y	N
Quadro FX 880M Blade	Y (1)	D	D	Y (2)
Quadro FX 2800M Blade	Y (1)	D	D	Y (2)

Note 1: Native single-link and dual-link DVI means support for DVI-I as well as DVI-D.

Note 2: All Quadro FX and Quadro NVS (except NVS 4xx series) products can support a maximum of 2 screens natively or via dongles simultaneously.

Note 3: * - these display technologies can be supported using 2 dongles in a series.

DEFAULT MODES SUPPORTED BY GPUS

This section lists the modes that are included by default in the NVIDIA driver INF for the Quadro Professional Graphics Solutions product family listed in Table 1

Table 2 lists the default (and most commonly available) resolutions that are supported in the NVIDIA drivers via the different display interfaces. The resolutions listed in Table 2 assume a refresh rate of 60 Hz and a standard 24 bits per pixel color depth. Any changes to the color depth (for example, going up to 30 bits per pixel) or refresh rates (for example, 60 Hz to 120 Hz) will impact the list of resolutions that are supported.

As mentioned earlier in this application note, depending on the resolutions supported by the specific monitor connected to the Quadro graphics product:

- ▶ All the modes listed in the resolution table (Table 2) may not be available in the NVIDIA Display Control Panel.
- ▶ Furthermore, additional (non standard) modes available on a specific monitor may be available for selection in the NVIDIA Display Control Panel.

Table 2. Display Resolutions

Resolution	Single-Link DVI	VGA	Dual-Link DVI	DisplayPort
640 x 480	/	/	/	/
720 x 480	/	/	/	/
720 x 576	/	/	/	/
800 x 600	/	/	/	/
1024 x 768	/	/	/	/
1152 x 864	/	/	/	/
1280 x 720	/	/	/	/
1280 x 768	/	/	/	/
1280 x 800	/	/	/	/
1280 x 960	/	/	/	/
1280 x 1024	/	/	/	/
1360 x 768	/	/	/	/
1366 x 768	/	/	/	/
1600 x 900	/	/	/	/
1600 x 1024	/	/	/	/
1600 x 1200	/	/	/	/
1680 x 1050	/	/	/	/
1920 x 1080	/	/	/	/
1920 x 1200	/	/	/	/
1920 x 1440		/	/	/
2048 x 1152	/	/	/	/
2048 x 1536		/	/	/
2560 x 1440			/	/
2560 x 1600			/	/

MAXIMUM RESOLUTIONS

The maximum resolution supported by a Quadro graphics processor is a factor of the following 3 factors.

- ▶ Bandwidth of the display connector
- ▶ Color depth of the pixels
- ▶ Refresh rate of the monitor

The maximum resolution that can be supported by a specific Quadro FX or Quadro NVS product is directly related to the display connector as well as the various monitor settings.

The following tables list out example of maximum resolutions supported through:

- ▶ The different display connectors (Table 3) present natively on the various Quadro FX and Quadro NVS products.
- ▶ The various display dongles that are supported by the Quadro FX and Quadro NVS products (Table 4).

Table 3. Maximum Resolutions for Native Display Connectors

Display Connector	Maximum Resolution
Single-link DVI	1920 x 1200 at 60 Hz (24 bits per pixel)
Dual-link DVI	2560 x 1600 at 60 Hz (24 bits per pixel) or 1920 x 1080 at 120Hz (24 bits per pixel)
VGA	2048 x 1536 at 85 Hz (24 bits per pixel)
DisplayPort	2560 x 1600 at 60 Hz (30 bits per pixel)

Table 4. Maximum Resolutions for Display Dongles

Dongle Type	Maximum Resolution
DisplayPort to single-link DVI-D	1920 x 1200 at 60 Hz (24 bits per pixel)
DisplayPort to dual-link DVI-D 270 MHz	2560 x 1600 at 60 Hz (24-bits per pixel)
DisplayPort to dual-link DVI-D 330 MHz	1920 x 1080 at 120Hz (24 bits per pixel)
DisplayPort to VGA	1920 x 1200 at 60 Hz (24 bits per pixel)
DVI to VGA	2048 x 1536 at 85 Hz (24-bits per pixel)
DMS59 to 2x DVI-I	1920 x 1200 at 60 Hz (24 bits per pixel)
DMS59 to 2x DisplayPort	2560 x 1600 at 60 Hz (30 bits per pixel)
DMS59 to 2x VGA	2048 x 1536 at 85 Hz (24 bits per pixel)
VHDCI to 4x DVI-D	1920 x 1200 at 60 Hz (24 bits per pixel)
VHDCI to 4x DisplayPort	2560 x 1600 at 60 Hz (30 bits per pixel)

Notice

ALL NVIDIA DESIGN SPECIFICATIONS, REFERENCE BOARDS, FILES, DRAWINGS, DIAGNOSTICS, LISTS, AND OTHER DOCUMENTS (TOGETHER AND SEPARATELY, "MATERIALS") ARE BEING PROVIDED "AS IS." NVIDIA MAKES NO WARRANTIES, EXPRESSED, IMPLIED, STATUTORY, OR OTHERWISE WITH RESPECT TO THE MATERIALS, AND EXPRESSLY DISCLAIMS ALL IMPLIED WARRANTIES OF NONINFRINGEMENT, MERCHANTABILITY, AND FITNESS FOR A PARTICULAR PURPOSE.

Information furnished is believed to be accurate and reliable. However, NVIDIA Corporation assumes no responsibility for the consequences of use of such information or for any infringement of patents or other rights of third parties that may result from its use. No license is granted by implication of otherwise under any patent rights of NVIDIA Corporation. Specifications mentioned in this publication are subject to change without notice. This publication supersedes and replaces all other information previously supplied. NVIDIA Corporation products are not authorized as critical components in life support devices or systems without express written approval of NVIDIA Corporation.

HDMI

HDMI, the HDMI logo, and High-Definition Multimedia Interface are trademarks or registered trademarks of HDMI Licensing LLC.

ROVI Compliance Statement

NVIDIA Products that support Rovi Corporation's Revision 7.1.L1 Anti-Copy Process (ACP) encoding technology can only be sold or distributed to buyers with a valid and existing authorization from ROVI to purchase and incorporate the device into buyer's products.

This device is protected by U.S. patent numbers 6,516,132; 5,583,936; 6,836,549; 7,050,698; and 7,492,896 and other intellectual property rights. The use of ROVI Corporation's copy protection technology in the device must be authorized by ROVI Corporation and is intended for home and other limited pay-per-view uses only, unless otherwise authorized in writing by ROVI Corporation. Reverse engineering or disassembly is prohibited.

OpenCL

OpenCL is a trademark of Apple Inc. used under license to the Khronos Group Inc.

Trademarks

NVIDIA, the NVIDIA logo, and Quadro are trademarks and/or registered trademarks of NVIDIA Corporation in the U.S. and other countries. Other company and product names may be trademarks of the respective companies with which they are associated.

Copyright

© 2010, 2011 NVIDIA Corporation. All rights reserved.