


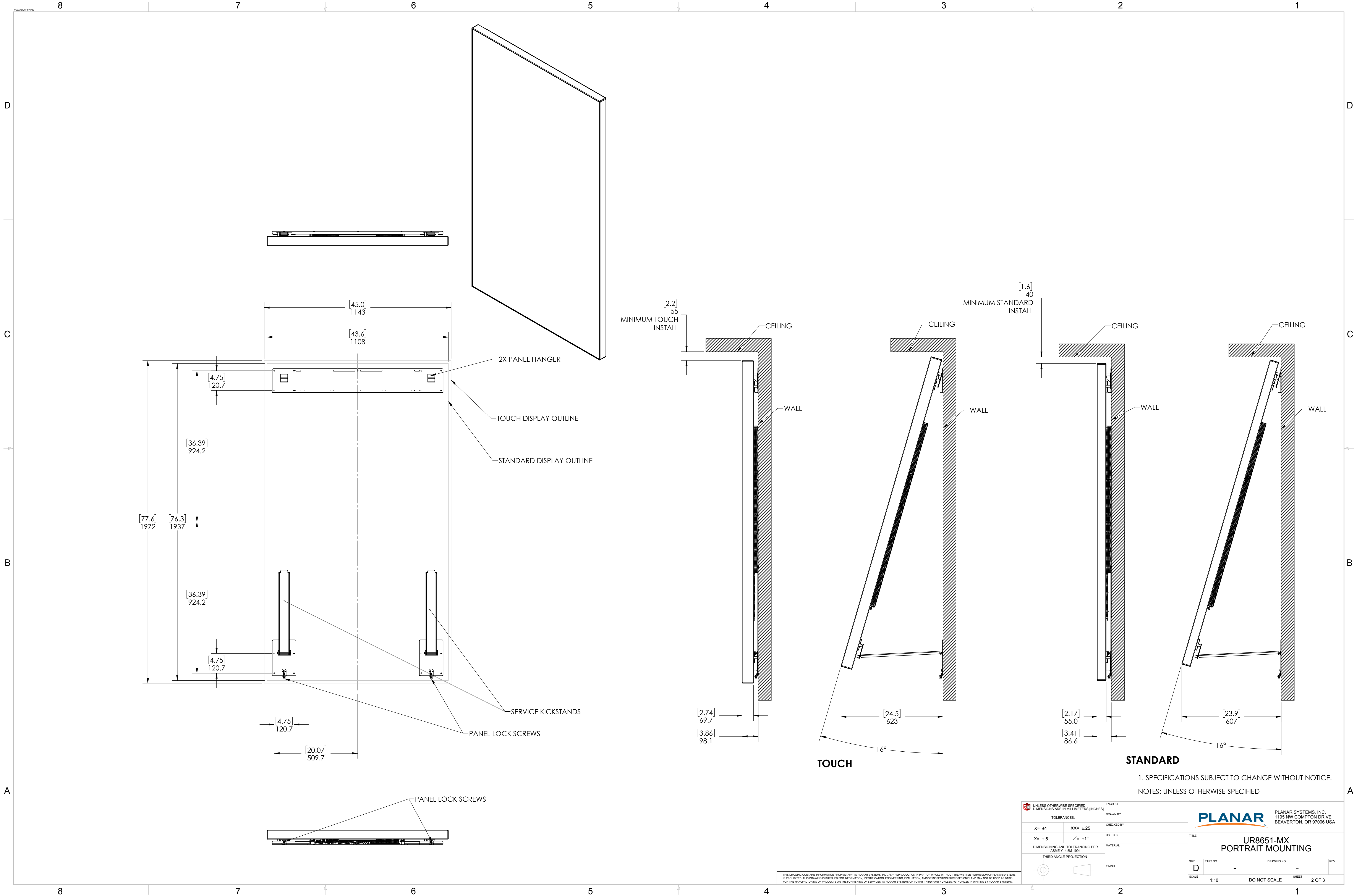


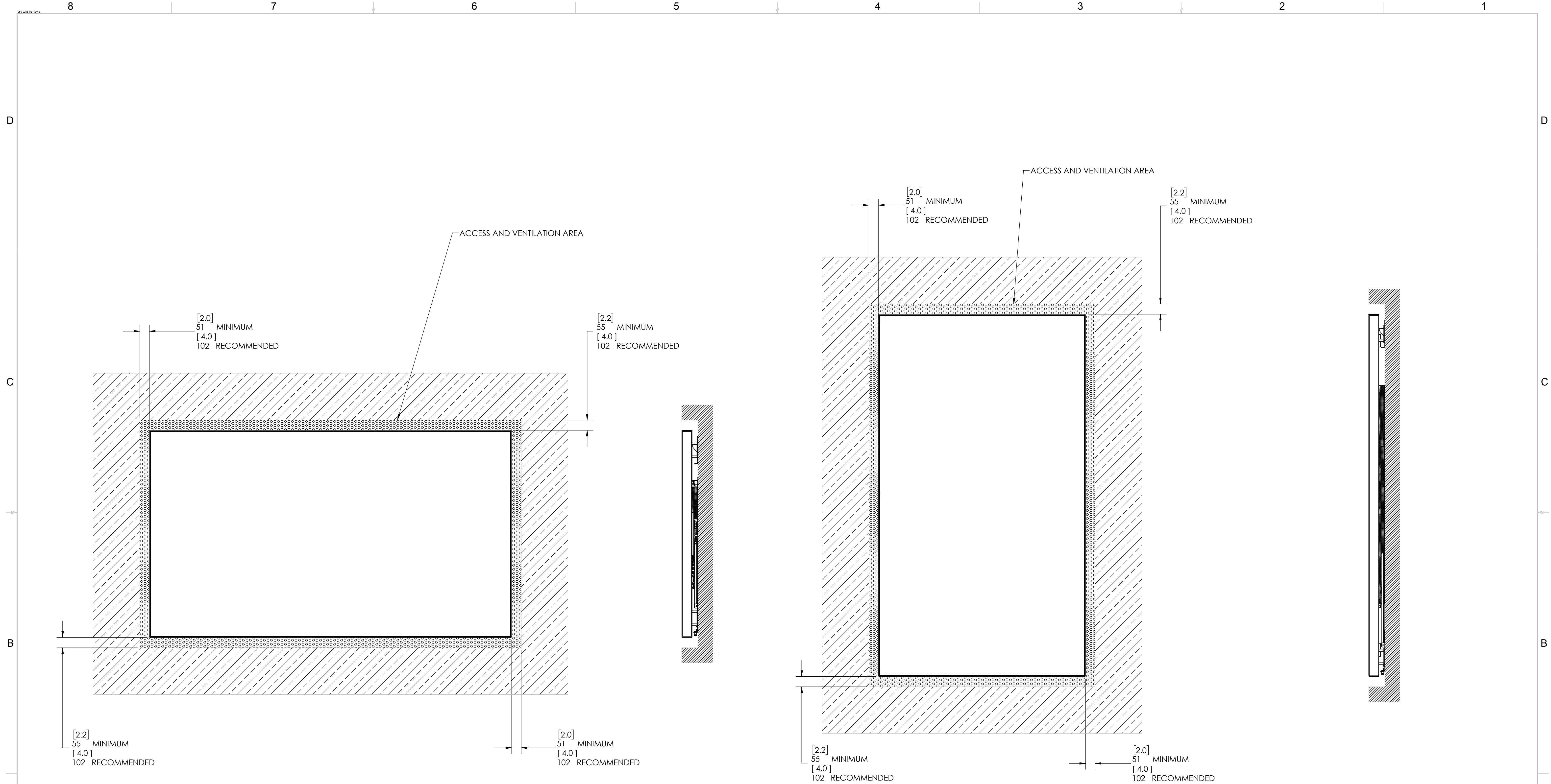
REVISION HISTORY					
ECO	ZONE	REV.	DESCRIPTION	DATE	APPR'D
		01	PRELIMINARY RELEASE	7/25/2016	MTS
		A	RELEASE	8/22/2016	MTS
		B	UPDATED PAGE DESCRIPTION BOXES	12/2/2016	MTS

THIS DRAWING CONTAINS INFORMATION PROPRIETARY TO PLANAR SYSTEMS, INC. ANY REPRODUCTION IN PART OR WHOLE WITHOUT THE WRITTEN PERMISSION OF PLANAR SYSTEMS IS PROHIBITED. THIS DRAWING IS SUPPLIED FOR INFORMATION, IDENTIFICATION, ENGINEERING, EVALUATION, AND/OR INSPECTION PURPOSES ONLY AND MAY NOT BE USED AS BASIS FOR THE MANUFACTURING OF PRODUCTS OR THE FURNISHING OF SERVICES TO PLANAR SYSTEMS OR TO ANY THIRD PARTY UNLESS AUTHORIZED IN WRITING BY PLANAR SYSTEMS.

1. SPECIFICATIONS SUBJECT TO CHANGE WITHOUT NOTICE.  
NOTES: UNLESS OTHERWISE SPECIFIED

 UNLESS OTHERWISE SPECIFIED DIMENSIONS ARE IN MILLIMETERS (INCHES)		ENGINEER BY		 PLANAR SYSTEMS, INC. 1195 NW COMPTON DRIVE BEAVERTON, OR 97006 USA	
TOLERANCES:		DRAWN BY			
X= ±1	XX= ±.25	CHECKED BY		TITLE UR8651-MX LANDSCAPE MOUNTING	
.X= ±.5	∠= ±1°	USED ON			
DIMENSIONING AND TOLERANCING PER ASME Y14.5M-1994		MATERIAL			
THIRD ANGLE PROJECTION		FINISH		SIZE    PART NO.    DRAWING NO.    REV.	
				D    -    -    -	
				SCALE    1:10    DO NOT SCALE    SHEET    1 OF 3	








2. CLEARANCES FOR TOOL ACCESS AND THERMAL CONSIDERATIONS.

- A. GAPS ABOVE AND BELOW THE PANEL MAY BE CLOSED BY A GRID (MIN 50% OPEN AREA) WHICH CAN BE REMOVED FOR SERVICING.
- B. GAPS ON THE LEFT AND RIGHT OF THE PANEL MAY BE CLOSED BY A REMOVABLE SOLID MATERIAL OR GRID MATERIAL.

1. SPECIFICATIONS SUBJECT TO CHANGE WITHOUT NOTICE.

NOTES: UNLESS OTHERWISE SPECIFIED

 UNLESS OTHERWISE SPECIFIED DIMENSIONS ARE IN MILLIMETERS [INCHES]		ENGR BY		 PLANAR SYSTEMS, INC. 1195 NW COMPTON DRIVE BEAVERTON, OR 97006 USA	
TOLERANCES:		DRAWN BY			
$X = \pm 1$	$XX = \pm 25$	CHECKED BY		TITLE  <div>UR8651-MX INSET MOUNTING</div>	
$X = \pm 5$	$\angle = \pm 1^\circ$	USED ON			
DIMENSIONING AND TOLERANCING PER ASME Y14.5M-1994		MATERIAL		SIZE	
THIRD ANGLE PROJECTION		FINISH		PART NO.	
				DRAWING NO.	
				REV	
				SCALE	
				1:10	
				DO NOT SCALE	
				SHEET	
				3 OF 3	

THIS DRAWING CONTAINS INFORMATION PROPRIETARY TO PLANAR SYSTEMS, INC., ANY REPRODUCTION IN PART OR WHOLE WITHOUT THE WRITTEN PERMISSION OF PLANAR SYSTEMS IS PROHIBITED. THIS DRAWING IS SUPPLIED FOR INFORMATION, IDENTIFICATION, ENGINEERING, EVALUATION, AND/OR INSPECTION PURPOSES ONLY AND MAY NOT BE USED AS BASIS FOR THE MANUFACTURING OF PRODUCTS OR THE FURNISHING OF SERVICES TO PLANAR SYSTEMS OR TO ANY THIRD PARTY UNLESS AUTHORIZED IN WRITING BY PLANAR SYSTEMS.