

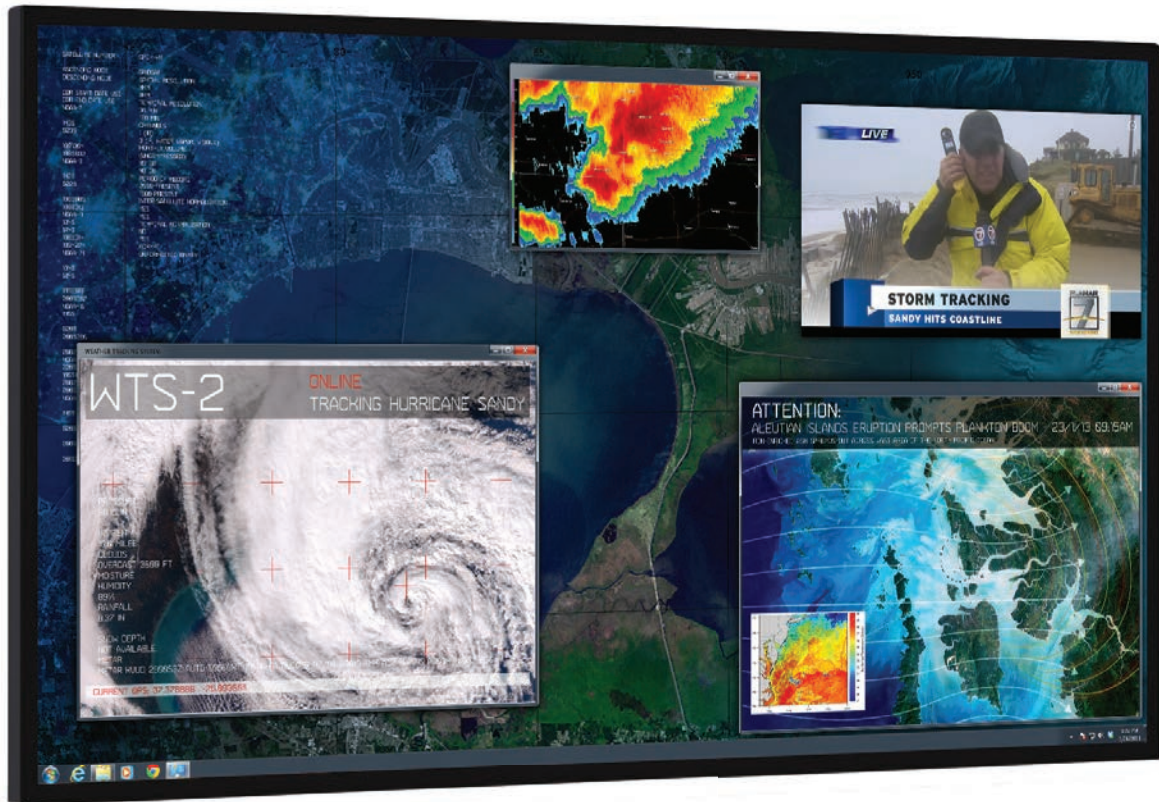
Planar UltraRes 84" 4K 3D-Stereo Touch-Display



PLANARTM

84" 4K 3D-Stereo Touch-Display - Native 8 Megapixels (3840 x 2160)
60hz refresh rate - 4 x Display-Port - Hardware color space calibrateable

Immersive 4K for Professional Applications



4K
4K
4K

Planar® UltraRes™ Series is a family of 84" Ultra HD (3840 x 2160) displays that produce resolution and picture quality not before seen in large format LCD displays. Designed specifically for resolution-rich professional applications, Planar UltraRes Series displays offer the image quality, connectivity, industrial design and configuration options required in these mission-critical environments.

Planar UltraRes Series displays uniquely combine large screen area and high pixel density ideal for group viewing and collaboration around high-resolution visual information in team rooms and conference rooms. In applications such as energy production and distribution, geospatial intelligence, visualization and simulation, engineering design, process control or command center collaboration, the Planar UltraRes Series, deployed either individually or tiled horizontally to create a video wall, provides the ultimate visual display surface.

Optimized for leading resolution-rich commercial applications

Designed inside and out to meet the demanding requirements of professional high resolution visual collaboration.

8 MEGAPIXELS OF PERFECTION

With a native resolution of 3840 x 2160, the Planar UltraRes has four times the resolution and pixel density of a comparably-sized Full HD display. Displaying Ultra HD content, the result produces clarity and detail that appears sharp even at close viewing distances. No detail is missed. A single Planar UltraRes display provides the same resolution and similar screen area to that of a 2x2 narrow bezel LCD video wall, but with no bezels in the display area.

Planar UltraRes incorporates advanced display technology to further enhance image quality. With features such as 120Hz response rate, 10bit color depth, local dimming for enhanced contrast, high brightness panel options and support for full 4K at 60Hz frame rate (because 4x DisplayPort is available), Planar UltraRes provides no-compromise image quality not possible with other display technologies.

BUILT BY PROFESSIONALS, FOR PROFESSIONALS

Planar UltraRes is designed from the ground up for commercial applications. The display incorporates the latest standards in digital video and data capture – 4x HDMI 1.4a and 4x DisplayPort 1.1 – so that multiple 4K sources can be captured, switched between and displayed

in native resolution. The display has been tuned and tested with a range of the most popular professional graphics cards, controllers and content sources in order to make solution deployment easier and more successful for applications, including:

Geospatial

Oil and Gas Exploration and Production

Process Control

Computer Aided Design (CAD)

Architecture

Visualization and Simulation

Medical Imaging

Digital Post-Production

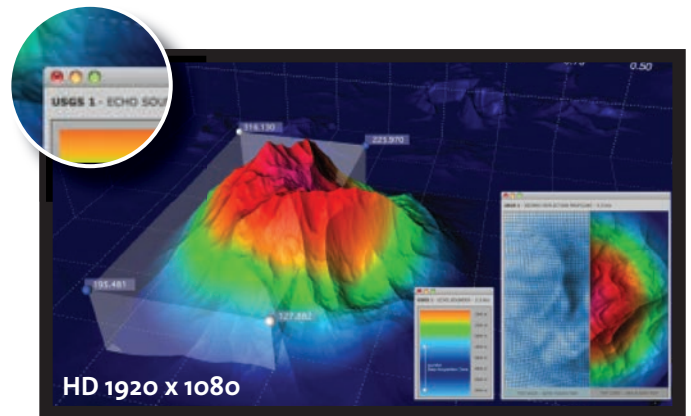
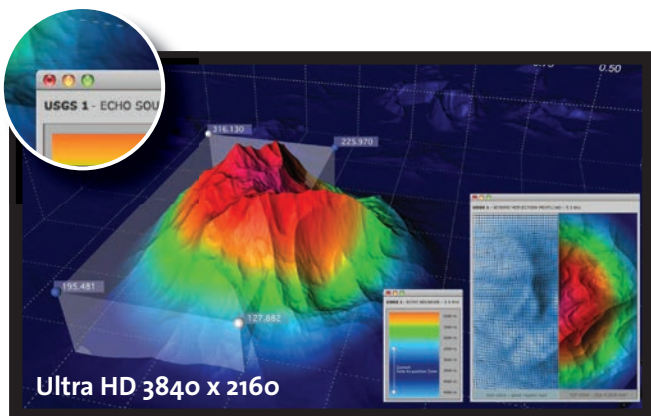
Science – Academic Research and Commercial

Financial Decision Room

Control Room

Collaborative Conference Room or Team Room

Digital Signage



Planar UltraRes has four times the resolution and pixel density of a comparably-sized full HD display.



Three-wide Planar UltraRes using Planar Profile™ Tiling Kit.

4K Touch Experience

Planar UltraRes Series Touch offers the latest in multi-user, multi-touch technology integrated right into the display. Planar UltraRes Series Touch supports 6 simultaneous (21) points of touch with pinpoint accuracy and support for gesture applications across the most popular operating systems. The displays incorporate Planar's ERO™ optically-bonded, low-friction protective glass and are ideal for applications such as white board, annotation, model manipulation, group collaboration and catalogue browsing. Featuring outstanding pixel density, even fine text looks sharp to up-close touch users.



Planar UltraRes Series Touch:

- Multi-user, multi-touch
- 6 touch points, shortly update to 21 touch points
- Annotation, white board, collaboration

CONFIGURABLE TO YOUR ENVIRONMENT

Planar UltraRes is offered in three base models designed to meet different commercial needs. These include the UR8450-LX 350nit version for conference rooms, the UR8450-MX 500nit version that offers greater brightness and supports landscape or portrait installations, and the UR8450-3D 420nit version that can move seamlessly between 2D and passive glasses, continuous stereo 3D.

With the addition of the Planar Profile™ Tiling Kit, two or more Planar UltraRes displays can be tiled horizontally in a way that minimizes the image-to-image gap and that allows the installer to more easily achieve a perfectly flat and uniform multi-display surface. For environments that require more screen real estate, this unique installation approach creates a compelling video wall alternative.



Planar UltraRes 3D version supports passive glasses, continuous stereo 3D as well as 2D.



Planar Profile™ Tiling Kit allows two or more displays to be tiled together for a compelling multi-display surface

Elegant, logo-free design that packs-in innovative and practical features

When paired with the Planar Profile™ Mounting System, Planar UltraRes displays install just over 3" from the wall, making it compliant with the Americans with Disabilities Act, and incorporates a tilt-and-access capability for full front service access, but can also be locked-down for security. The display incorporates a failover power supply design as a standard feature and a modular construction for easy repairs. The Planar UltraRes is fan-less, whisper quiet and incorporates energy-efficient features, such as <math><0.5</math> watt standby mode, auto-off signal detection and the latest generation LED backlight technology.



Planar Profile Mounting System:

- Slim profile (~3" installed) makes display ADA compliant
- Kick-stand tilts display away from the wall for front-service access to electronics
- Lockable for added security

IMMERSIVE 4K FOR DIGITAL SIGNAGE

Planar UltraRes Series displays uniquely combine large screen area and high pixel density ideal for the displaying and viewing of the highest quality, resolution-rich video and still images. In environments such as retail, corporate lobbies or other high-end public spaces, the Planar UltraRes Series, deployed either in landscape, portrait or pedestal modes, provides the ultimate visual display surface on which to communicate brand, ambiance and quality.



Operating mode

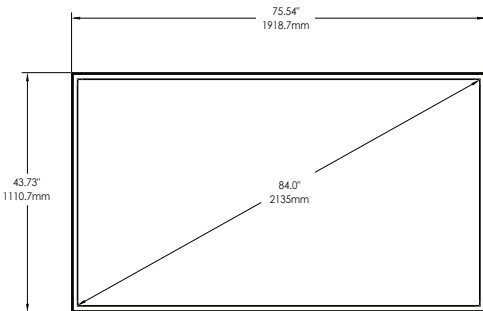
Service access mode

Optional pedestal for free-standing single and double-sided installation

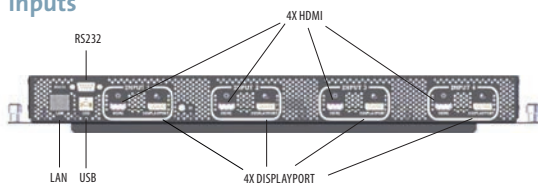
PLANAR ULTRARES SPECIFICATIONS			
	UR8450-LX	UR8450-MX	UR8450-3D
Screen diagonal	84"		
Native Resolution	3840 x 2160		
Display technology	LCD		
Backlight type	LED		
Brightness (maximum)	350 nits	500 nits	420 nits
3D support	No	No	Yes
3D type	N/A	N/A	Passive glasses continuous stereo video
Display orientation	Landscape	Landscape / Portrait	Landscape
Front surface	Low-reflectance/ matte		Anti-reflectance/ gloss
Contrast ratio (dynamic)	500,000:1		
Contrast ratio (full field typical)	1600:1		
Contrast type	Dynamic contrast with local dimming		
Colors	>1 billion colors. Full 10 bit data path		
Internal frame rate	120 Hz		
Response time	5 ms (gray to gray)		
Viewing angle	178 degrees		
Connectivity	4 x DisplayPort 1.1a; 4 x HDMI with Deep Color and 4K support; 1 x RS-232; 1 x LAN; 10/100BaseT; 1 x USB 2.0; 1 x IR		
Modes	1x 3840x2160 @ 24/25/30Hz; 4x 1920x1080 @ 24/25/30/50/60Hz 4x 960x2160 @ 60Hz		
Digital content protection	HDCP compliant		
Acoustic noise	Fanless operation		
Power consumption (typical)	460W		

PLANAR ULTRARES SPECIFICATIONS			
	UR8450-LX	UR8450-MX	UR8450-3D
Power supply failover	Standard		
Standby power	<0.5 W		
Auto-off signal detection	User selectable: on/off		
Line voltage	100 - 240VAC, 50/60Hz		
Operating Temperature	0°C to 40°C, up to 10,000' altitude		
Storage Temperature	-20°C to 60°C		
Operating Humidity	Up to 85% RH, non-condensing		
Control	IR, RS-232, USB, LAN		
Control App/Management	UltraRes™ Control; Web interface; SNMP		
Mounting	VESA mount points (600 x 400); Planar Profile™ Mounting System		
Horizontal tiling	Planar Profile™ tiling kit		
Front Service Access	With Planar Profile™ Mounting System		
Cabinet dimensions (WxH)	75.5" x 43.7" (1918.7mm x 1110.7mm)		
Display depth without mount	3.05" (77.5mm)		
Display depth with mount	3.17" (80.5mm) Americans with Disabilities Act (ADA) compliant		
Bezel width	1.14" (29.1mm) left/right; 1.26" (32.1mm) top/bottom		
Image-to-image gap with tiling kit	1.77" (45mm)		
Weight	180 lbs (82kg)		
Pedestal (Optional)	Portrait-mode single and double sided. Supports UR8450-MX only.		
Floor stand (Optional)	VESA attached		
Safety certifications	FCC Class A, EN55022/CISPR22, ICES-003, EN55024, EN60950-1, CE, cTUVus, EU RoHS		
Warranty	3 year advance exchange. Extendable to 5 years.		

Front



Inputs



TOUCH SPECIFICATIONS

	UR8450-LX	UR8450-MX	UR8450-3D
Touch Points	6 simultaneous		
Response time	7 - 16 ms		
Connectivity source	USB 2.0		
Power to touch system	100 - 240V AC, 50/60Hz		
OS compatibility	Windows 8/7/XP, Mac OS X, Linux		
Cabinet Dimensions with Frame (WxH)	77.34" x 45.27" (1964.4mm x 1149.9mm)		
Display depth without mount	3.71" (94.2 mm)		
Display depth with mount	3.83" (97.3 mm) Americans with Disabilities Act (ADA) compliant		
Touch bezel width	1.95" (49.5 mm)		
Touch display weight	240 lbs (109kg) 240 lbs (109kg)		
Glass	3 mm; Planar's ERO™ Optically-bonded glass		



SCHNEIDER DIGITAL
Josef J. Schneider e.K.

Maxlrainer Straße 10
D-83714 Miesbach

Tel.: +49 (8025) 9930-0
Fax: +49 (8025) 9930-29

www.schneider-digital.com
info@schneider-digital.com

Partner of:

