

# Planar UltraRes Series RS232 User Manual



Copyright © 19 Nov 2015 by Planar Systems, Inc. All rights reserved.  
Contents of this publication may not be reproduced in any form without permission of Planar Systems, Inc.

### Trademark Credits

Windows™ is a trademark of Microsoft Corp.  
All other companies are trademarks or registered trademarks of their respective companies.

### Disclaimer

The information contained in this document is subject to change without notice. Planar Systems, Inc. makes no warranty of any kind with regard to this material. While every precaution has been taken in the preparation of this manual, the Company shall not be liable for errors or omissions contained herein or for incidental or consequential damages in connection with the furnishing, performance, or use of this material.

### Warranty and Service Plans

Planar warranty and service plans will help you maximize your investment by providing great support, display uptime, and performance optimization. From post-sale technical support to a full suite of depot services, our services are performed by trained Planar employees. When you purchase a Planar product, you get more than a display, you get the service and support you need to maximize your investment. To find the latest warranty and service information regarding your Planar product, please visit <http://www.planar.com/support>

### RoHS Compliance Statement

The Planar UltraRes Series is fully RoHS compliant.

Part Number: 020-1298-00

# Contents

<b>RS232 Communication</b> .....	5
Applicable Models .....	5
RS232 Setup .....	5
Connecting the RS232 Cable.....	5
RS232 Protocol.....	6
Command Structure.....	6
Protocol Encoding.....	7
Examples.....	7
RS232 Codes .....	9
Current Zone Layout.....	26
Key.....	27
Timezone .....	29
Sending Serial Commands via USB.....	33
Installing the UltraRes USB drivers.....	33
Using the UltraRes USB Connection .....	39
Sending RS232 Commands Via TCP or UDP.....	40



# RS232 Communication

RS232 control is not necessary for operation, but is a convenient way to control Planar® UltraRes™ Series displays from a computer at a distance. Most things you can do with the remote, you can do with RS232 commands. Plus, you can send inquiries to the displays and find out the current settings and values. RS232 connections are made with standard straight-through cables.

**Note:** Serial communication can occur over RS232, USB-B or LAN.

## Applicable Models

This RS-232 user manual applies to all UltraRes models with the exception of the UR8450 and UR9850 models. The RS232 instructions for the UR8450 and UR9850 models can be found in the User Manual for these models, located at [www.planar.com/support/](http://www.planar.com/support/).

## RS232 Setup

The RS232 connection must use the following settings:

- 19200 baud rate
- 8 data bits
- 1 stop bit
- No parity bit
- No HW (RTS/CTS) or SW (XON/XOFF) flow control

## Connecting the RS232 Cable

The RS232 cable will connect to a PC or control system, depending on your setup.



# RS232 Protocol

## Command Structure

[ OPCODE ] ( MODIFIERS ) [ OPERATOR ] [ OPERANDS ] [ TERM ]

- OPCODE is the command code (e.g. "GAIN"). This can be written either using the named command code (see the "Command Code" column in the table) or the numeric command code (see the "Numeric Command Code" column in the table).
- MODIFIERS are modifier values [e.g. "(ZONE.1, ALL)"]. There are zero or more modifiers for each command. The modifiers can be written either with their named value or their numeric value (see "Examples" on page 7). See the "Modifiers" column in the table.
- OPERATOR is the action to be performed. See the "Operators" column in the table.
  - '=' writes the setting value.
  - '?' reads the setting value in name form (see "Examples" on page 7).
  - '#' reads the setting value in numeric form (see "Examples" on page 7).
  - '+' increments the setting value.
  - '-' decrements the setting value.
  - ':' indicates that the message is a response to one of the following operators: =?#+-
  - '!ERR' indicates that the message is a failure response. An error code will be listed after the "ERR", with a space before it. Error codes are as follows:
    - ERR 1: Invalid syntax
    - ERR 2: [Reserved for future use]
    - ERR 3: Command not recognized
    - ERR 4: Invalid modifier
    - ERR 5: Invalid operands
    - ERR 6: Invalid operator
  - '@ACK' indicates that the message is an acknowledgment (ACK) to a command that has no operator.
  - '^NAK' indicates that the message is a negative acknowledgment (NAK) to a command that has no operator. This indicates that the command was received but cannot be processed at this time.
  - [No operator] denotes an action. In this case, there's no operator and no operand.

- OPERAND indicates the data to be sent with the message. In some cases, there can be multiple operands. See the “Operands” column in the table.
  - Enumerated operands can be written either with their named value or their numeric value (see “Examples” on page 7).
  - String operands are written with quotation marks at the beginning and end. Example: “this is a string operand”.
  - Integer (or signed integer / unsigned integer) are always numeric values.
  - Note that enumerated and integer values can be written either in decimal or hexadecimal. For example, a decimal value of ‘50’ can be written in hexadecimal as ‘0x32’.
- TERM is the termination character for the command. This can either be the ASCII carriage return character (0x0D) or a semicolon. The response will use the same termination character.

## Protocol Encoding

- All parts of the command structure are case insensitive (e.g. “BRIGHTNESS”, “brightness” and BrIghTnEsS” are all the same). Responses will always be in capital letters.
- Excessive white space is allowed (e.g. “BRIGHTNESS=50”, “BRIGHTNESS = 50” and “BRIGHTNESS = 50” are all the same).
- Modifiers and operands can be separated by commas, spaces or both (e.g. “GAIN=100,100,100”, “GAIN=100 100 100” and “GAIN=100, 100, 100” are all the same). Responses will always separate with one space between modifiers and operands).

## Examples

**Note:** [CR] is the ASCII carriage return character (0x0D).

Command	Response	Notes
brightness = 100 [CR]	BRIGHTNESS:100 [CR]	Sets the Brightness value to 100
brightness = 100;	BRIGHTNESS:100;	Also sets the Brightness value to 100, but uses the ‘;’ termination character instead of [CR]. The response uses the same termination character.
200=100 [CR]	200:100 [CR]	“200” is the numeric command code for “BRIGHTNESS”
brightness+ [CR]	BRIGHTNESS:101 [CR]	Increments the current Brightness value
brightness- [CR]	BRIGHTNESS:100 [CR]	Decrements the current Brightness value

Command	Response	Notes
gain = 101 102 103 [CR]	GAIN:101 102 103 [CR]	Example command with multiple operators (sets Red Gain to 101, Green Gain to 102 and Blue Gain to 103, on the current zone)
gain(red)+	GAIN(RED):102	Increments the Red Gain on the current zone
gain(zone.1, all) = 104,105,106	GAIN(ZONE.1 ALL):104 105 106	Example command with multiple modifiers, multiple operators and different separators between the modifiers and operators (sets Red Gain to 104, Green Gain to 105 and Blue Gain to 106, on Zone 1)
ipv4.address(static)="10.15.0.220" [CR]	IPV4.ADDRESS(STATIC)="10.15.0.220" [CR]	Example command with a string operator
reset(user) [CR]	RESET(USER)@ACK [CR]	Example action command (no operator or operand)
reset(user) [CR]	RESET(USER)^NAK [CR]	Example action command that cannot be processed at this time
aspect? [CR]	ASPECT:AUTO [CR]	The name for the Aspect Ratio setting value is returned
aspect# [CR]	ASPECT:0 [CR]	The number for the Aspect Ratio setting value is returned
aspect=fill [CR]	ASPECT:FILL [CR]	Sets the Aspect Ratio to Fill
aspect=3 [CR]	ASPECT:3 [CR]	Also sets the Aspect Ratio to Fill
brightness @@ [CR]	BRIGHTNESS!ERR 1 [CR]	Example of an invalid syntax ("@" isn't a valid operator)
fake.command = 1 [CR]	FAKE.COMMAND:ERR 3 [CR]	Example of an invalid opcode ("FAKE.COMMAND" doesn't exist)
brightness(zone.999) = 100 [CR]	BRIGHTNESS(ZONE.999)!ERR 4 [CR]	Example of an invalid modifier ("ZONE.999" isn't a valid modifier for "BRIGHTNESS")
brightness="new value" [CR]	BRIGHTNESS!ERR 5 [CR]	Example of an invalid operand (the Brightness command doesn't accept a string operand)
model.id = 1 [CR]	MODEL.ID!ERR 6 [CR]	Example of an invalid operator (cannot write to this command)



# RS232 Codes

## Notes:

- The examples are written with the command first and the *response in italics*.  
Example:
  - Command: ASPECT(ZONE.1)=AUTO
  - Response: *ASPECT(ZONE.1):AUTO*
- In many instances, a modifier may be omitted and the display will replace it with a default value. For example, the default modifier for the ASPECT command is CURRENT, so the following two commands are identical:
  - ASPECT(CURRENT)=AUTO
  - ASPECT=AUTO

Setting	Command Code	Numeric Command Code	Operators	Modifiers	Operands	Available in Standby	Example	Notes
Allow Pop Up Messages	OSD.ALLOW.POPUP	1300	=?+-		0 = NO 1 = YES	No	OSD.ALLOW.POPUP=YES <i>OSD.ALLOW.POPUP:YES</i>	See Main -> Advanced Settings -> Menus and Messages -> Allow Pop Up Messages
Aspect Ratio	ASPECT	500	=?+-	Zone 0 = ZONE.1 1 = ZONE.2 2 = ZONE.3 3 = ZONE.4 253 = ALL.INPUT 254 = ALL ALL.ZONE 255 = CURRENT [None = CURRENT]	0 = AUTO 1 = 16X9 2 = 4X3 3 = FILL 4 = NATIVE 5 = LETTERBOX	No	[For Zone 1] ASPECT(ZONE.1)=AUTO <i>ASPECT(ZONE.1):AUTO</i>  [For the current zone] ASPECT=16X9 <i>ASPECT:16X9</i>	See Main -> Image Adjust -> Aspect Ratio
Audio Input	AUDIO.INPUT	1003	?		Source 0 = OPS 1 = HDMI.1 2 = HDMI.2 3 = HDMI.3 4 = HDMI.4 5 = DP	No	AUDIO.INPUT? <i>AUDIO.INPUT:HDMI.1</i>	Returns the input source in the zone currently playing audio, as chosen by Audio Select
Audio Select	AUDIO.ZONE	1007	=?+-		Zone 0 = ZONE.1 1 = ZONE.2 2 = ZONE.3 3 = ZONE.4	No	AUDIO.ZONE=ZONE.1 <i>AUDIO.ZONE:ZONE.1</i>	See Main -> Audio -> Audio Select

Setting	Command Code	Numeric Command Code	Operators	Modifiers	Operands	Available in Standby	Example	Notes
Audio Settings	AUDIO.SETTINGS	1009	=?		Op 1: Zone 0 = ZONE.1 1 = ZONE.2 2 = ZONE.3 3 = ZONE.4  Ops 2-8: Unsigned Integers	No	[For Zone 3, Volume=51, Treble=52, Bass=53, Balance=54, Mute Off, Internal Speakers On] AUDIO.SETTINGS=2 51 52 53 54 0 1 AUDIO.SETTINGS:2 51 52 53 54 0 1	Values are set/returned in the order AUDIO.ZONE, AUDIO.VOLUME, AUDIO.TREBLE, AUDIO.BASS, AUDIO.BALANCE, AUDIO.MUTE, AUDIO.SPEAKERS
Auto Power On	AUTO.ON	1407	=?+-		0 = OFF 1 = ON	Yes	AUTO.ON=ON AUTO.ON:ON	See Main -> Advanced Settings -> Power -> Auto Power On
Auto Scan Sources	SOURCE.SCAN	105	=?+-		0 = OFF 1 = ON	No	SOURCE.SCAN=ON SOURCE.SCAN:ON	See Main -> Inputs and Views -> Auto Scan Sources
Backlight Intensity	BACKLIGHT.INTENSITY	1400	=?+-		1-100	No	BACKLIGHT.INTENSITY=75 BACKLIGHT.INTENSITY:75	See Main -> Advanced Settings -> Backlight -> Backlight Intensity
Balance	AUDIO.BALANCE	1000	=?+-		0-100	No	AUDIO.BALANCE=50 AUDIO.BALANCE:50	See Main -> Audio -> Balance
Bass	AUDIO.BASS	1001	=?+-		0-100	No	AUDIO.BASS=50 AUDIO.BASS:50	See Main -> Audio -> Bass
Blank Screen Color	BLANK.COLOR	1306	=?+-		0 = RED 1 = GREEN 2 = BLUE 3 = CYAN 4 = MAGENTA 5 = YELLOW 6 = WHITE 7 = BLACK	No	BLANK.COLOR=BLUE BLANK.COLOR:BLUE	See Main -> Advanced Settings -> Menus and Messages -> Blank Screen Color
Brightness	BRIGHTNESS	200	=?+-	Zone 0 = ZONE.1 1 = ZONE.2 2 = ZONE.3 3 = ZONE.4 253 = ALL.INPUT 254 = ALL 254 = ALL.ZONE 255 = CURRENT [None = CURRENT]	0-100	No	[For Zone 1] BRIGHTNESS(ZONE.1)=50 BRIGHTNESS(ZONE.1):50  [For the current zone] BRIGHTNESS=55 BRIGHTNESS:55	See Main -> Image Adjust -> Brightness

Setting	Command Code	Numeric Command Code	Operators	Modifiers	Operands	Available in Standby	Example	Notes
Color	COLOR	202	=?+-	Zone 0 = ZONE.1 1 = ZONE.2 2 = ZONE.3 3 = ZONE.4 253 = ALL.INPUT 254 = ALL 254 = ALL.ZONE 255 = CURRENT [None = CURRENT]	0-100	No	[For Zone 1] COLOR(ZONE.1)=50 COLOR(ZONE.1):50  [For the current zone] COLOR=55 COLOR:55	See Main -> Image Adjust -> Color
Color Space	COLORSPACE	207	=?+-	Mod 1: Zone 0 = ZONE.1 1 = ZONE.2 2 = ZONE.3 3 = ZONE.4 253 = ALL.INPUT 254 = ALL 254 = ALL.ZONE 255 = CURRENT  Mod 2: Value Type 0 = SETTING 1 = ACTUAL	0 = REC601 1 = REC709 2 = RGB 3 = RGB.VIDEO 4 = AUTO	No	[Setting Color Space for Zone 1] COLORSPACE(ZONE.1, SETTING)=REC709 COLORSPACE(ZONE.1 SETTING):REC709  [Setting Color Space for the current zone] COLORSPACE(CURRENT, SETTING)=AUTO COLORSPACE(CURRENT SETTING):AUTO  [Reading the actual Color Space for the current zone] COLORSPACE(CURRENT, ACTUAL)? COLORSPACE(CURRENT ACTUAL):RGB	"Setting" is the value that the color space is set to. See Main -> Image Adjust -> Color Space.  "Actual" is the currently applied color space (cannot return AUTO). See Main -> Information -> Image Information -> Color Space.
Color Temperature	COLOR. TEMPERATURE	208	=?+-	Zone 0 = ZONE.1 1 = ZONE.2 2 = ZONE.3 3 = ZONE.4 253 = ALL.INPUT 254 = ALL 254 = ALL.ZONE 255 = CURRENT	0 = 3200K 1 = 5500K 2 = 6500K 3 = 7500K 4 = 9300K 5 = NATIVE	No	[For Zone 1] COLOR.TEMPERATURE(ZONE.1)=6500K COLOR.TEMPERATURE(ZONE.1):6500K  [For the current zone] COLOR.TEMPERATURE=NATIVE COLOR.TEMPERATURE=NATIVE	See Main -> Image Adjust -> Color Temperature

Setting	Command Code	Numeric Command Code	Operators	Modifiers	Operands	Available in Standby	Example	Notes
Contrast	CONTRAST	201	=?+-	Zone 0 = ZONE.1 1 = ZONE.2 2 = ZONE.3 3 = ZONE.4 253 = ALL.INPUT 254 = ALL 254 = ALL.ZONE 255 = CURRENT [None = CURRENT]	0-100	No	[For Zone 1] CONTRAST(ZONE.1)=50 CONTRAST(ZONE.1):50  [For the current zone] CONTRAST=55 CONTRAST:55	See Main -> Image Adjust -> Contrast
Current Zone	CURRENT.ZONE	100	=?+-		Zone 0 = ZONE.1 1 = ZONE.2 2 = ZONE.3 3 = ZONE.4	No	CURRENT.ZONE=ZONE.1 CURRENT.ZONE:ZONE.1	See Main -> Image Adjust -> Current Zone
Current Zone Layout	CURRENT.ZONE.LAYOUT	108	?		0 = S.1 1 = P.UL.1 2 = P.UL.2 3 = P.UR.1 4 = P.UR.2 5 = P.LL.1 6 = P.LL.2 7 = P.LR.1 8 = P.LR.2 9 = D.L.1 10 = D.L.2 11 = D.T.1 12 = D.T.2 13 = T.L.1 14 = T.L.2 15 = T.L.3 16 = T.R.1 17 = T.R.2 18 = T.R.3 19 = T.T.1 20 = T.T.2 21 = T.T.3 22 = T.B.1 23 = T.B.2 24 = T.B.3 25 = T.M.1 26 = T.M.2 27 = T.M.3 28 = Q.1 29 = Q.2 30 = Q.3 31 = Q.4	No	CURRENT.ZONE.LAYOUT? CURRENT.ZONE.LAYOUT:Q.1	See separate table on page 26 for operands

Setting	Command Code	Numeric Command Code	Operators	Modifiers	Operands	Available in Standby	Example	Notes
Default Gateway	IPV4.GATEWAY	1206	=?	0 = STATIC [None = Current (for reads only)] [None = STATIC (for writes only)]	String	Yes	[Read the current default gateway value] IPV4.GATEWAY? <i>IPV4.NETMASK:"10.15.0.1"</i>  [Write the default gateway for static IP] IPV4.NETMASK(STATIC)="192.168.12.1" <i>IPV4.NETMASK(STATIC):"192.168.12.1"</i>	See Main -> Advanced Settings -> Network -> Default Gateway
DHCP	NETWORK.DHCP	1207	=?		0 = OFF 1 = ON	Yes	NETWORK.DHCP=ON <i>NETWORK.DHCP:ON</i>	See Main -> Advanced Settings -> Network -> DHCP
Diagnostic Color	DIAGNOSTIC.COLOR	206	=?+-	Zone 0 = ZONE.1 1 = ZONE.2 2 = ZONE.3 3 = ZONE.4 253 = ALL.INPUT 254 = ALL 255 = ALL.ZONE [None = CURRENT] [None = CURRENT]	0 = RED 1 = GREEN 2 = BLUE 255 = OFF	No	[For Zone 1] DIAGNOSTIC.COLOR(ZONE.1)=OFF <i>DIAGNOSTIC.COLOR(ZONE.1):OFF</i>  [For the current zone] DIAGNOSTIC.COLOR=BLUE <i>DIAGNOSTIC.COLOR:BLUE</i>	See Main -> Image Adjust -> Diagnostic Color
Display Power	DISPLAY.POWER	1408	=?+-		0 = OFF 1 = ON	Yes	DISPLAY.POWER=ON <i>DISPLAY.POWER:ON</i>	See the IR remote control keys ON and OFF
DisplayPort Type	DP.TYPE	1904	=?+-		0 = 1.1 1 = 1.2	No	DP.TYPE=1.2 <i>DP.TYPE:1.2</i>	See Main -> Advanced Settings -> System Settings -> DisplayPort Type
DNS Server 1	NETWORK.DNS1	1212	=?	0 = STATIC [None = Current (for reads only)] [None = STATIC (for writes only)]	String	Yes	[Read the current DNS server 1 value] NETWORK.DNS1? <i>NETWORK.DNS1:"172.16.0.140"</i>  [Write the DNS server 1 for static IP] NETWORK.DNS1(STATIC)="8.8.8.8" <i>NETWORK.DNS1(STATIC):"8.8.8.8"</i>	See Main -> Advanced Settings -> Network -> DNS Server
DNS Server 2	NETWORK.DNS2	1213	=?	0 = STATIC [None = Current (for reads only)] [None = STATIC (for writes only)]	String	Yes	[Read the current DNS server 2 value] NETWORK.DNS2? <i>NETWORK.DNS2:"172.16.0.191"</i>  [Write the DNS server 2 for static IP] NETWORK.DNS2(STATIC)="8.8.4.4" <i>NETWORK.DNS2(STATIC):"8.8.4.4"</i>	Selects a secondary DNS server

Setting	Command Code	Numeric Command Code	Operators	Modifiers	Operands	Available in Standby	Example	Notes
EDID Timing	EDID.TIMING	400	=?+!	Mod 1: Input 0 = OPS 1 = HDMI.1 2 = HDMI.2 3 = HDMI.3 4 = HDMI.4 5 = DP 6 = ALL  Mod 2: Param 0 = UPDATE 1 = HACTIVE 2 = VACTIVE 3 = VREFRESH 4 = FULL.SPEC 5 = PCLK 6 = HBLANK 7 = HFP 8 = HSYNC 9 = VBLANK 10 = VFP 11 = VSYNC 12 = FACTORY 13 = TYPE	Signed Integer -3 = 4K60 -2 = 4K30 -1 = 1080P	No	[Read the EDID type for HDMI 1] EDID.TIMING(HDMI.1, TYPE)? EDID.TIMING(HDMI.1 TYPE):4K60  [Set the HDMI 2 EDID horizontal active to 3840] EDID.TIMING(HDMI.2, HACTIVE)=3840 EDID.TIMING(HDMI.2 HACTIVE):3840  [Update the HDMI 2 EDID] EDID.TIMING(HDMI.2, UPDATE) EDID.TIMING(HDMI.2 UPDATE)@ACK	See Main -> Advanced Settings -> EDID  UPDATE modifier is the only one that supports the action operator
EDID Zone	EDID.SELECTEDCONNECTOR	401	=?+-		0 = OPS 1 = HDMI.1 2 = HDMI.2 3 = HDMI.3 4 = HDMI.4 5 = DP 6 = ALL	No	EDID.SELECTEDCONNECTOR=HDMI.1 EDID.SELECTEDCONNECTOR:HDMI.1	See Main -> Advanced Settings -> EDID -> Selected Connector
Enable Internal Speakers	AUDIO.SPEAKERS	1004	=?+-		0 = OFF 1 = ON	No	AUDIO.SPEAKERS=ON AUDIO.SPEAKERS:ON	See Main -> Audio -> Enable Internal Speakers
Error Log	ERROR.LOG	2311	?	Log Entry Number 1-65535		No	ERROR.LOG(1)? ERROR.LOG(1):"Wed Sep 16 13:39:33 2015 - CRIT- Power supply 2 issue"	Lists any faults that have occurred in the system. Entry #1 is the most recent. An empty string returned means that there are no more error log entries after that entry.
Factory Reset	RESET	2400	!	0 = USER 1 = FACTORY1		No	RESET(USER) RESET(USER)@ACK	USER is the same as Main -> Advanced Settings -> System Settings -> Factory Reset.  FACTORY1 resets everything that USER resets plus EDID customizations, network settings and presets.

Setting	Command Code	Numeric Command Code	Operators	Modifiers	Operands	Available in Standby	Example	Notes
Firmware Update	FIRMWARE.UPDATE	2200	=?!	Mod 1: Firmware 0 = AUTO 1 = VP.AP 2 = HDMI  Mod 2: Type 0 = START 1 = PACKET 2 = FINISH 3 = URL	String	Yes	FIRMWARE.UPDATE FIRMWARE.UPDATE(AUTO START)@ACK	See Main -> Advanced Settings -> System Settings -> Firmware Update
Gain	GAIN	209	=?+-	Mod 1: Zone 0 = ZONE.1 1 = ZONE.2 2 = ZONE.3 3 = ZONE.4 253 = ALL.INPUT 254 = ALL 254 = ALL.ZONE 255 = CURRENT [None = CURRENT]  Mod 2: Color 0 = RED 1 = GREEN 2 = BLUE 255 = ALL [None = ALL]	For RED, GREEN and BLUE modifiers, one operand: 0-200  For ALL operand, three operands: Red Gain: 0-200 Green Gain: 0-200 Blue Gain: 0-200	No	[For red gain on Zone 1] GAIN(ZONE.1, RED)=100 GAIN(ZONE.1 RED):100  [For all three gains on the current zone: Red Gain = 101, Green Gain = 102, Blue Gain = 103] GAIN=101 102 103 GAIN=101 102 103	See Main -> Image Adjust -> Red/Green/Blue Gain.  ALL modifier adjusts all three gains at the same time.  The first modifier can only be missing if both modifiers are missing.

Setting	Command Code	Numeric Command Code	Operators	Modifiers	Operands	Available in Standby	Example	Notes
Gamma	GAMMA	1504	=?+-	Zone 0 = ZONE.1 1 = ZONE.2 2 = ZONE.3 3 = ZONE.4 253 = ALL.INPUT 254 = ALL 254 = ALL.ZONE 255 = CURRENT [None = CURRENT]	0 = 1.5 1 = 1.55 2 = 1.6 3 = 1.65 4 = 1.7 5 = 1.75 6 = 1.8 7 = 1.85 8 = 1.9 9 = 1.95 10 = 2.0 11 = 2.05 12 = 2.1 13 = 2.15 14 = 2.2 15 = 2.25 16 = 2.3 17 = 2.35 18 = 2.4 19 = 2.45 20 = 2.5 21 = 2.55 22 = 2.6 23 = 2.65 24 = 2.7 25 = 2.75 26 = 2.8	No	[For Zone 1] GAMMA(ZONE.1)=2.2 GAMMA(ZONE.1):2.2  [For the current zone] GAMMA=2.5 GAMMA:2.5	See Main -> Image Adjust -> Gamma
Help	HELP	2300	=?	0 = FIRST 2147483647 = NEXT	String	Yes	[To get help on the OSD.STATUS command] HELP=OSD.STATUS HELP:"OSD.STATUS" <i>Numeric Value: 1308</i> <i>Operators: ?</i> <i>No Modifiers</i> <i>1 Operand(s)</i> <i>Operand #1: Unsigned Integer</i> DISABLE 0 ENABLE 1 OFF 0 ON 1 NO 0 YES 1 FALSE 0 TRUE 1 "	Displays information for each serial command.  To get a list of all serial commands, first enter the following command: HELP(FIRST)?  Then enter the following command continuously until it returns NAK: HELP(NEXT)?



Setting	Command Code	Numeric Command Code	Operators	Modifiers	Operands	Available in Standby	Example	Notes
Image Information	SIGNAL.INFO	300	?	Mod 1: Zone 0 = ZONE.1 1 = ZONE.2 2 = ZONE.3 3 = ZONE.4 255 = CURRENT [None = CURRENT]  Mod 2: Parameter 0 = HACTIVE 1 = VACTIVE 2 = PCLK 3 = HTOTAL 4 = VTOTAL 5 = VREFRESH 6 = HREFRESH 7 = INTERLACE 8 = VFRAMERATE [None = ALL]	Unsigned Integer	No	SIGNAL.INFO(CURRENT, HACTIVE)? SIGNAL.INFO(CURRENT, HACTIVE):1920	See Main -> Information -> Image Information
Image Position	PAN	502	=?+-	Mod 1: Zone 0 = ZONE.1 1 = ZONE.2 2 = ZONE.3 3 = ZONE.4 253 = ALL.INPUT 254 = ALL 254 = ALL.ZONE 255 = CURRENT  Mod 2: Direction 0 = X 1 = Y 255 = ALL [None = ALL]	-1000 ~ 1000	No	[For horizontal position on Zone 1] PAN(ZONE.1, X)=0 PAN(ZONE.1, X):0  [For horizontal and vertical position on the current zone: Horizontal Position = 10, Vertical Position = 20] PAN(CURRENT)=10 20 PAN(CURRENT)=10 20	For the 'X' modifier, see Main -> Image Adjust -> Image Position -> Move Horizontal.  For the 'Y' modifier, see Main -> Image Adjust -> Image Position -> Move Vertical.
IP Address	IPV4.ADDRESS	1205	=?	0 = STATIC [None = Current (for reads only)] [None = STATIC (for writes only)]	String	Yes	[Read the current IP address value] NETWORK.DNS1? NETWORK.DNS1:"10.15.0.60"  [Write the DNS server 1 for static IP] NETWORK.DNS1(STATIC)="192.168.12.12" NETWORK.DNS1(STATIC):"192.168.12.12"	See Main -> Advanced Settings -> Network -> IP Address
IR Remote Lock	IR.LOCK	1202	=?		0 = DISABLE 1 = ENABLE	Yes	IR.LOCK=ENABLE IR.LOCK:ENABLE	See Menu -> Advanced Settings -> System Settings -> IR Remote Lock

Setting	Command Code	Numeric Command Code	Operators	Modifiers	Operands	Available in Standby	Example	Notes
Key	KEY	1200	=		[See separate table]	Yes	[To send the MENU key] KEY=MENU KEY:MENU	See separate table on page 27 for key codes
Keypad Lock	KEY.LOCK	1201	=?		0 = DISABLE 1 = ENABLE	Yes	KEY.LOCK=ENABLE KEY.LOCK:ENABLE	See Menu -> Advanced Settings -> System Settings -> Keypad Lock
Layout	LAYOUT	103	=?+-	Multi-Source View 1 = DUAL 2 = TRIPLE 4 = PIP 5 = CURRENT [None = CURRENT]	0 = SINGLE 1 = PIP.UL 2 = PIP.UR 3 = PIP.LL 4 = PIP.LR 5 = DUAL.L 6 = DUAL.T 7 = TRIPLE.L 8 = TRIPLE.R 9 = TRIPLE.T 10 = TRIPLE.B 11 = TRIPLE.M 12 = QUAD	No	[To change the Dual layout to top-and-bottom] LAYOUT(DUAL)=DUAL.T LAYOUT(DUAL):DUAL.T  [To change the PIP position to top left and immediately apply the Multi-Source View and layout] LAYOUT=PIP.UL LAYOUT:PIP.UL	See Main -> Inputs and Views -> Multi-Source View  See Main -> Inputs and Views -> Multi-Source View -> Advanced Layouts
Local Dimming	LOCAL.DIMMING	1415	=?+-		0 = OFF 1 = ON	No	LOCAL.DIMMING=ON LOCAL.DIMMING:ON	See Main -> Advanced Settings -> Backlight -> Local Dimming
MAC Address	NETWORK.MAC	1203	?		String	Yes	NETWORK.MAC? NETWORK.MAC="12:34:56:AB:CD:EF"	See Main -> Advanced Settings -> Network -> MAC Address
MEMC	MEMC.LEVEL	1503	=?+-		0 = OFF 1 = LOW 2 = MEDIUM 3 = HIGH	No	MEMC.LEVEL=LOW MEMC.LEVEL:LOW	See Main -> Advanced Settings -> System Settings -> MEMC
Menu Position	OSD.POSITION	1301	=?+-		0 = CENTER 1 = UPPER.LEFT 2 = UPPER.RIGHT 3 = LOWER.LEFT 4 = LOWER.RIGHT	No	OSD.POSITION=CENTER OSD.POSITION:CENTER	See Main -> Advanced Settings -> Menus and Messages -> Menu Position
Model ID	MODEL.ID	2306	?		String	No	MODEL.ID? MODEL.ID="UR8451"	See Main -> Information -> System Information -> Model
Multi-Source View	MULTI.VIEW	102	=?+-		0 = SINGLE 1 = DUAL 2 = TRIPLE 3 = QUAD 4 = PIP	No	MULTI.VIEW=QUAD MULTI.VIEW:QUAD	See Main -> Inputs and Views -> Multi-Source View
Mute	AUDIO.MUTE	1002	=?+-		0 = OFF 1 = ON	No	AUDIO.MUTE=ON AUDIO.MUTE:ON	See Main -> Audio -> Mute
Network Ping	NETWORK.PING	1211	=		String	Yes	NETWORK.PING="www.google.com" NETWORK.PING:"SUCCESS"	Attempts to ping the selected network address. Response string will either be "SUCCESS" or "FAILED"

Setting	Command Code	Numeric Command Code	Operators	Modifiers	Operands	Available in Standby	Example	Notes
Next Source	SOURCE.NEXT	104	!	Zone 0 = ZONE.1 1 = ZONE.2 2 = ZONE.3 3 = ZONE.4 254 = ALL 255 = CURRENT		No	[For Zone 1] SOURCE.NEXT(ZONE.1) SOURCE.NEXT(ZONE.1)@ACK  [For the current zone] SOURCE.NEXT SOURCE.NEXT@ACK	See IR remote control keys ZONE 1/2/3/4
Noise Reduction	NOISE.REDUCTION	205	=?+-	Zone 0 = ZONE.1 1 = ZONE.2 2 = ZONE.3 3 = ZONE.4 253 = ALL.INPUT 254 = ALL 254 = ALL.ZONE 255 = CURRENT [None = CURRENT]	0 = OFF 1 = LOW 2 = MEDIUM 3 = HIGH	No	[For Zone 1] NOISE.REDUCTION(ZONE.1)=OFF NOISE.REDUCTION(ZONE.1):OFF  [For the current zone] NOISE.REDUCTION=LOW NOISE.REDUCTION:LOW	See Main -> Image Adjust -> Noise Reduction
NTP Server	NETWORK.NTPSERVER	1214	=?		String	Yes	NETWORK.NTPSERVER="pool.ntp.org" NETWORK.NTPSERVER:"pool.ntp.org"	Selects the NTP server to be used with the Use Network Time setting.  Default = "0.pool.ntp.org"
Offset	OFFSET	210	=?+-	Mod 1: Zone 0 = ZONE.1 1 = ZONE.2 2 = ZONE.3 3 = ZONE.4 253 = ALL.INPUT 254 = ALL 254 = ALL.ZONE 255 = CURRENT [None = CURRENT]  Mod 2: Color 0 = RED 1 = GREEN 2 = BLUE 255 = ALL [None = ALL]	For RED, GREEN and BLUE modifiers, one operand: 0-100  For ALL operand, three operands: Red Offset: 0-100 Green Offset: 0-100 Blue Offset: 0-100	No	[For red offset on Zone 1] OFFSET(ZONE.1, RED)=50 OFFSET(ZONE.1 RED):50  [For all three offsets on the current zone: Red Gain = 51, Green Gain = 52, Blue Gain = 53] OFFSET=51 52 53 OFFSET=51 52 53	See Main -> Image Adjust -> Red/Green/Blue Offset.  ALL modifier adjusts all three offsets at the same time.  The first modifier can only be missing if both modifiers are missing.
OPS Power Down Check	OPS.POWER.CHECK	1901	=?		0 = DISABLE 1 = ENABLE	Yes	OPS.POWER.CHECK=ENABLE OPS.POWER.CHECK:ENABLE	See Main -> Advanced Settings -> Power -> OPS Power Down Check

Setting	Command Code	Numeric Command Code	Operators	Modifiers	Operands	Available in Standby	Example	Notes
OSD Close	OSD.CLOSE	1310	!			No	OSD.CLOSE <i>OSD.CLOSE@ACK</i>	Forces any menus or message boxes that are currently on screen to close
OSD Rotation	ORIENTATION	1302	=?+-		0 = LANDSCAPE 1 = PORTRAIT	No	ORIENTATION=LANDSCAPE <i>ORIENTATION:LANDSCAPE</i>	See Main -> Advanced Settings -> Menus and Messages -> OSD Rotation
OSD Status	OSD.STATUS	1308	?		0 = DISABLE 1 = ENABLE	No	OSD.STATUS? <i>OSD.STATUS=ENABLE</i>	Indicates whether the OSD (menu, message box or confirmation dialog) is currently being shown on the display
OSD Timeout	OSD.TIMEOUT	1304	=?+-		0 = OFF 10 = 10.SECONDS 30 = 30.SECONDS 60 = 60.SECONDS 120 = 120.SECONDS 240 = 240.SECONDS	No	OSD.TIMEOUT=60.SECONDS <i>OSD.TIMEOUT:60.SECONDS</i>	See Main -> Advanced Settings -> Menus and Messages -> OSD Timeout.  Numeric value is in seconds and can be used to program any delay value.
OSD Transparency	OSD.TRANSPARENCY	1303	=?+-		0-5	No	OSD.TRANSPARENCY=3 <i>OSD.TRANSPARENCY:3</i>	See Main -> Advanced Settings -> Menus and Messages -> OSD Transparency
Overscan	OVERSCAN	501	=?+-	Zone 0 = ZONE.1 1 = ZONE.2 2 = ZONE.3 3 = ZONE.4 253 = ALL.INPUT 254 = ALL 254 = ALL.ZONE 255 = CURRENT [None = CURRENT]	0-20	No	[For Zone 1] OVERSCAN(ZONE.1)=0 <i>OVERSCAN(ZONE.1):0</i>  [For the current zone] OVERSCAN=5 <i>OVERSCAN:5</i>	See Main -> Image Adjust -> Overscan
PIP Size	PIP.SIZE	107	=?+-		0 = SMALL 1 = MEDIUM 2 = LARGE	No	PIP.SIZE=MEDIUM <i>PIP.SIZE:MEDIUM</i>	See Main -> Inputs and Views -> Multi-Source View -> Advanced Layouts -> PIP Size
PIP Swap	PIP.SWAP	106	!			No	PIP.SWAP <i>PIP.SWAP@ACK</i>	See IR remote control key PIP SWAP

Setting	Command Code	Numeric Command Code	Operators	Modifiers	Operands	Available in Standby	Example	Notes
Power Saving Delay	POWER.SAVE.DELAY	1406	=?+-		60 = 1.MINUTE 300 = 5.MINUTES 900 = 15.MINUTES 1800 = 30.MINUTES 3600 = 60.MINUTES	Yes	POWER.SAVE.DELAY=5.MINUTES <i>POWER.SAVE.DELAY:5.MINUTES</i>	See Main -> Advanced Settings -> Power -> Power Saving Delay.  Numeric value is in seconds and can be used to program any delay value.
Power Saving Mode	POWER.SAVE.MODE	1405	=?+-		0 = DISABLED 1 = LOW.POWER 2 = WAKE.ON.SIGNAL	Yes	POWER.SAVE.MODE=LOW.POWER <i>POWER.SAVE.MODE:LOW.POWER</i>	See Main -> Advanced Settings -> Power -> Power Saving Mode
Preset Delete	PRESET.DELETE	2000	!	Preset Number 1-1000		No	[Save to Preset 4] PRESET.DELETE(4) <i>PRESET.DELETE(4)@ACK</i>	See Main -> Presets -> Delete
Preset Full	PRESET.FULL	2004	?	Preset Number 1-1000	0 = NO 1 = YES	No	PRESET.FULL(4)? <i>PRESET.FULL(4)=YES</i>	Indicates whether data has been saved in the selected preset
Preset Name	PRESET.NAME	2003	=?	Preset Number 1-1000	String	No	[Set Preset 4 name to "Hello"] PRESET.NAME(4)="Hello" <i>PRESET.NAME(4):"Hello"</i>	Sets the name listed for the preset in the Delete, Recall and Save menus.  Default = "Preset n", where 'n' is the preset number (e.g. "Preset 4")
Preset Recall	PRESET.RECALL	2001	!	Preset Number 1-1000		No	[Save to Preset 4] PRESET.RECALL(4) <i>PRESET.RECALL(4)@ACK</i>	See Main -> Presets -> Recall
Preset Save	PRESET.SAVE	2002	!	Preset Number 1-1000		No	[Save to Preset 4] PRESET.SAVE(4) <i>PRESET.SAVE(4)@ACK</i>	See Main -> Presets -> Save
Reboot	SYSTEM.REBOOT	2402	!			No	SYSTEM.REBOOT <i>SYSTEM.REBOOT@ACK</i>	Forces the system to restart
Schedule	SCHEDULE	2100	=?	Mod 1: Slot 1-20  Mod 2: Parameter 0 = FREQ 1 = MINUTE 2 = HOUR 3 = DAY 4 = ACTION 5 = DATA 6 = ENABLE [None = ALL]	Unsigned int	Yes	[Change the action for event 3 to Turn On] SCHEDULE(3, ACTION)=0 <i>SCHEDULE(3, ACTION):0</i>	See Main -> Advanced Settings -> Schedule -> Set Event 1-20  Reference the Schedule Action, Schedule Day and Schedule Frequency settings for operand values.
Schedule Action	SCHEDULE.ACTION	2102	=?	Slot 1-20	0 = TURN.ON 1 = TURN.OFF 2 = RECALL 3 = BACKLIGHT	Yes	[Change the action for event 3 to Turn On] SCHEDULE.ACTION(3)=TURN.ON <i>SCHEDULE.ACTION(3):TURN.ON</i>	See Main -> Advanced Settings -> Schedule -> Set Event 1-20 -> Action

Setting	Command Code	Numeric Command Code	Operators	Modifiers	Operands	Available in Standby	Example	Notes
Schedule Day	SCHEDULE.DAY	2101	=?	Slot 1-20	0 = MON 1 = TUE 2 = WED 3 = THU 4 = FRI 5 = SAT 6 = SUN	Yes	[Change the day for event 3 to Monday] SCHEDULE.DAY(3)=MON SCHEDULE.DAY(3):MON	See Main -> Advanced Settings -> Schedule -> Set Event 1-20 -> Day
Schedule Description	SCHEDULE.DESCRPTION	2104	?	Slot 1-20	String	Yes	[Read the schedule description string for event 3] SCHEDULE.DESCRPTION(3)? SCHEDULE.DESCRPTION(3):"Daily 08:15 Backlight 25"	This is the string used for the schedule slots in the Main -> Advanced Settings -> Schedule menu.
Schedule Frequency	SCHEDULE.FREQUENCY	2103	=?	Slot 1-20	0 = DAILY 1 = WEEKLY 2 = WEEKDAYS 3 = WEEKENDS	Yes	[Change the frequency for event 3 to Daily] SCHEDULE.FREQUENCY(3)=DAILY SCHEDULE.FREQUENCY(3):DAILY	See Main -> Advanced Settings -> Schedule -> Set Event 1-20 -> Frequency
Serial Device	SERIAL.DEVICE	1220	=?	Mod 1: Port 0 = DB9 1 = USB 2 = OPS  Mod 2: Setting 0 = BAUD	String	No	SERIAL.DEVICE(DB9, BAUD)="19200" SERIAL.DEVICE(DB9 BAUD):"19200"	Changes the serial parameters for the various serial connections: - "DB9" is the RS232 connector - "USB" is the USB-B connector - "OPS" is the serial connection on the OPS connector
Serial Number	SERIAL.NUMBER	2303	?		String	No	SERIAL.NUMBER? SERIAL.NUMBER="ABCD1234"	See Main -> Information -> System Information -> Serial Number
Sharpness	SHARPNESS	204	=?+-	Zone 0 = ZONE.1 1 = ZONE.2 2 = ZONE.3 3 = ZONE.4 253 = ALL.INPUT 254 = ALL 254 = ALL.ZONE 255 = CURRENT [None = CURRENT]	0-100	No	[For Zone 1] SHARPNESS(ZONE.1)=5 SHARPNESS(ZONE.1):5  [For the current zone] SHARPNESS=10 SHARPNESS:10	See Main -> Image Adjust -> Sharpness
Source Message	SOURCE.MESSAGE	111	?	Zone 0 = ZONE.1 1 = ZONE.2 2 = ZONE.3 3 = ZONE.4 255 = CURRENT [None = CURRENT]	String	No	[For Zone 1] SOURCE.MESSAGE(ZONE.1)? SOURCE.MESSAGE(ZONE.1):"1920x1080i 60Hz"  [For the current zone] SOURCE.MESSAGE? SOURCE.MESSAGE:"Searching"	Returns a string with the input resolution and frame rate for the selected zone. If no signal is detected in that zone, the string will read "Searching".

Setting	Command Code	Numeric Command Code	Operators	Modifiers	Operands	Available in Standby	Example	Notes
Source Select	SOURCE.SELECT	101	=?+-	Zone 0 = ZONE.1 1 = ZONE.2 2 = ZONE.3 3 = ZONE.4 254 = ALL 255 = CURRENT [None = CURRENT]	Source 0 = OPS 1 = HDMI.1 2 = HDMI.2 3 = HDMI.3 4 = HDMI.4 5 = DP	No	[For Zone 1] SOURCE.SELECT(ZONE.1)=HDMI.1 <i>SOURCE.SELECT(ZONE.1):HDMI.1</i>  [For the current zone] SOURCE.SELECT=HDMI.2 <i>SOURCE.SELECT:HDMI.2</i>	See Main -> Inputs and Views -> Zone 1/2/3/4
Splash Screen	SPLASH.SCREEN	1305	=?+-		0 = DISABLE 1 = ENABLE	No	SPLASH.SCREEN=ENABLE <i>SPLASH.SCREEN:ENABLE</i>	See Main -> Advanced Settings -> Menus and Messages -> Allow Splash Screen
Subnet Mask	IPV4.NETMASK	1205	=?	0 = STATIC [None = Current (for reads only)] [None = STATIC (for writes only)]	String	Yes	[Read the current subnet mask value] IPV4.NETMASK? <i>IPV4.NETMASK:"255.255.254.0"</i>  [Write the subnet mask for static IP] IPV4.NETMASK(STATIC)="255.255.255.0" <i>IPV4.NETMASK(STATIC):"255.255.255.0"</i>	See Main -> Advanced Settings -> Network -> Subnet Mask
System State	SYSTEM.STATE	2310	?		0 = STANDBY 1 = POWERING.ON 2 = ON 3 = POWERING.DOWN 4 = BACKLIGHT.OFF 5 = FAULT	No	SYSTEM.STATE? <i>SYSTEM.STATE:STANDBY</i>	Indicates the current state of the system: - STANDBY: The system is in its lowest power mode. Not all functions are available. - POWERING.ON: The system is transitioning from the STANDBY state to the ON state. - ON: The system is on with the backlight on. - POWERING.DOWN: The system is transitioning from the ON state to the STANDBY state. - FAULT: A system failure has occurred. Use the Error Log command to get more information.
Time	TIME	1100	=?	0 = YEAR 1 = MONTH 2 = DATE 3 = HOUR 4 = MINUTE [None = ALL]	Unsigned int	Yes	[Set the month to March] TIME(MONTH)=3 <i>TIME(MONTH):3</i>	See Main -> Advanced Settings -> Schedule -> Set Date and Time
Time - Day	TIME.DAY	1101	?		0 = MON 1 = TUE 2 = WED 3 = THU 4 = FRI 5 = SAT 6 = SUN	Yes	TIME.DAY? <i>TIME.DAY:TUE</i>	See Main -> Advanced Settings -> Schedule -> Set Date and Time -> Day

Setting	Command Code	Numeric Command Code	Operators	Modifiers	Operands	Available in Standby	Example	Notes
Time - Month	TIME.MONTH	1102	=?		1 = JANUARY 2 = FEBRUARY 3 = MARCH 4 = APRIL 5 = MAY 6 = JUNE 7 = JULY 8 = AUGUST 9 = SEPTEMBER 10 = OCTOBER 11 = NOVEMBER 12 = DECEMBER	Yes	TIME.MONTH=MARCH <i>TIME.MONTH:MARCH</i>	See Main -> Advanced Settings -> Schedule -> Set Date and Time -> Month
Time - String	TIME.STRING	1103	?		String	Yes	TIME.STRING? <i>TIME.STRING:"2015-09-01 13:21"</i>	See Main -> Advanced Settings -> Schedule -> Date / Time
Time Zone	TIMEZONE	1208	=?+-		[See separate table]	Yes	TIMEZONE=UTCM0800.PACIFIC.TIME.US.CANADA <i>TIMEZONE:UTCM0800.PACIFIC.TIME.US.CANADA</i>	See Main -> Advanced Settings -> Schedule -> Set Date and Time -> Time Zone.  See table on page 29 for valid values
Tint	TINT	203	=?+-	Zone 0 = ZONE.1 1 = ZONE.2 2 = ZONE.3 3 = ZONE.4 253 = ALL.INPUT 254 = ALL.ZONE 255 = CURRENT [None = CURRENT]	0-100	No	[For Zone 1] TINT(ZONE.1)=50 <i>TINT(ZONE.1):50</i>  [For the current zone] TINT=55 <i>TINT:55</i>	See Main -> Image Adjust -> Tint
Touch Control	TOUCH.CONTROL	1903	=?+-		0 = OPS 1 = EXTERNAL 2 = AUTO	Yes	TOUCH.CONTROL=AUTO <i>TOUCH.CONTROL:AUTO</i>	See Main -> Advanced Settings -> System Settings -> Touch Control
Treble	AUDIO.TREBLE	1005	=?+-		0-100	No	AUDIO.TREBLE=50 <i>AUDIO.TREBLE:50</i>	See Main -> Audio -> Treble
Use Network Time	NETWORK.NTP	1209	=?		0 = OFF 1 = ON	Yes	NETWORK.NTP=ON <i>NETWORK.NTP:ON</i>	See Main -> Advanced Settings -> Schedule -> Set Date and Time -> Use Network Time



Setting	Command Code	Numeric Command Code	Operators	Modifiers	Operands	Available in Standby	Example	Notes
Version Info	BUILD.INFO	2302	?	0 = DATE.SCP 1 = VERSION.SCP 3 = DATE.VP 4 = VERSION.VP 5 = SRC.INFO.VP 6 = VERSION.HDMI 7 = VERSION.FRC 8 = PKG.DATE 9 = PKG.VERSION	String	Yes	BUILD.INFO(PKG.VERSION)? BUILD.INFO(PKG.VERSION):"1.0.600"	See Main -> Information -> System Information
Volume	AUDIO.VOLUME	1006	=?+-		0-100	No	AUDIO.VOLUME=50 AUDIO.VOLUME:50	See Main -> Audio -> Volume

## Current Zone Layout

Value	Name	Layout	Advanced Layout	Current Zone
0	S.1	Single View	N/A	Zone 1
1	P.UL.1	PIP	Upper Left	Zone 1
2	P.UL.2	PIP	Upper Left	Zone 2
3	P.UR.1	PIP	Upper Right	Zone 1
4	P.UR.2	PIP	Upper Right	Zone 2
5	P.LL.1	PIP	Lower Left	Zone 1
6	P.LL.2	PIP	Lower Left	Zone 2
7	P.LR.1	PIP	Lower Right	Zone 1
8	P.LR.2	PIP	Lower Right	Zone 2
9	D.L.1	Dual View	Left / Right	Zone 1
10	D.L.2	Dual View	Left / Right	Zone 2
11	D.T.1	Dual View	Top / Bottom	Zone 1
12	D.T.2	Dual View	Top / Bottom	Zone 2
13	T.L.1	Triple View	One Left / Two Right	Zone 1
14	T.L.2	Triple View	One Left / Two Right	Zone 2
15	T.L.3	Triple View	One Left / Two Right	Zone 3
16	T.R.1	Triple View	Two Left / One Right	Zone 1
17	T.R.2	Triple View	Two Left / One Right	Zone 2
18	T.R.3	Triple View	Two Left / One Right	Zone 3
19	T.T.1	Triple View	One Top / Two Bottom	Zone 1
20	T.T.2	Triple View	One Top / Two Bottom	Zone 2
21	T.T.3	Triple View	One Top / Two Bottom	Zone 3
22	T.B.1	Triple View	Two Top / One Bottom	Zone 1
23	T.B.2	Triple View	Two Top / One Bottom	Zone 2
24	T.B.3	Triple View	Two Top / One Bottom	Zone 3
25	T.M.1	Triple View	Side-by-Side	Zone 1
26	T.M.2	Triple View	Side-by-Side	Zone 2
27	T.M.3	Triple View	Side-by-Side	Zone 3
28	Q.1	Quad View	N/A	Zone 1
29	Q.2	Quad View	N/A	Zone 2
30	Q.3	Quad View	N/A	Zone 3
31	Q.4	Quad View	N/A	Zone 4

## Key

Value	Name	Equivalent Remote Control Button	Description
0	UP	UP	Navigate up
1	DOWN	DOWN	Navigate down
2	MENU	MENU	Opens the menu
3	SOURCE	[None]	Toggles the source on the current zone
5	VOLUME.PLUS	VOL +	Volume increase
6	VOLUME.MINUS	VOL -	Volume decrease
9	EXIT	[None]	Exits the menu
12	LEFT	LEFT	Navigate left
13	ENTER	ENTER	Selects the current menu item
14	PREV	PREV	Returns to the previous menu
15	RIGHT	RIGHT	Navigate right
17	KEY.1	1	Number button 1
18	KEY.2	2	Number button 2
19	KEY.3	3	Number button 3
20	KEY.4	4	Number button 4
21	KEY.5	5	Number button 5
22	KEY.6	6	Number button 6
23	KEY.7	7	Number button 7
24	KEY.8	8	Number button 8
25	KEY.9	9	Number button 9
26	MUTE	MUTE	Audio mute
32	KEY.0	0	Number button 0
256	STDBY.TOGGLE	[None]	Toggles the power on and off
257	STDBY.ENTER	OFF	Power off
258	STDBY.EXIT	ON	Power on
259	MENU.PREV	[None]	Returns to the previous menu
260	TOP	TOP	Selects the top line in the current menu
261	PRESETS	PRESETS	Opens the Presets menu
262	PRESET1	PRESET 1	Applies Preset 1
263	PRESET2	PRESET 2	Applies Preset 2
264	PRESET3	PRESET 3	Applies Preset 3
265	PRESET4	PRESET 4	Applies Preset 4

Value	Name	Equivalent Remote Control Button	Description
266	ZONE1	ZONE 1	Selects the input for Zone 1
267	ZONE2	ZONE 2	Selects the input for Zone 2
268	ZONE3	ZONE 3	Selects the input for Zone 3
269	ZONE4	ZONE 4	Selects the input for Zone 4
270	PIP.MODE	PIP MODE	Selects the Multi-Source View setting
271	PIP.SWAP	PIP SWAP	Swaps the main and PIP windows
272	HDMI1	HDMI 1	Selects HDMI 1 for the current zone
273	HDMI2	HDMI 2	Selects HDMI 2 for the current zone
274	HDMI3	HDMI 3	Selects HDMI 3 for the current zone
275	HDMI4	HDMI 4	Selects HDMI 4 for the current zone
276	DISPLAY.PORT	DP	Selects DP for the current zone
277	DVI	DVI	Not used
278	VGA	VGA	Not used
279	OPS	OPS	Selects OPS for the current zone
280	WALL	VIDEO WALL	Not used
281	COLOR	COLOR	Not used
282	MISC	MISC	Not used
283	ARROW.LEFT	◀	Not used
284	ARROW.RIGHT	▶	Not used
285	STAR.STAR	**	Not used

## Timezone

Value	Name	Description
0	UTCM1200.INTERNATIONAL.DATE.LINE.WEST	(UTC-12:00) International Date Line West
1	UTCM1100.COORDINATED.UNIVERSAL.TIMEM11	(UTC-11:00) Coordinated Universal Time -11
2	UTCM1000.HAWAII	(UTC-10:00) Hawaii
3	UTCM0900.ALASKA	(UTC-09:00) Alaska
4	UTCM0800.BAJA.CALIFORNIA	(UTC-08:00) Baja California
5	UTCM0800.PACIFIC.TIME.US.CANADA	(UTC-08:00) Pacific Time (US and Canada)
		(UTC-07:00) Mountain Time (US and Canada)
6	UTCM0700.ARIZONA	(UTC-07:00) Arizona
7	UTCM0700.CHIHUAHUA.LA.PAZ.MAZATLAN	(UTC-07:00) Chihuahua, La Paz, Mazatlan
8	UTCM0600.CENTRAL.AMERICA	(UTC-06:00) Central America
9	UTCM0600.CENTRAL.TIME.US.CANADA	(UTC-06:00) Central Time (US and Canada)
10	UTCM0600.GUADALAJARA.MEXICO.CITY.MONTERREY	(UTC-06:00) Guadalajara, Mexico City, Monterrey
11	UTCM0600.SASKATCHEWAN	(UTC-06:00) Saskatchewan
12	UTCM0500.BOGOTA.LIMA.QUITO.RIO.BRANCO	(UTC-05:00) Bogota, Lima, Quito
13	UTCM0500.CHETUMAL	(UTC-05:00) Chetumal
14	UTCM0500.EASTERN.TIME.US.CANADA	(UTC-05:00) Eastern Time (US and Canada)
15	UTCM0500.INDIANA.EAST	(UTC-05:00) Indiana (East)
16	UTCM0430.CARACAS	(UTC-04:30) Caracas
17	UTCM0400.ASUNCION	(UTC-04:00) Asuncion
18	UTCM0400.ATLANTIC.TIME.CANADA	(UTC-04:00) Atlantic Time (Canada)
19	UTCM0400.CUIABA	(UTC-04:00) Cuiaba
20	UTCM0400.GEORGETOWN.LA.PAZ.MANAU.SAN.JUAN	(UTC-04:00) Georgetown, La Paz, Manaus, San Juan
21	UTCM0330.NEWFOUNDLAND	(UTC-03:30) Newfoundland
22	UTCM0300.BRASILIA	(UTC-03:00) Brasilia
23	UTCM0300.CAYENNE.FORTALEZA	(UTC-03:00) Cayenne, Fortaleza
24	UTCM0300.CITY.OF.BUENOS.AIRES	(UTC-03:00) Buenos Aires
25	UTCM0300.GREENLAND	(UTC-03:00) Greenland
26	UTCM0300.MONTEVIDEO	(UTC-03:00) Montevideo
27	UTCM0300.SALVADOR	(UTC-03:00) Salvador
28	UTCM0300.SANTIAGO	(UTC-03:00) Santiago
29	UTCM0200.COORDINATED.UNIVERSAL.TIMEM02	(UTC-02:00) Coordinated Universal Time -02

Value	Name	Description
30	UTCM0100.AZORES	(UTC-01:00) Azores
31	UTCM0100.CABO.VERDE.IS	(UTC-01:00) Cabo Verde Is.
32	UTC.CASABLANCA	(UTC) Casablanca
33	UTC.COORDINATED.UNIVERSAL.TIME	(UTC) Coordinated Universal Time
34	UTC.DUBLIN.EDINBURGH.LISBON.LONDON	(UTC) Dublin, Edinburgh, Lisbon, London
35	UTC.MONROVIA.REYKJAVIK	(UTC) Monrovia, Reykjavik
36	UTCP0100.AMSTERDAM.BERLIN.BERN.ROME. STOCKHOLM.VIENNA	(UTC+01:00) Amsterdam, Berlin, Bern, Rome, Stockholm, Vienna
37	UTCP0100.BELGRADE.BRATISLAVA.BUDAPEST. LJUBLJANA.PRAGUE	(UTC+01:00) Belgrade, Bratislava, Budapest, Ljubljana, Prague
38	UTCP0100.BRUSSELS.COPENHAGEN.MADRID.PARIS	(UTC+01:00) Brussels, Copenhagen, Madrid, Paris
39	UTCP0100.SARAJEVO.SKOPJE.WARSAW.ZAGREB	(UTC+01:00) Sarajevo, Skopje, Warsaw, Zagreb
40	UTCP0100.WEST.CENTRAL.AFRICA	(UTC+01:00) West Central Africa
41	UTCP0100.WINDHOEK	(UTC+01:00) Windhoek
42	UTCP0200.AMMAN	(UTC+02:00) Amman
43	UTCP0200.ATHENS.BUCHAREST	(UTC+02:00) Athens, Bucharest
44	UTCP0200.BEIRUT	(UTC+02:00) Beirut
45	UTCP0200.CAIRO	(UTC+02:00) Cairo
46	UTCP0200.DAMASCUS	(UTC+02:00) Damascus
47	UTCP0200.HARARE.PRETORIA	(UTC+02:00) Harare, Pretoria
48	UTCP0200.HELSINKI.KYIV.RIGA.SOFIA.TALLINN.VILNIUS	(UTC+02:00) Helsinki, Kyiv, Riga, Sofia, Tallinn, Vilnius
49	UTCP0200.ISTANBUL	(UTC+02:00) Istanbul
50	UTCP0200.JERUSALEM	(UTC+02:00) Jerusalem
51	UTCP0200.KALININGRAD.RTZ.1	(UTC+02:00) Kaliningrad (RTZ 1)
52	UTCP0200.TRIPOLI	(UTC+02:00) Tripoli
53	UTCP0300.BAGHDAD	(UTC+03:00) Baghdad
54	UTCP0300.KUWAIT.RIYADH	(UTC+03:00) Kuwait, Riyadh
55	UTCP0300.MINSK	(UTC+03:00) Minsk
56	UTCP0300.MOSCOW.ST.PETERSBURG.VOLGOGRAD. RTZ.2	(UTC+03:00) Moscow, St. Petersburg, Volgograd (RTZ 2)
57	UTCP0300.NAIROBI	(UTC+03:00) Nairobi
58	UTCP0330.TEHRAN	(UTC+03:30) Tehran
59	UTCP0400.ABU.DHABI.MUSCAT	(UTC+04:00) Abu Dhabi, Muscat
60	UTCP0400.BAKU	(UTC+04:00) Baku

Value	Name	Description
61	UTCP0400.IZHEVSK.SAMARA.RTZ.3	(UTC+04:00) Izhevsk, Samara (RTZ 3)
62	UTCP0400.PORT.LOUIS	(UTC+04:00) Port Louis
63	UTCP0400.TBILISI	(UTC+04:00) Tbilisi
64	UTCP0400.YEREVAN	(UTC+04:00) Yerevan
65	UTCP0430.KABUL	(UTC+04:30) Kabul
66	UTCP0500.ASHGABAT.TASHKENT	(UTC+05:00) Tashkent
67	UTCP0500.EKATERINBURG.RTZ.4	(UTC+05:00) Ekaterinburg (RTZ 4)
68	UTCP0500.ISLAMABAD.KARACHI	(UTC+05:00) Islamabad, Karachi
69	UTCP0530.CHENNAI.KOLKATA.MUMBAI.NEW.DELHI	(UTC+05:30) Chennai, Kolkata, Mumbai, New Delhi
70	UTCP0530.SRI.JAYAWARDENEPURA	(UTC+05:30) Sri Jayawardenepura
71	UTCP0545.KATHMANDU	(UTC+05:45) Kathmandu
72	UTCP0600.ASTANA	(UTC+06:00) Astana
73	UTCP0600.DHAKA	(UTC+06:00) Dhaka
74	UTCP0600.NOVOSIBIRSK.RTZ.5	(UTC+06:00) Novosibirsk (RTZ 5)
75	UTCP0630.YANGON.RANGOON	(UTC+06:30) Yangon (Rangoon)
76	UTCP0700.BANGKOK.HANOI.JAKARTA	(UTC+07:00) Bangkok, Hanoi, Jakarta
77	UTCP0700.KRASNOYARSK.RTZ.6	(UTC+07:00) Krasnoyarsk (RTZ 6)
78	UTCP0800.BEIJING.CHONGQING.HONG.KONG.URUMQI	(UTC+08:00) Beijing, Chongqing, Hong Kong, Urumqi
79	UTCP0800.IRKUTSK.RTZ.7	(UTC+08:00) Irkutsk (RTZ 7)
80	UTCP0800.KUALA.LUMPUR.SINGAPORE	(UTC+08:00) Kuala Lumpur, Singapore
81	UTCP0800.PERTH	(UTC+08:00) Perth
82	UTCP0800.TAIPEI	(UTC+08:00) Taipei
83	UTCP0800.ULAANBAATAR	(UTC+08:00) Ulaanbaatar
84	UTCP0900.OSAKA.SAPPORO.TOKYO	(UTC+09:00) Osaka, Sapporo, Tokyo
85	UTCP0900.SEOUL	(UTC+09:00) Seoul
86	UTCP0900.YAKUTSK.RTZ.8	(UTC+09:00) Yakutsk (RTZ 8)
87	UTCP0930.ADELAIDE	(UTC+09:30) Adelaide
88	UTCP0930.DARWIN	(UTC+09:30) Darwin
89	UTCP1000.BRISBANE	(UTC+10:00) Brisbane
90	UTCP1000.CANBERRA.MELBOURNE.SYDNEY	(UTC+10:00) Canberra, Melbourne, Sydney
91	UTCP1000.GUAM.PORT.MORESBY	(UTC+10:00) Guam, Port Moresby
92	UTCP1000.HOBART	(UTC+10:00) Hobart
93	UTCP1000.MAGADAN	(UTC+10:00) Magadan

<b>Value</b>	<b>Name</b>	<b>Description</b>
94	UTCP1000.VLADIVOSTOK.MAGADAN.RTZ.9	(UTC+11:00) Vladivostok (RTZ 9)
95	UTCP1100.CHOKURDAKH.RTZ.10	(UTC+11:00) Chokurdakh (RTZ 10)
96	UTCP1100.SOLOMON.IS.NEW.CALEDONIA	(UTC+11:00) Solomon Is., New Caledonia
97	UTCP1200.ANADYR.PETROPAVLOVSK.KAMCHATSKY.RTZ.11	(UTC+12:00) Anadyr, Petropavlovsk-Kamchatsky (RTZ 11)
98	UTCP1200.AUCKLAND.WELLINGTON	(UTC+12:00) Auckland, Wellington
99	UTCP1200.COORDINATED.UNIVERSAL.TIMEP12	(UTC+12:00) Coordinated Universal Time +12
100	UTCP1200.FIJI	(UTC+12:00) Fiji
101	UTCP1300.NUKU.ALOFA	(UTC+13:00) Nuku'alofa
102	UTCP1300.SAMOA	(UTC+13:00) Samoa
103	UTCP1400.KIRITIMATI.ISLAND	(UTC+14:00) Kiritimati Island



## Sending Serial Commands via USB

The USB-B connector accept the same serial command set as RS232. As most PCs no longer have RS232 connections, using the USB-B connector becomes a convenient method for performing serial communication with the display.

### Installing the UltraRes USB drivers

Before using USB for serial communication, the USB drivers must be installed. This section describes the steps necessary to install the USB drivers. You can skip this section if you have already installed the USB drivers on your computer.

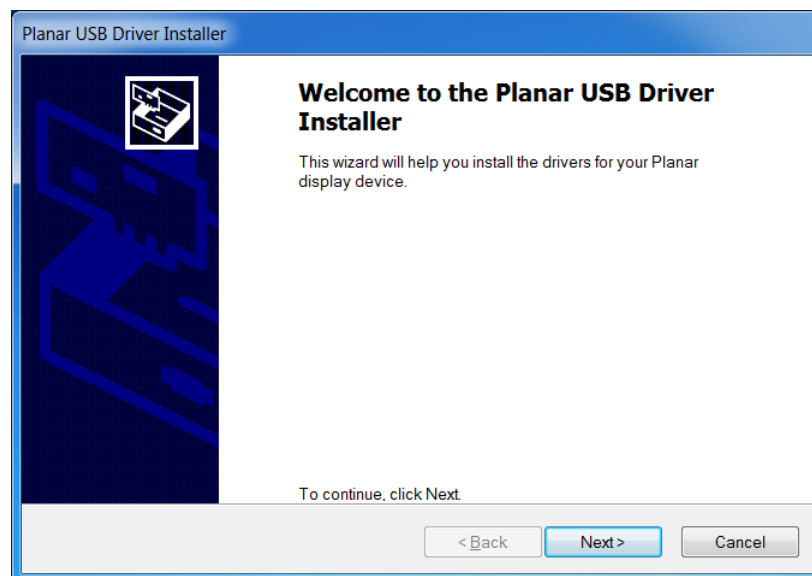
#### Automatically installing the USB drivers

In most cases, the USB driver installation can be performed using the automated driver installation program included on the USB flash drive in your accessory kit.

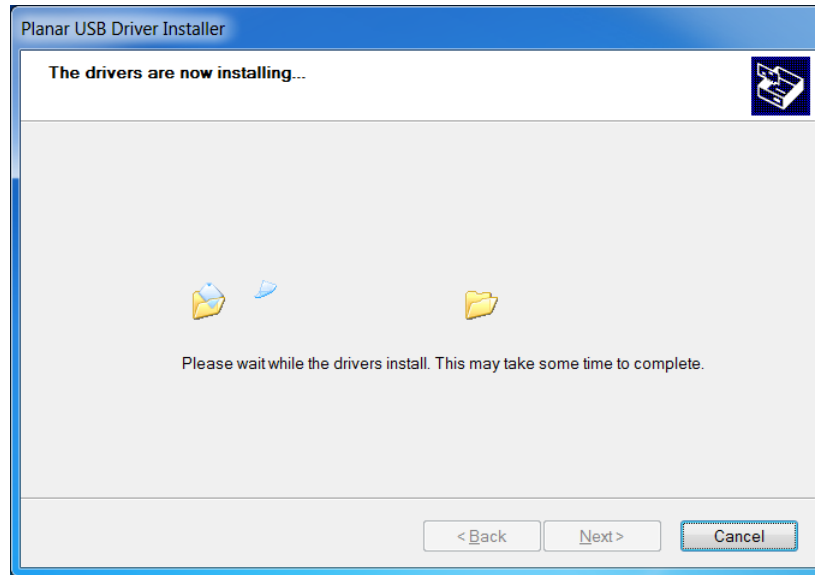
- If using a 64-bit version of Windows, use the CP210xVCPInstaller\_x64.exe installation program.
- If using a 32-bit version of Windows, use the CP210xVCPInstaller\_x86.exe installation program.

If you're unsure whether your machine is 32-bit or 64-bit, try both installation programs. If the selected program is for a different architecture, the installer will inform you to use the other installation program.

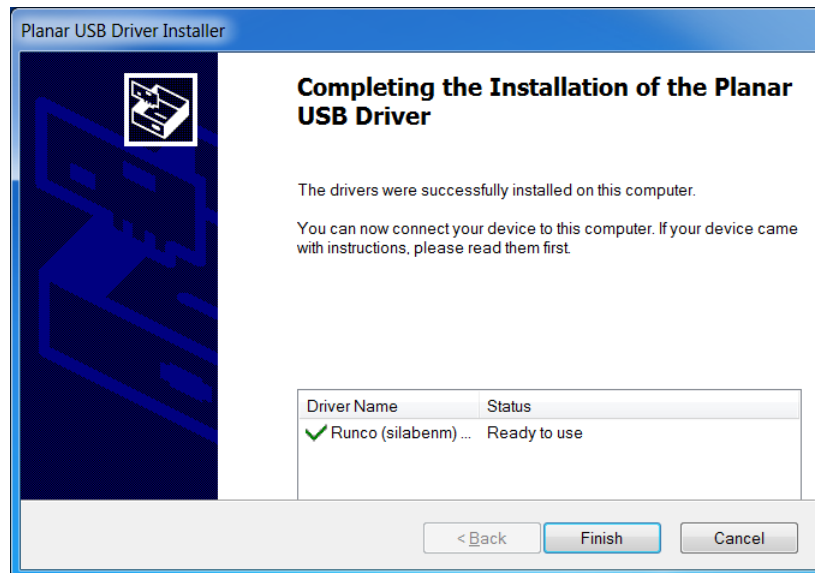
- 1 When the Planar USB Driver Installer page opens, click "Next".



- 2 The USB drivers will be automatically installed.



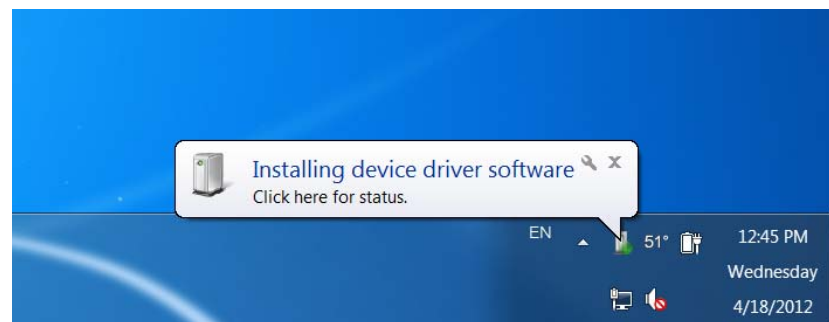
- 3 When the installation completes, click "Finish". The USB driver installation process is now complete.



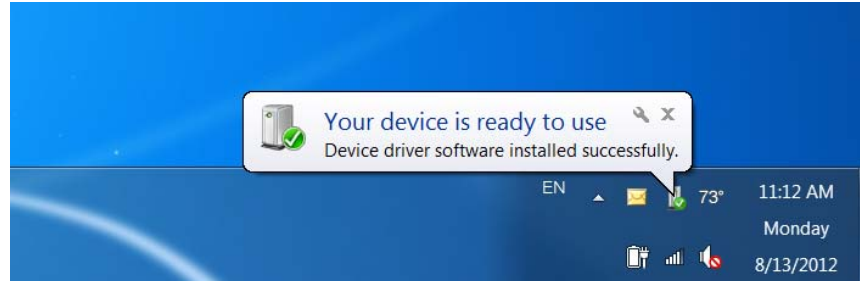
## Manually installing the USB drivers

If the automatic USB driver installation doesn't succeed, you can follow the steps below to manually install the USB drivers. The USB flash drive in your accessory kit contains the USB drivers for manual installation.

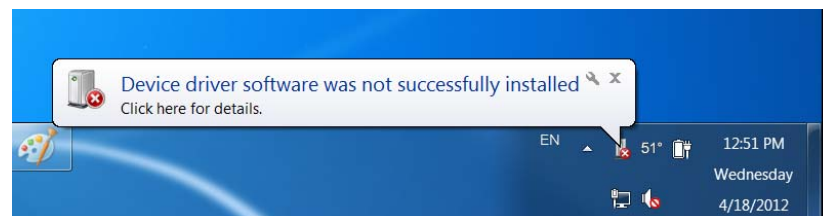
- 1 Plug in the USB cable to your computer and to the UltraRes panel.
- 2 Windows will detect the new hardware and attempt to install the drivers on its own. If you do not see the "Installing device driver software" message, then the driver installation previously failed. Skip to step 5.



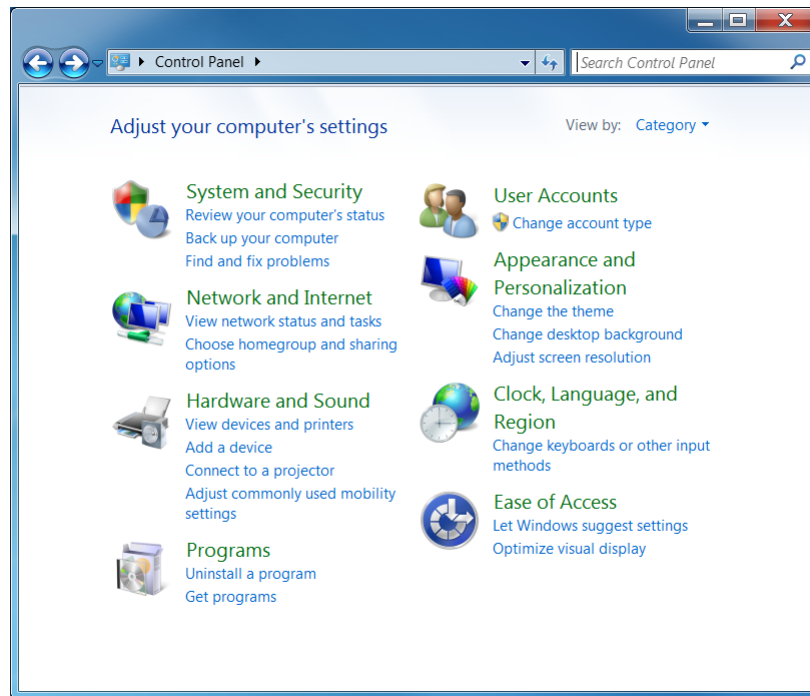
- 3 If driver installation succeeds, you will see a message like the one shown below. If so, driver installation is complete.



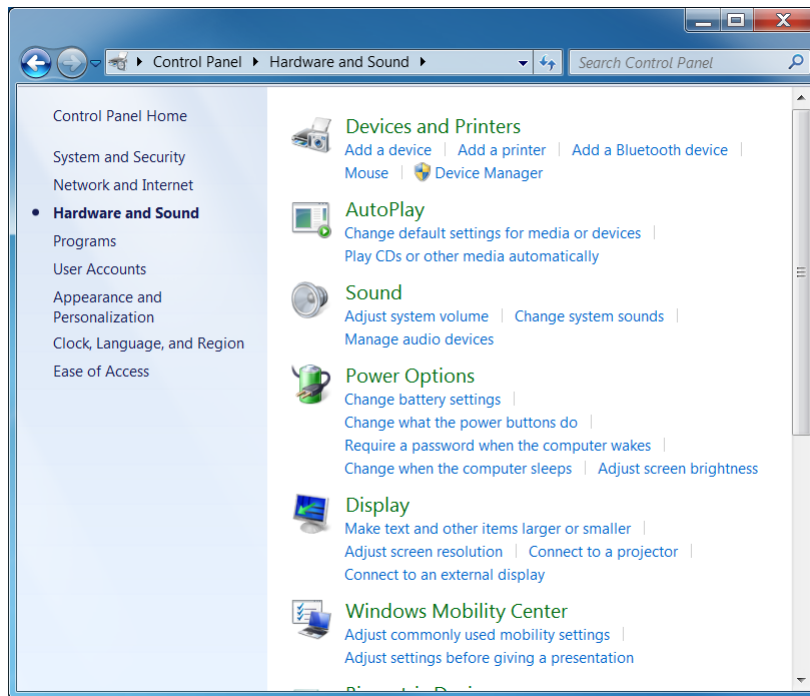
- 4 If Windows' attempt at installing the drivers fails, you will need to manually install the drivers using the steps below.



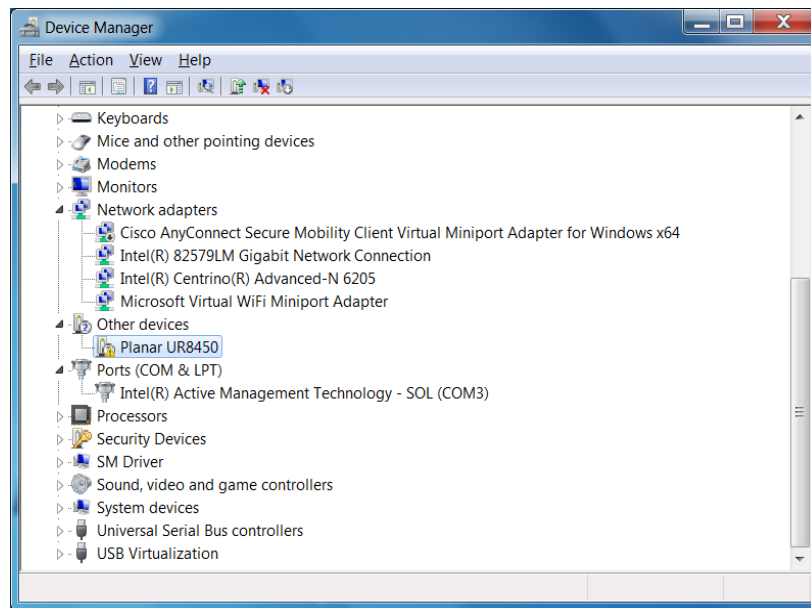
5 Open the Start menu and select "Control Panel".



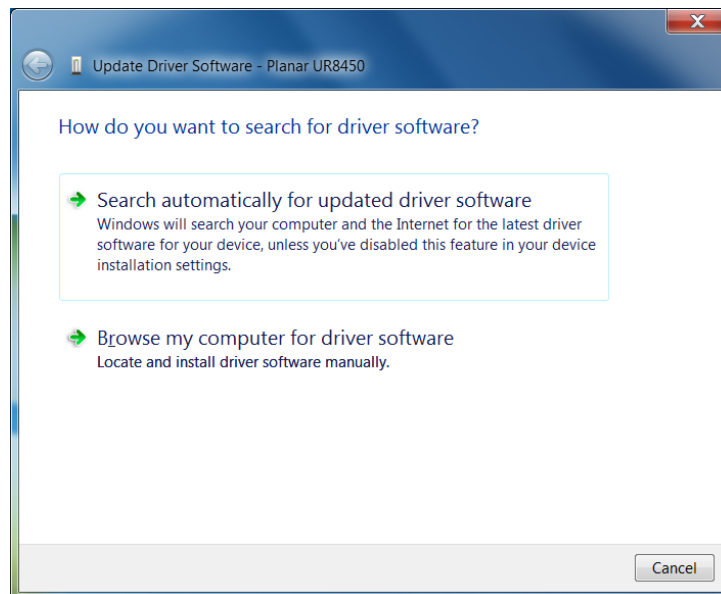
6 Select Hardware and Sound. In the following menu, under Devices and Printers, select "Device Manager".



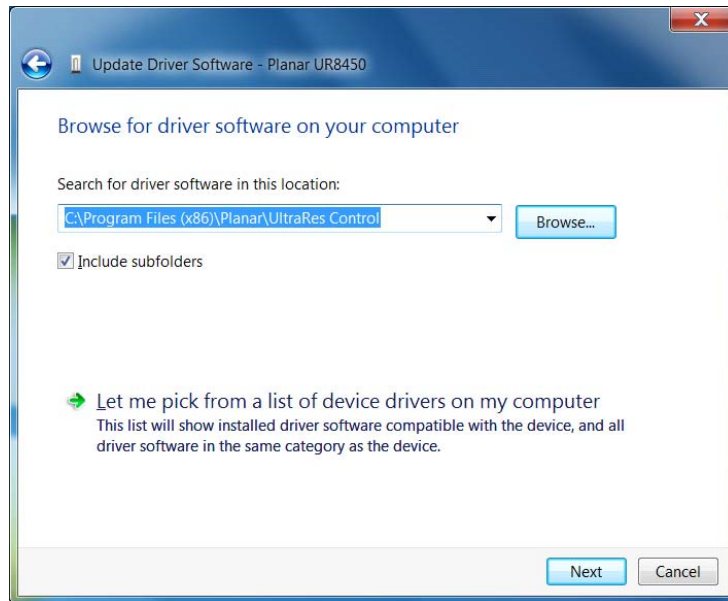
- 7 In the Device Manager, there will be a “Planar UltraRes” or “Planar UR8450” item in the “Other Devices” section. Right-click on Planar UltraRes (or Planar UR8450) and select “Update Driver Software”.



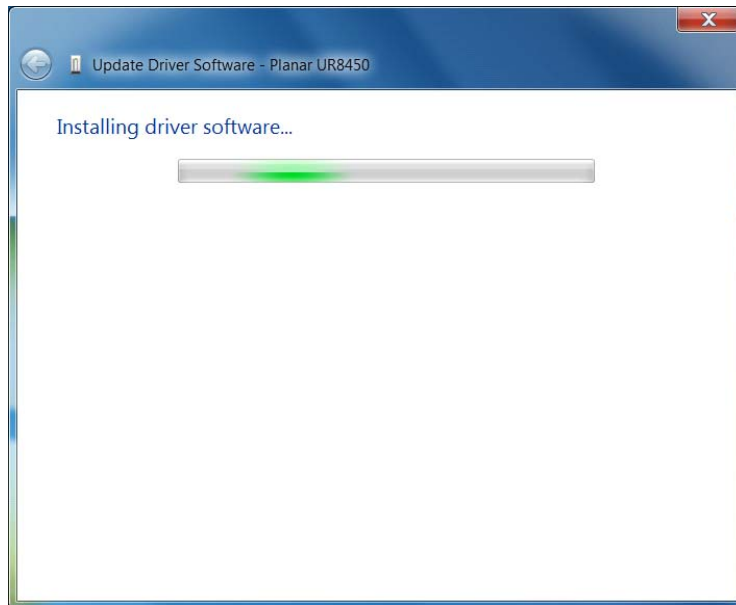
- 8 Follow the steps defined in the Update Driver Software wizard as follows.
  - a On the initial screen, select “Browse my computer for driver software”.



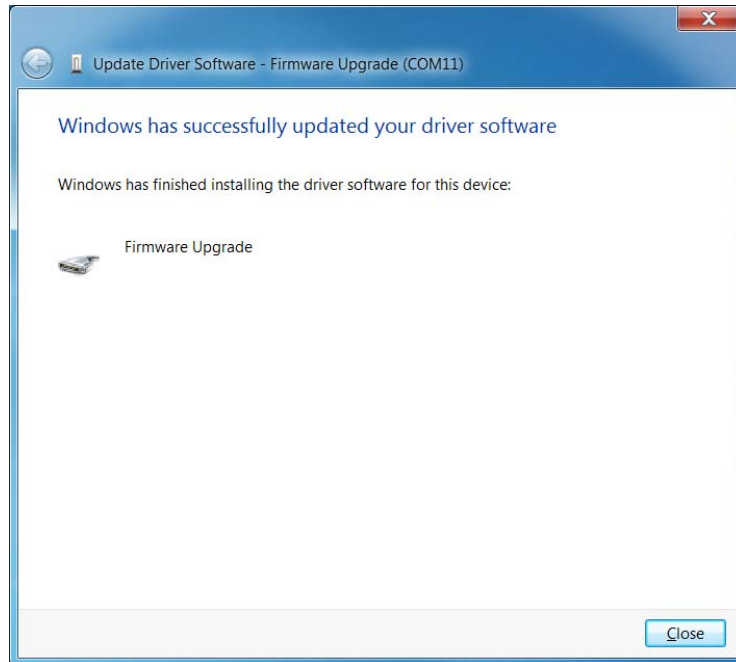
- b** Make sure the “Include subfolders” checkbox is checked. The USB drivers are installed as part of the Planar UltraRes Control installation process. Use the “Browse” button to locate the directory where Planar UltraRes Control was installed. Click “Next”.



- c** The Update Driver Software wizard will search the directory for the proper USB drivers and install them.



- d When the installation completes, click "Close". The USB driver installation process is now complete.



## Using the UltraRes USB Connection

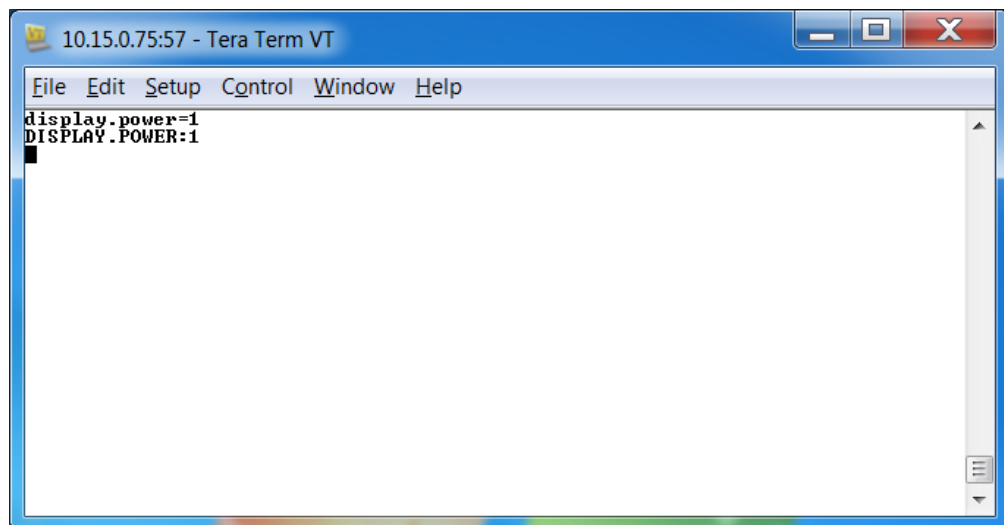
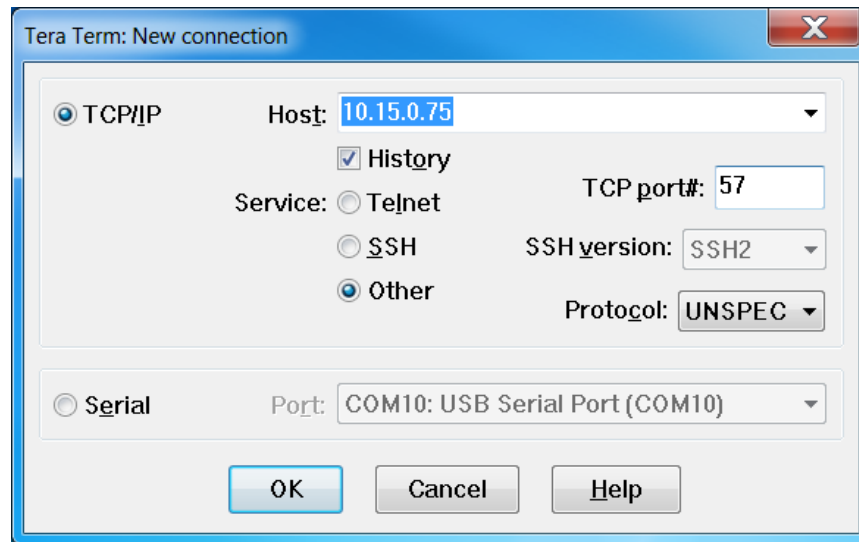
Once the USB drivers are installed, the PC will recognize the USB-B connection as a regular serial port. The USB-B connection will appear in the COM port list of each serial terminal program. Any terminal program such as Tera Term can be used to test the connection.

## Sending RS232 Commands Via TCP or UDP

TCP and UDP port 57 accept the same serial command set as RS232. It is convenient for IP control applications and can be tested with a TCP terminal program such as Tera Term or a UDP terminal program such as Hercules.

Notice the following in the TCP example below using Tera Term:

- The IP address is 10.15.0.75
- Port 57 is selected
- Service is set to "Other" to indicate that TCP is being used without Telnet or SSH





Notice the following in the UDP example below using Hercules:

- The IP address is 10.15.0.67
- Port 57 is selected
- “444953504C41592E504F5745523D310D” in the Send box is hex for “DISPLAY.POWER=1”

**Note:** Most UDP terminal programs won't automatically send the [CR] at the end of the command, so the hex command is used to do this manually.

