

# CLARITY VISUAL CONTROL STATION (VCS)

Product Overview – January 2018

LEYARD™ PLANAR®

# Clarity<sup>®</sup> Visual Control Station<sup>™</sup> (VCS<sup>™</sup>)

## Video Wall Image Processing Solution

- Broad range of source capture and display capabilities
- New commercial chassis with Windows<sup>®</sup> 10 LTSCB
- Enhanced VCS Control Software



# SOURCE CAPTURE INPUTS

Clarity VCS

# Source Capture & Display Capabilities

Full HD and 4K video sources can be connected via DisplayPort, DVI, HDMI, SDI (SD, HD, 3G), composite and IP Sources.

Signal Type	Video Input Resolution	Compliance
HDMI	3840 x 2160 @ 30fps 1920 x 1080 @ 60fps	HDCP 1.4
DVI	3840 x 2160 @ 30fps 1920 x 1080 @ 60fps	HDCP 1.4
DisplayPort	3840 x 2160 @ 60fps 1920 x 1080 @ 60fps	HDCP 1.4
IP	3840 x 2160 @ 30fps 1920 x 1080 @ 60fps	H.264
SDI	1920 x 1080 @ 60fps	n/a
Composite	720 x 576	n/a

# IMPROVED CLARITY VCS CHASSIS

Clarity VCS

# Improved Clarity VCS Chassis

Clarity VCS video wall processor is both powerful and reliable, utilizing:



- 4U rack-mountable chassis
- High-performing, 3rd generation PCIe switched fabric backplane
- Powerful server-class CPU
- RAID 1 solid state drives
- Redundant power supplies

# Improved Clarity VCS Chassis

## Clarity VCS Specifications

Processor & Memory	Intel® Core™ i7, 32GB DDR4 DRAM
Operating System	Windows 10 LTSC
Size	500 x 175 x 482mm   19.7 x 6.9 x 18.9in
Weight	33kg   72.7lb
Backplane & Slots	3rd Generation PCIe switched fabric 11 slots/chassis, 8 lanes/slot
Disk Drive	Dual 250GB SSD in RAID 1 configuration
Ethernet	2x 10/100/1000 Ethernet
USB Ports	2x USB 3.0 Back, 6x USB 2.0 (2 Front, 2 back, 2 internal)
Power Supply	2x 600 watt, Redundant
Power Consumption	593 watts (max)
Thermal Load	2024 BTU/hr (max)
Product Approvals	FCC, CE, RoHS, UL



# VCS CONTROL SOFTWARE

Clarity VCS

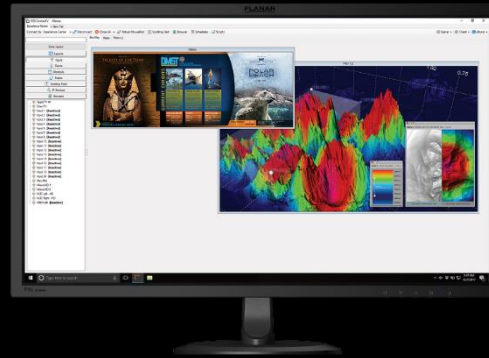
LEYARD. PLANAR<sup>®</sup>



# VCS Control Software

VCS Control Software v6 offers Standard or Enterprise editions. Both editions allow users to:

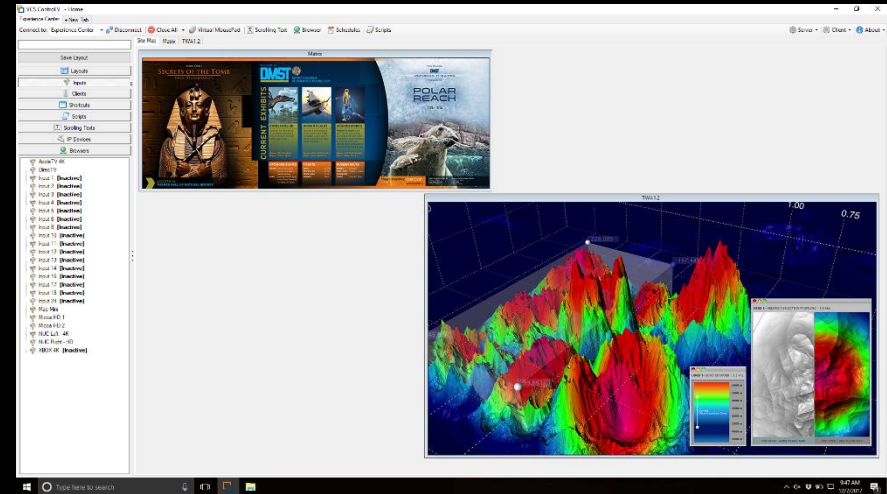
- Create, resize, move windows
- Create and save layouts
- Sub layout as source
- Control multiple VCS from the same interface
- Receive IP commands
- Source preview



# VCS Control Software

VCS Control Software v6 graphical user interface (GUI) allows users to:

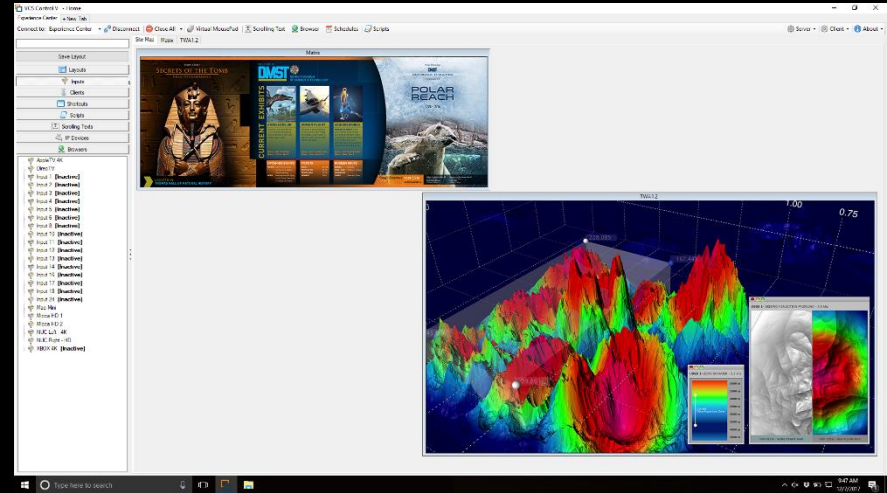
- Click and drag – One button to close, go to full screen or bring layouts into grid
- Automatically fill content on screen or in grid
- Create, resize and move windows
- Manage multiple Clarity VCS and video walls
- Load inputs, applications, web pages, pictures and videos



# VCS Control Software, Enterprise Edition

VCS Control Software Enterprise Edition empowers control and collaboration rooms with a full feature video wall processor.

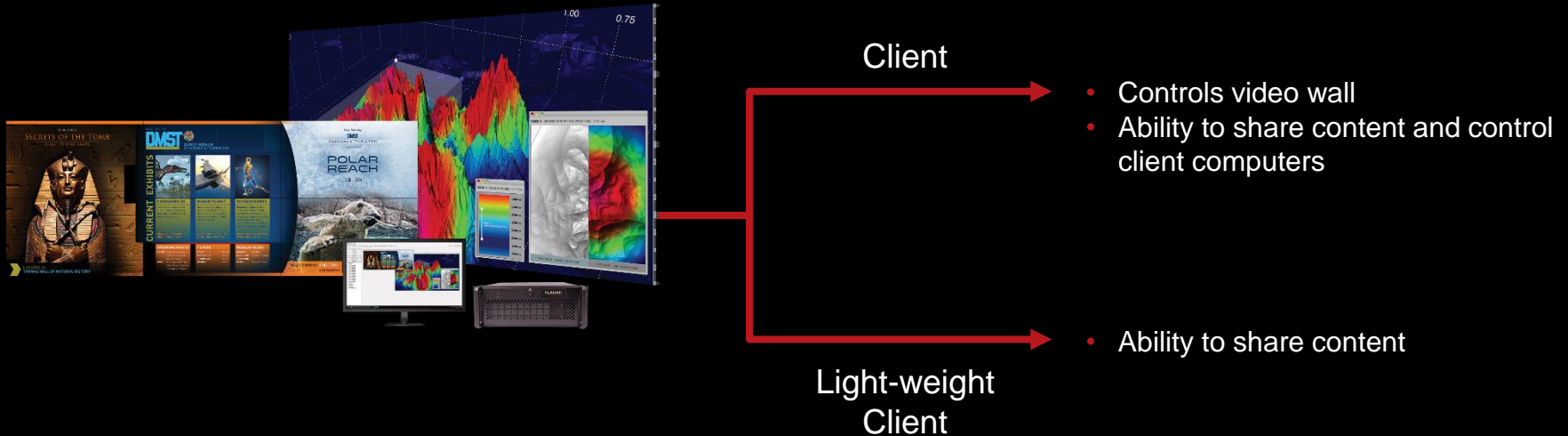
- Higher level of functionality with:
  - IP capture
  - Scheduling
  - Scripts
- Greater teamwork and control with:
  - Unlimited licenses
  - User rights management
  - Network capture



# VCS Control Software, Enterprise Edition

## Network Capture

Network Capture enables the ability to share screen content across the local area network and to the video wall.



# VCS Control Software, Enterprise Edition

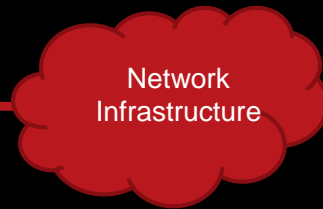
## IP Stream Capture

- IP capture card and Enterprise Edition Software enables video over IP
- Customer will have traditional sources and compatible IP sources

Compatible IP Cameras



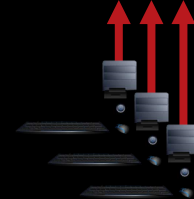
Compatible Encoders



Clarity VCS  
Video Wall Processor



Traditional Wired Sources



Video Walls

# Enhanced VCS Control Software

## Key Features

### VCS Control Software V6 – Standard and Enterprise Editions

Create, resize, move windows

Place any source in any location on the video walls at any size without physical limitations of display size or resolutions

Examples—

- Use the video wall(s) space as desired without any limitation on cabinet position

Create and save layouts

Create, save and recall an unlimited amount of layouts

Examples—

- First shift, second shift, third shift layouts

Sub layout as source

Select and save a group of sources as a virtual source layout for easy drag-and-drop in other areas of the same video wall or different display. The saved virtual source can be moved and resized as a single unit.

Examples—

- Group all cameras in one layout and bring them at any place in the video wall

Control multiple VCS from same GUI

Link multiple Clarity VCS processors in the same VCS interface. Each linked Clarity VCS will appear on its own tab so users can switch different Clarity VCS processors easily and quickly.

Examples—

- Easily manage video walls in different locations or for easier user management

Receive IP commands

Clarity VCS can receive and perform IP commands from an external controller for typical actions

Examples—

- Loading layouts
- Changing sources among others

# Enhanced VCS Control Software

## Key Features

### VCS Control Software V6 – Standard and Enterprise Editions

Application sources	Run Windows-based applications as a content source include them in preset layouts	Examples— <ul style="list-style-type: none"><li>▪ View emergency procedures and emergency contact list information that are stored in the VCS drives</li></ul>
Input grouping	Ability to create virtual groups of sources that can more easily be assigned access rights to users or groups of users	Examples— <ul style="list-style-type: none"><li>▪ Security cameras grouped together for security teams to access</li><li>▪ Sensors and switches grouped together for engineering teams to access</li><li>▪ Highly secure sources grouped together for users with a particular security clearance</li></ul>
Source preview	View a physical representation of the video wall in the VCS Control Software	Examples— <ul style="list-style-type: none"><li>▪ Be able to see they layout in the wall from the rack room using the VCS Control Client software without having to walk to the video wall</li></ul>
Site Map (multiple video walls)	View and manage multiple walls concurrently in the same GUI	Examples— <ul style="list-style-type: none"><li>▪ Ability to manage and share sources across the main control room video wall, as well as the conference room video wall from same VCS unit and software</li></ul>

# Enhanced VCS Control Software

## Key Features

### VCS Control Software V6 – Enterprise Edition Only

Scripting engine	Support for simple scripting language that allows for every UI feature to be invoked via a script with full scheduling capabilities, including programming complex sequence of events performed on a regular base and recall scripts via controller, web page or handheld application	Examples— <ul style="list-style-type: none"><li>▪ Program complex sequence of events that are performed on a regular base and recall scripts via controller, web page or handheld application</li><li>▪ Program a beginning of day screen, end of day screen or an emergency response screen layout</li></ul>
Network capture	Share display content across the local area network and to the video wall	Examples— <ul style="list-style-type: none"><li>▪ Security cameras grouped together for security teams to access</li><li>▪ Sensors and switches grouped together for engineering teams to access</li><li>▪ Highly secure sources grouped together for users with a particular security clearance</li></ul>
IP camera capture	Decode and display IP camera feeds (H.264, MPEG2, MJPG, other) on Clarity VCS in 1080 x 1920 @ 30fps (minimum)	Examples— <ul style="list-style-type: none"><li>▪ Add IP cameras to the video wall without wiring directly to the controller or without adding a decoder between the camera and the controller</li></ul>



# Enhanced VCS Control Software

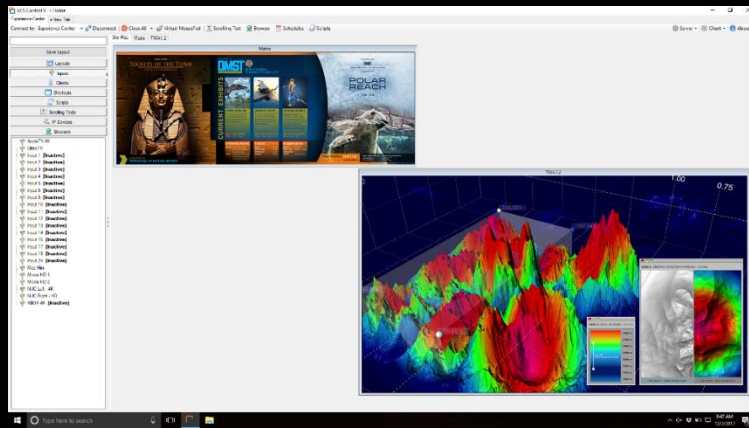
## Key Features

### VCS Control Software V6 – Enterprise Edition Only

User rights management	Assign and maintain users or groups rights by authorizing and restricting work areas on the video wall, access to sources and to KVM	Examples— <ul style="list-style-type: none"><li>Control access to content, viewing sources, changing sources or adjusting image quality</li><li>Give the teams full access to security cameras and security sensors, but no access to key process parameters</li></ul>
Logging	Logging, organizing and exporting to .xls of every click or movement on a wall, making it helpful for action reports or analysis of emergency responses	Examples— <ul style="list-style-type: none"><li>Investigative team can re-create the actions from the control room or audit response</li></ul>
Scheduling	Define events at specific times in a calendar, including loading layouts at specific time of the day	Examples— <ul style="list-style-type: none"><li>Load first shift layout at the start of the first shift</li><li>Load second shift layout at the start of the second shift.</li><li>Load daily meeting layout at the start of the daily meeting</li></ul>

# Enhanced VCS Control Software

VCS Control Software Features	Standard Edition	Enterprise Edition
Create, resize, move windows	Yes	Yes
Create and save layouts	Yes	Yes
Sub layout as source	Yes	Yes
Control multiple VCS from same GUI	Yes	Yes
Receive IP commands	Yes	Yes
Source preview	Yes	Yes
Site Map (Multiple walls)	Yes	Yes
Concurrent Clients	One	Unlimited
Scripting engine	--	Yes
Network capture	--	Yes
IP stream capture (cameras, encoders)	--	Yes
User rights management	--	Yes
Logging & scheduling	--	Yes



# AVAILABLE MODELS

Clarity VCS

# Available Models

## Standard Edition

Clarity VCS-STD-4DP4

Clarity VCS-STD-8DP8

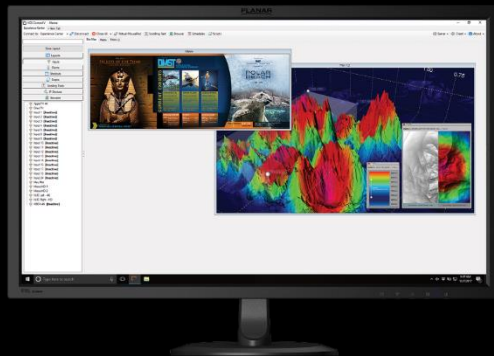
Clarity VCS-STD-12DP12

## Enterprise Edition

Clarity VCS-ENT-4DP4

Clarity VCS-ENT-8DP8

Clarity VCS-ENT-12DP12



**THANK YOU**