



Clarity Visual Control Station Video Wall Processor



Video Wall Image Processing Solution

The Clarity® Visual Control Station™ (VCS™) Video Wall Processor is next-generation video wall processing designed for easy set-up, use, and maintenance. With greater flexibility and ease of use compared to past generations, the latest Clarity VCS enhances Leyard and Planar LED or LCD video walls with multi-video wall support that allows customers to create, re-size and move windows to any location across one or multiple video walls. Clarity VCS also supports a variety of visual inputs including analog, digital and IP network-based video and computer sources.

Clarity VCS is fully configurable to drive video walls of up to 32 high-resolution displays. With Windows® 10-compatible VCS™ Control Software, visual sources can be positioned and resized individually anywhere on the video wall or can instantly revert to one of many preset layouts.

Complete, All-In-One Video Wall Processing Solution

The Clarity VCS video wall processor utilizes a 4U rack-mountable chassis with high-performing 3rd generation PCIe switched fabric backplane. With a powerful server-class CPU, RAID 1 solid state drives and redundant power supplies, Clarity VCS is both powerful and reliable. Clarity VCS is pre-loaded with Windows 10 LTSC, ensuring compatibility with the latest user applications and mission critical environments.

The Clarity VCS chassis includes VCS Graphics DP4+ output cards, each with the ability to drive four displays at up to Full HD resolution (1920 x 1080) or two displays at up to 4K resolution (3840 x 2160). By adding one or more expansion chassis, Clarity VCS can easily support an increased number of high resolution displays and sources.

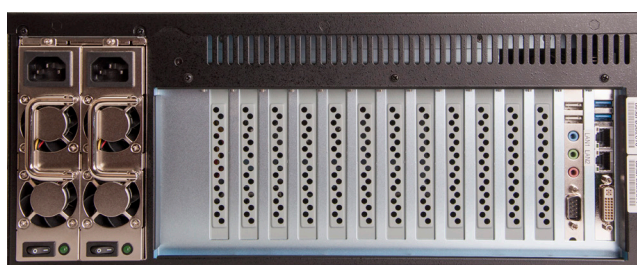
Features & Benefits:

- Expanded connection options including 4K HDMI, DVI, DisplayPort and IP Capture
- Powerful and user-friendly graphical user interface
- Multi-video wall support
- Scalable from small to large installations
- Network-centric collaboration tools
- Extensive control of the software's user access permissions with the integrated user rights management system
- VCS Control Software available in Standard and Enterprise Editions

Front View



Rear View

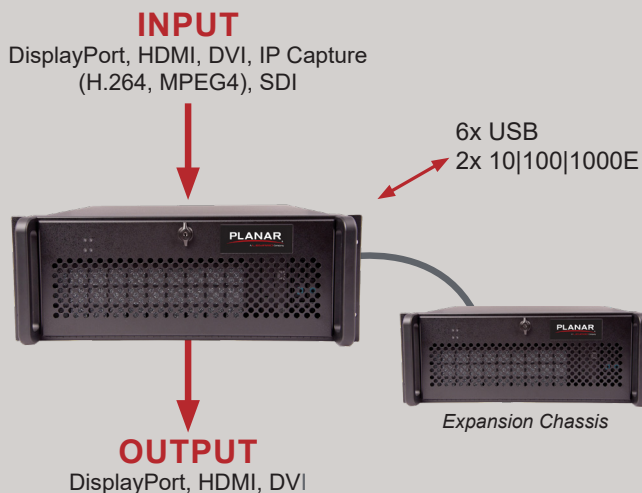


Clarity VCS features server-class CPU, 3rd generation PCIe switched fabric backplane, RAID solid state drives, redundant power supplies and modular expansion.

Broad Range of Source Capture

Clarity VCS offers a selection of input cards to capture and display a wide range of visual sources. Full HD and 4K video sources can be connected via DisplayPort, DVI, HDMI, SDI (SD, HD, 3G), composite and IP Sources. Collaboration tools allow users to share their individual screens on the video wall.

Additionally, Clarity VCS welcomes Windows applications installed and used as content sources. Through different configurations, Clarity VCS can simultaneously display captured sources and local files to provide the flexibility and freedom that is often unachievable with many video wall processors.



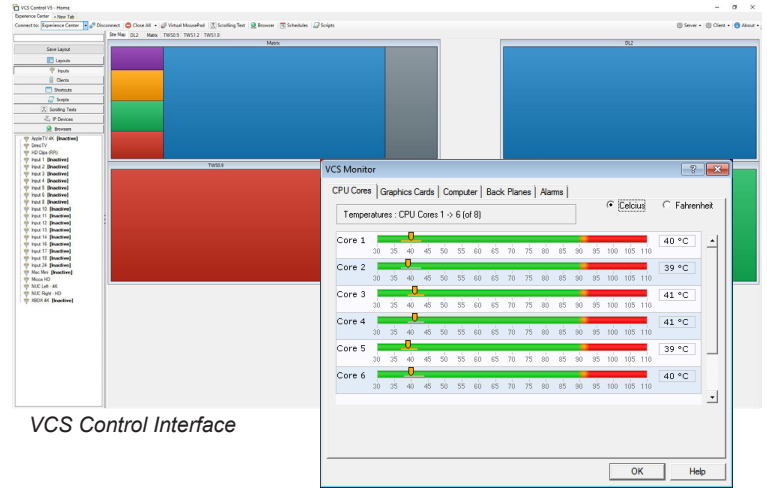
Control and Monitoring Software

The VCS Control Software is available in Standard or Enterprise Editions to offer the power solution to fit your application. Both editions comply with the familiar Windows design standards, making it intuitive and easy to learn.

The Standard Edition is packed with layout features that allow users to create, resize and move windows to any place across one or multiple Leyard and Planar video walls as well as creation of preset layouts.

Features	Standard	Enterprise
Create, resize, move windows	Yes	Yes
Create and save layouts	Yes	Yes
Sub layout as source	Yes	Yes
Control multiple VCS from same interface	Yes	Yes
Receive IP commands	Yes	Yes
Source preview	Yes	Yes
Site Map (Multiple walls)	Yes	Yes
Concurrent Clients	One	Unlimited
Scripting engine	No	Yes
Network capture	No	Yes
IP stream capture (cameras, encoders)	No	Yes
Logging	No	Yes
Scheduling	No	Yes

The Enterprise Edition empowers control and collaboration rooms with a full feature processor. Features like IP capture, scheduling and scripts deliver a higher level of functionality. Unlimited licenses, user rights management, and network capture enables greater teamwork and control.

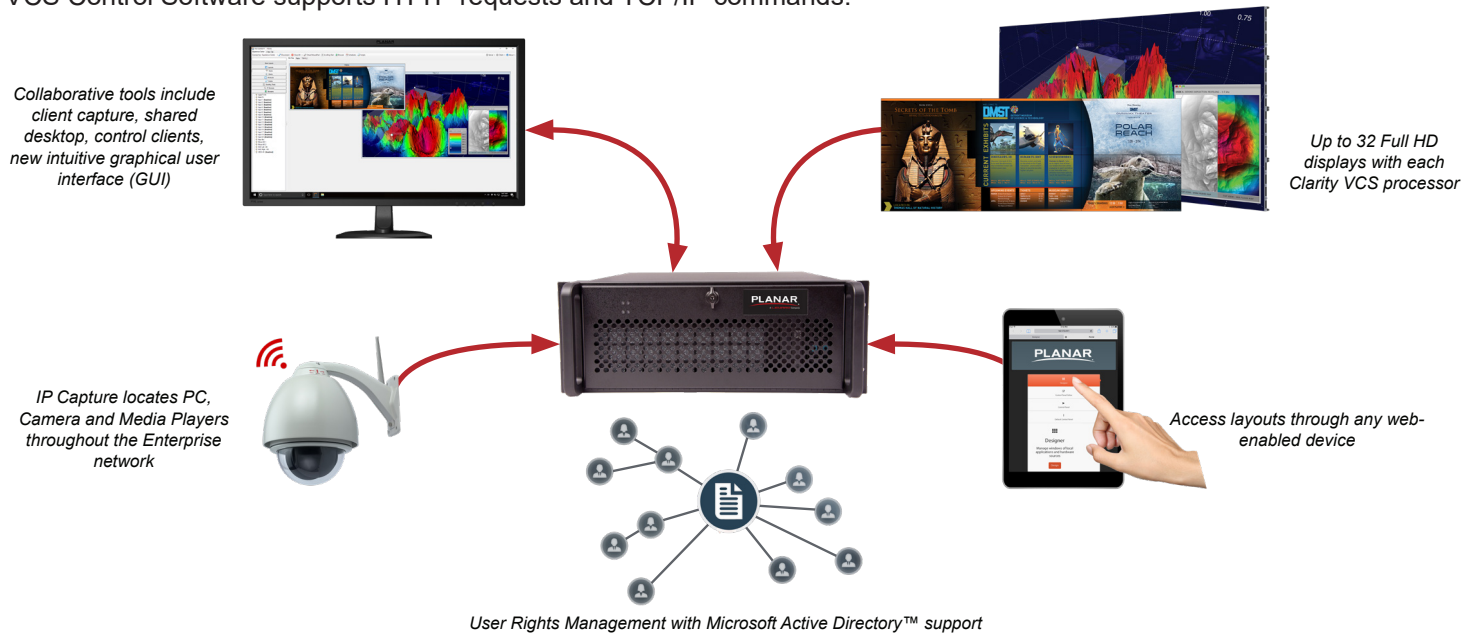


VCS Control Interface

VCS Monitor

Flexible Operation

The VCS Control Software runs directly on the Clarity VCS video wall processor. The software is also manageable on any local or network connected desktop using Windows 10 LTSC OS and linked to Clarity VCS. Clarity VCS can also be controlled by any networked device with web browsing capabilities through the software's web interface control panel. Additionally, the VCS Control Software supports HTTP requests and TCP/IP commands.



CLARITY VCS SPECIFICATIONS

Product Name	VCS6-4DP 4	VCS6-8DP 8	VCS6-12DP 12	Custom
DisplayPort Outputs	4	8	12	Up to 32 outputs - depending on input configuration
HDCP Compliant Inputs (DVI, RGB, HDMI)	4	8	12	
Power Consumption Maximum	300 Watts	337 Watts	374 Watts	
Output Resolution Maximum Per Graphics Card	1920x1080@60Hz for 4 displays 3840x2160@30Hz for 2 displays	1920x1080@60Hz for 8 displays 3840x2160@30Hz for 4 displays	1920x1080@60Hz for 12 displays 3840x2160@30Hz for 6 displays	
Chassis Size (W x H x D)	500 x 175 x 482mm 19.7 x 6.9 x 18.9in			
Chassis Weight	33kg 72.7lb			
Chassis Form Factor	19" 4U industrial PC chassis			
Power Supply	2x 600 Watt, Redundant			
Processor and Memory	Intel® Core™ i7, 32GB DDR4 DRAM			
Operating System	Microsoft® Windows® 10 LTSC			
Backplane	3rd Generation PCIe switched fabric			
Expansion Slots	11 slots/chassis, 8 lanes/slot			
Disk Drive	Dual 250GB SSD in RAID 1 configuration			
Control Monitor Outputs	Integrated DVI output for control screen			
Networking	2x 10/100/1000 Ethernet			
USB Ports	2x USB 3.0 Back, 6x USB 2.0 (2 Front, 2 back, 2 internal)			
Output Adapters for Active DisplayPort	Optional - Active DisplayPort to HDMI or Active DisplayPort to DVI			
Software Control Options	VCS Control Software with Standard or Enterprise Edition			
Software Language Support	English, French, German, Italian, Portuguese, Russian, Spanish			
Software Controller Monitoring	Clarity VCS Monitor			
Operating Temperature (degrees F/C) 5-90% relative humidity, non-condensing	0° to 35° C 32° to 95° F			
Storage Temperature (degrees F/C) 5-90% relative humidity, non-condensing	-20° to 70° C -4° to 158° F			
Regulatory Compliance	FCC, CE, RoHS, UL			
Electronic Component Options	Capture cards, graphics cards, expansion chassis			
Accessory Options	Signal converters and extenders, cables, monitors			
Service Plan Options	Standard two years, extendable up to five years			

STANDARD INPUTS

Signal Type	Video Input Resolution Maximum	Compliance
HDMI	3840 x 2160 @ 30fps 1920 x 1080 @ 60fps	HDCP 1.4
DVI	3840 x 2160 @ 30fps 1920 x 1080 @ 60fps	HDCP 1.4
DisplayPort	3840 x 2160 @ 30fps 1920 x 1080 @ 60fps	HDCP 1.4
IP Signal	3840 x 2160 @ 30fps 1920 x 1080 @ 60fps	H.264
SDI (SD, HD, 3G)	1920 x 1080 @ 60fps	n/a
Composite Signal	720 x 576	n/a

Visit www.Leyard.com for full list of product specifications.

www.leyard.com | www.planar.com

North America
1-866-475-2627
sales@leyardgroup.com

EMEA
+421-907-775-941
sales.emea@leyardgroup.com

APAC
+52 2326 0228
info.asia@leyardgroup.com

Japan
+81-3-6915-2768
info.japan@leyardgroup.com

Latin America
+55-41-3059-5100
info.brazil@leyardgroup.com