

# PLANAR TWS SERIES LED VIDEO WALL DISPLAYS

Product Overview – January 2020

The Planar logo consists of the word "PLANAR" in a bold, white, sans-serif font. A red, curved underline is positioned beneath the letters. A small registered trademark symbol (®) is located to the right of the underline.

**PLANAR**

# Planar® TWS Series

## High-Performance LED Video Wall

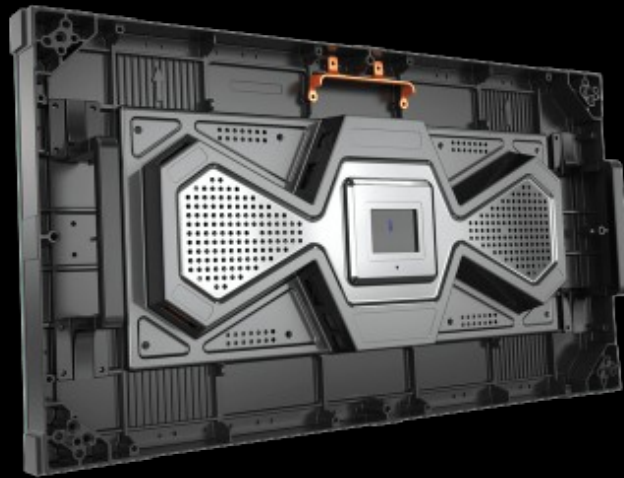
- Family of fine pitch LED video wall displays for high-performance and extended duty-cycles
- Light-weight, convenient form-factor fits more installation environments, more exactly
- Built for image quality, reliability, redundancy and long life



27" diagonal, all-in-one design  
Pitches: 0.9, 1.2, 1.5 and 1.8mm  
Hits Full HD, 4K, 8K exactly

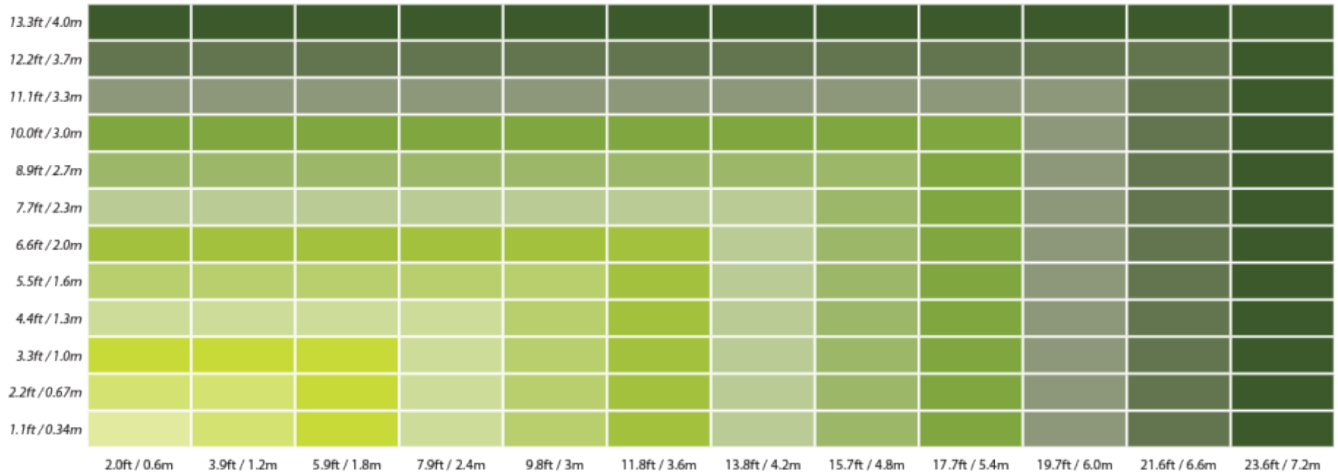
# Fits More Installation Environments

- Magnesium alloy chassis – 30% lighter than aluminum with enhanced heat dissipation
- Easy single-person handling
- 27” diagonal 16:9 size – small enough to fit room dimensions closely, large enough for fast install
- Every pitch hits Full HD, 4K, 8K exactly
- Works well with concave curved video walls



600 x 337.5mm (23.6 x 13.3in)  
Only 4.7kg (10.4lb)

# Planar TWS Series 16:9 Aspect Ratio Walls



All models designed to hit Full HD, 4K, 8K resolutions exactly

But can be configured in any wall configuration desired

Displays	1 x 1	2 x 2	3 x 3	4 x 4	5 x 5	6 x 6	7 x 7	8 x 8	9 x 9	10 x 10	11 x 11	12 x 12
TWS0.9	640 x 360	1280 x 720	1920 x 1080	2560 x 1440	3200 x 1800	3840 x 2160	4480 x 2520	5120 x 2880	5760 x 3240	6400 x 3600	7040 x 3960	7680 x 4320
TWS1.2	480 x 270	960 x 540	1440 x 810	1920 x 1080	2400 x 1350	2880 x 1620	3360 x 1890	3840 x 2160	4320 x 2430	4800 x 2700	5280 x 2970	5760 x 3240
TWS1.5	384 x 216	768 x 432	1152 x 648	1536 x 864	1920 x 1080	2304 x 1296	2688 x 1512	3072 x 1728	3456 x 1944	3840 x 2160	4224 x 2376	4608 x 2592
TWS1.8	320 x 180	640 x 360	960 x 540	1280 x 720	1600 x 900	1920 x 1080	2240 x 1260	2560 x 1440	2880 x 1620	3200 x 1800	3520 x 1980	3840 x 2160

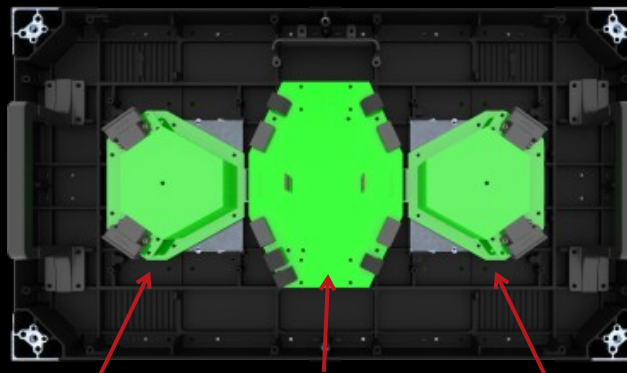
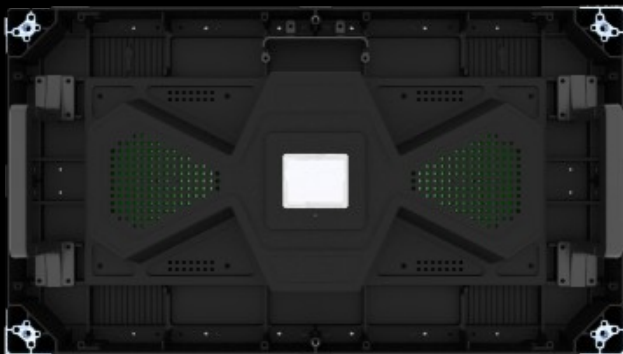
**Full HD** 1920 x 1080

**4K** 3840 x 2160

**8K** 7680 x 4320

# Reliable and Convenient All-in-One Design

- Removable back cover for simple rear service
- 2x standard HDMI input and loop-out pairs with HDCP compliance and redundancy
- Cabinet fits single or redundant power supplies



Power Supply 2

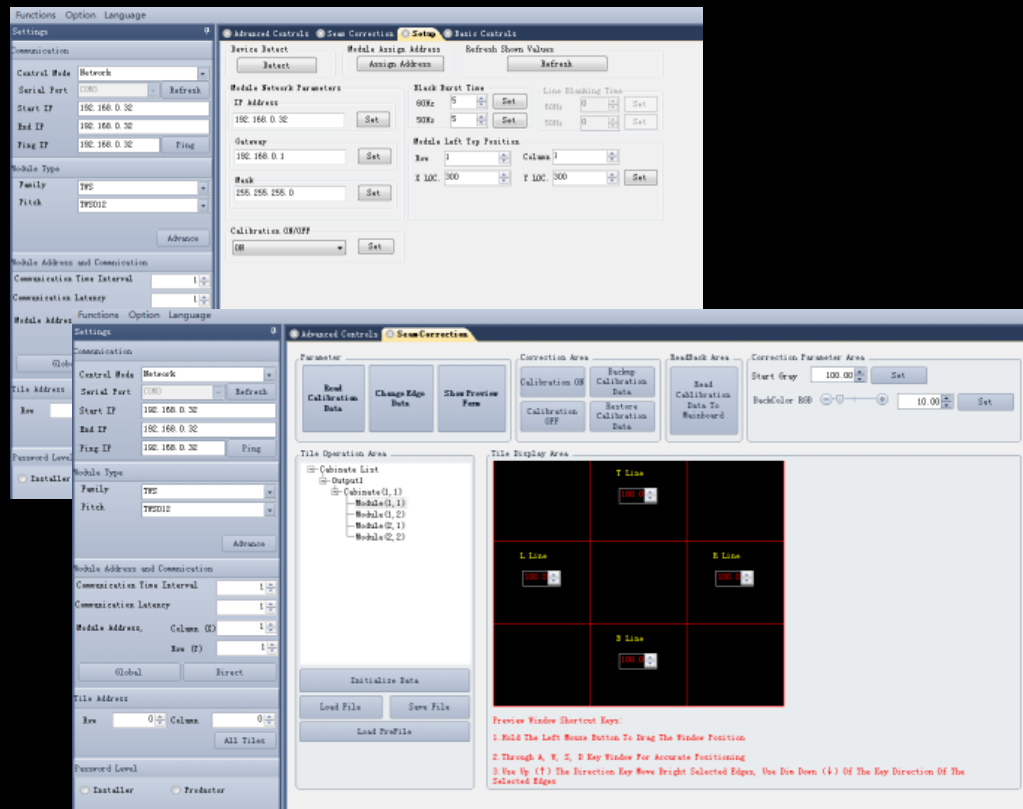
IO & Display

Power Supply 1

# Planar® LED Control Software

## Video Wall Image Control

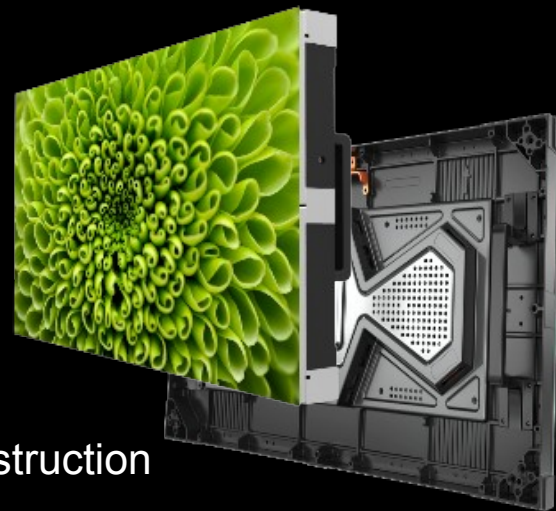
- Windows®-based app for set-up and image control
- Brightness control
- RGB adjustment
- Gamma gray scale adjustment
- Switch between HDMI input and test patterns
- Electronic seam correction – per edge control



# Planar TWS Series

## Key Selling Points

- Full range of fine-pitch LED displays
- 0.9, 1.2, 1.5, 1.8mm pixel pitches
- Super light-weight, thermally efficient cabinet design
- All-in-one, simple to deploy design
- Optimal size for fit, efficient set-up and concave wall construction
- Planar MicroGrid Shader at 1.5mm produces deep blacks
- Power-efficient LED design
- Optimized for Full HD, 4K and 8K
- From the worldwide market leader in fine-pitch LED



# Introducing Planar® LED MultiTouch

Industry's First Standard, Completely Seamless Interactive Fine-Pitch LED Video Wall

- High performance touch
  - 32 simultaneous touch points
  - Excellent tactile feel
  - Anti-static
- Visually superior
  - Uniform color and brightness
  - Anti-glare surface
  - No parallax error
- Easy to deploy and maintain
  - Lightweight, thin and unobtrusive
  - No additional structure or special reinforcement needed
  - Simplifies service



*Available in 108", 151" and 196" diagonal LED video walls*

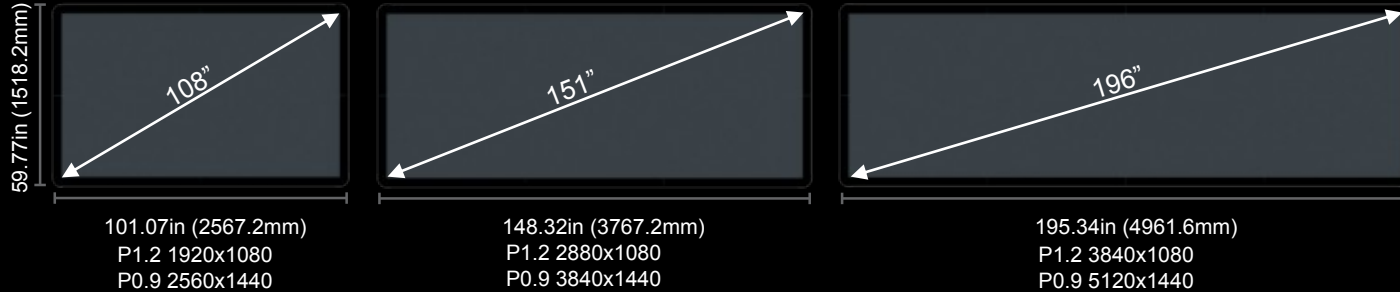
Features Planar® PLTS™ (Pliable LED Touch Surface™) Technology, a specially formulated, lightweight and durable touch material

**PLANAR**



# Planar LED MultiTouch

## Available Models



- Sleek multi-touch frame
  - 32-point IR touch technology
  - Installed Width x Depth: 3.16 x 4.6in (80.25 x 117.4mm)
- Planar PLTS (Pliable LED Touch Surface)
  - Unique and proprietary touch surface with numerous customer advantages
  - Installed in the field and serviceable
- Integrated with Planar® TWS Series in three configurations

# Planar® ERO-LED™ Option

## Extended Ruggedness and Optics for Planar LED Displays

- Proprietary coating applied to leading Planar fine pitch LED displays
- Provides ruggedness and protection
- Improves visual performance
- Enhances existing best-in-class LED display products at a reasonable cost
- Unlocks new applications for fine pitch LED displays
- Available for a range of Planar LED display products and pixel pitches



LED Display Product	Available Pitches (mm)
Planar TWS Series	0.9, 1.2, 1.5, 1.8

**THANK YOU**

**PLANAR**<sup>®</sup>