

PLANAR® TWA SERIES LED VIDEO WALLS

Product Overview – January 2020



Planar® TWA Series

Industry's First Flat-Panel LED Video Wall

- Family of LED video wall displays supporting even the closest viewing distances
- Delivers benefits of unique “flat panel” design
- Outstanding image quality with low power consumption
- Advanced design for reliability and ease of installation and service



54" diagonal, flat panel design
Pitches: 0.9, 1.2, 1.8 and 2.5mm
Hits Full HD, 4K, 8K exactly

Innovative “Flat Panel” Design Benefits

Slim 54” 16:9 Form Factor

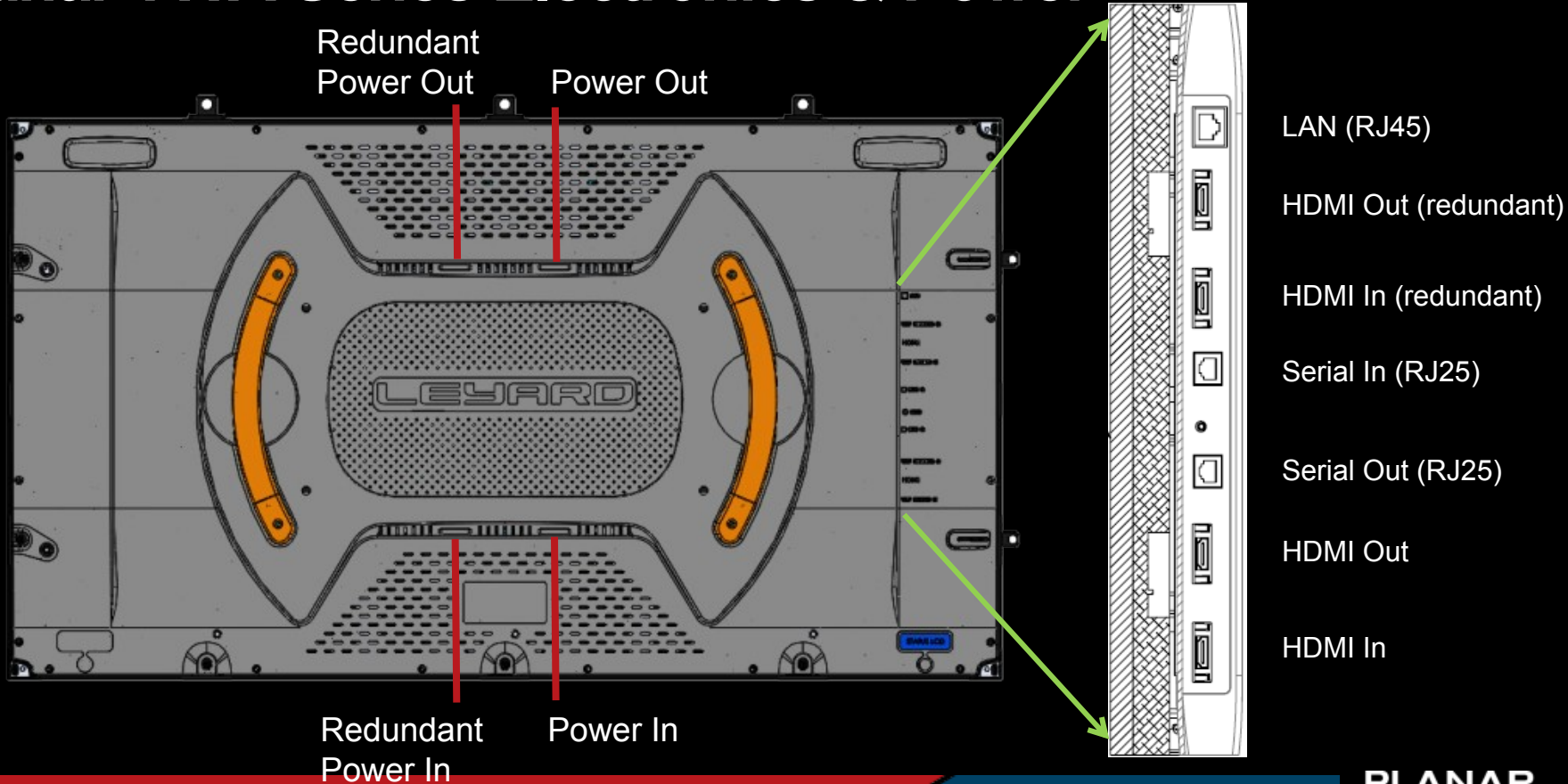
- Self-contained units with std HDMI in / out – no extra boxes, simpler cabling
 - Larger size means more of your wall is factory aligned
- Fewer seams to align in the field; more seams factory calibrated
- Reduced installation time – by up to one half
- Less complex and expensive mounting frame
- Fewer panels means fewer points of service
- 16:9 form factor and HD and Ultra HD resolutions make content development and processing easier out of the box
- Compatibility with more existing installations and existing processors

Planar TWA Series 16:9 Aspect Ratio Walls

Note:
Full HD = 1920 x 1080
4K = 3840 x 2160
8K = 7680 x 4320

PLANAR

Planar TWA Series Electronics & Power



Driving Different Planar TWA Models

Model	Pitch (mm)	Resolution	Full HD	4K	8K	Panels per processor output
Planar TWA0.9	0.9375	1280 x 720	N/A	3 x 3	6 x 6	1
Planar TWA1.2	1.25	960 x 540	2 x 2	4 x 4	8 x 8	4
Planar TWA1.8	1.875	640 x 360	3 x 3	6 x 6	12 x 12	9
Planar TW2.5	2.5	480 x 270	4 x 4	8 x 8	16 x 16	16

Designed for High Image Quality

- Outstanding black levels – black LEDs and Planar® MicroGrid Shader™ and black solder implementations
- Wide viewing angles with excellent off-axis uniformity
- Advanced calibration for maximum full screen color and brightness uniformity
- Machine vision alignment of intra-panel LED boards
- Smooth and consistent grayscale even at low brightness
- Color control to optimize for particular applications

Planar TWA Series Low Power Consumption Design

	Measured Power	Measured Brightness	Watts/ Nit	Savings
Planar TW1.2	620W	600 nits*	1.033	
Planar TWA1.2*	360W		0.600	42% Lower than TW

* Maximum brightness is 800 nits

Reduced Standby Power

- With Direct View LED displays, “off” is more typically “display black”
- As a result, LED displays draw significant power even when “off”
- Planar TWA Series implements a Standby mode that greatly reduces power when the LED video wall is not in use

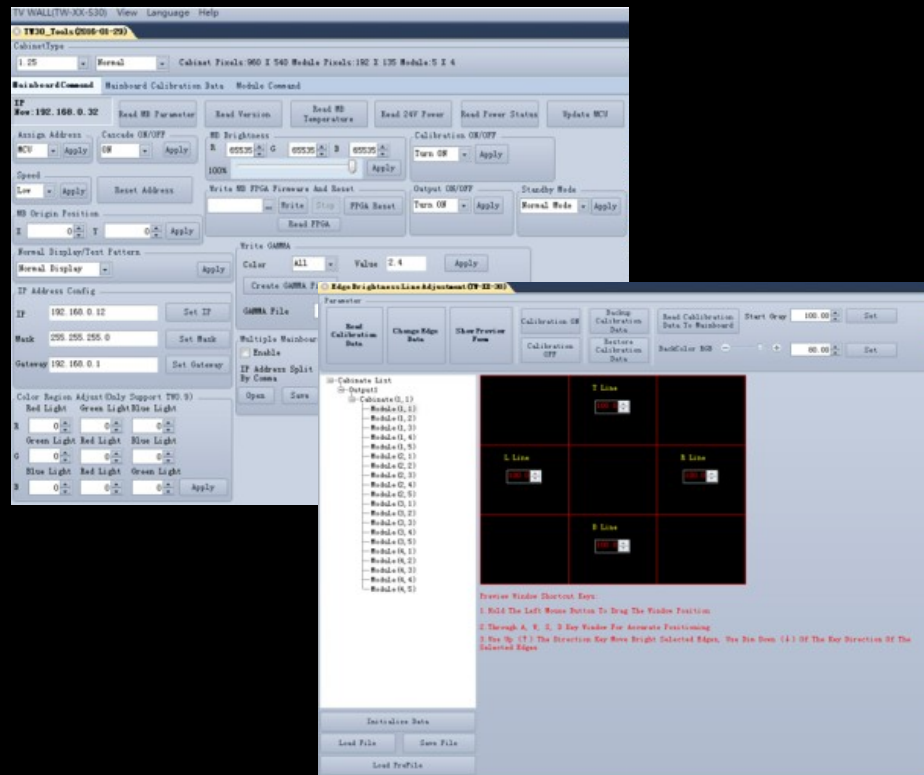
	Planar TWA	Planar TVH, DL1	Brand X 1.9
Display Black	85W / sq m	160W / sq m	190W / sq m
Standby Mode	42W / sq m	NA	NA

- **Planar TWA uses 74 -78% less power** in Standby or “off” mode than with typical LED displays
- For a video wall operating even 12 hours per day, the savings is substantial

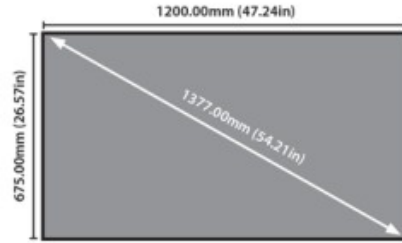
Planar LED Tool Box Software

Video Wall Image Control

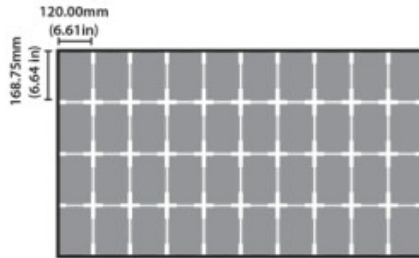
- Windows-based app for set-up and image control
- Brightness control
- RGB adjustment
- Gamma gray scale adjustment
- Switch between HDMI input and test patterns
- Electronic seam correction – per edge control



Planar TWA Series Display and Module Construction

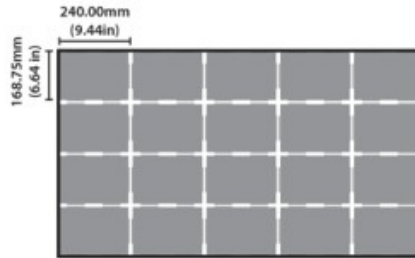


Display Dimensions (w x h x d)	1200 x 675 x 100mm 47.24 x 26.57 x 3.94in
Display Diagonal	1377mm 54.21in



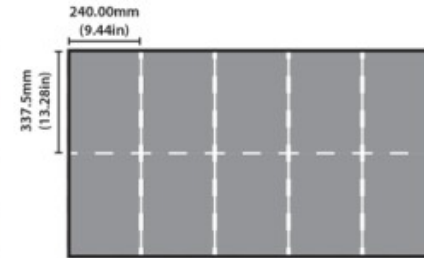
Pitch: 0.9 mm

Modules/Panel	40 modules (10 x 4)
Module Dimensions (w x h)	120 x 168.75mm 6.61 x 6.64in



Pitches: 1.2 and 1.8 mm

Modules/Panel	20 modules (5 x 4)
Module Dimensions (w x h x d)	240 x 168.75mm 9.44 x 6.64in



Pitch: 2.5 mm

Modules/Panel	10 modules (5 x 2)
Module Dimensions (w x h x d)	240 x 337.5mm 9.44 x 13.28in

Planar TWA Series

Key Selling Points

- Wide range of fine-pitch LED displays in the industry
 - 0.9, 1.2, 1.8, 2.5
- Easiest, fastest flat-wall install product available
- Lowest cost of ownership – fewer points of service
- TW/TWA is industry's only seamless direct replacement for LCD
- Lowest power LED design in the industry
- Optimized for Full HD, 4K and 8K
- Attractive price/pixel position
- From the worldwide market leader in fine-pitch LED



Introducing Planar[®] LED MultiTouch

Industry's First Standard, Completely Seamless Interactive Fine-Pitch LED Video Wall

- High performance touch
 - 32 simultaneous touch points
 - Excellent tactile feel
 - Anti-static
- Visually superior
 - Uniform color and brightness
 - Anti-glare surface
 - No parallax error
- Easy to deploy and maintain
 - Lightweight, thin and unobtrusive
 - No additional structure or special reinforcement needed
 - Simplifies service



Available in 108", 151" and 196" diagonal LED video walls

Features Planar[®] PLTS[™] (Pliable LED Touch Surface[™]) Technology, a specially formulated, lightweight and durable touch material

PLANAR

Planar® ERO-LED™ Option

Extended Ruggedness and Optics for Planar LED Displays

- Proprietary coating applied to leading Planar fine pitch LED displays
- Provides ruggedness and protection
- Improves visual performance
- Enhances existing best-in-class LED display products at a reasonable cost
- Unlocks new applications for fine pitch LED displays
- Available for a range of Planar LED display products and pixel pitches



LED Display Product	Available Pitches (mm)
Planar TWA Series	0.9, 1.2, 1.8

Planar LED MultiTouch

Available Models



- Sleek multi-touch frame
 - 32-point IR touch technology
 - Installed Width x Depth: 3.16 x 4.6in (80.25 x 117.4mm)
- Planar PLTS (Pliable LED Touch Surface)
 - Unique and proprietary touch surface with numerous customer advantages
 - Installed in the field and serviceable
- Integrated with Planar® TWA Series in three configurations

THANK YOU

PLANAR[®]