

STEREOSCOPIC 3D IN eDRAWINGS

REQUIREMENTS

eDrawings version 2009 SP2 or higher (32bit or 64bit)

Professional graphics board (Quadro® 2000, Quadro 4000, Quadro 5000)

INSTRUCTIONS

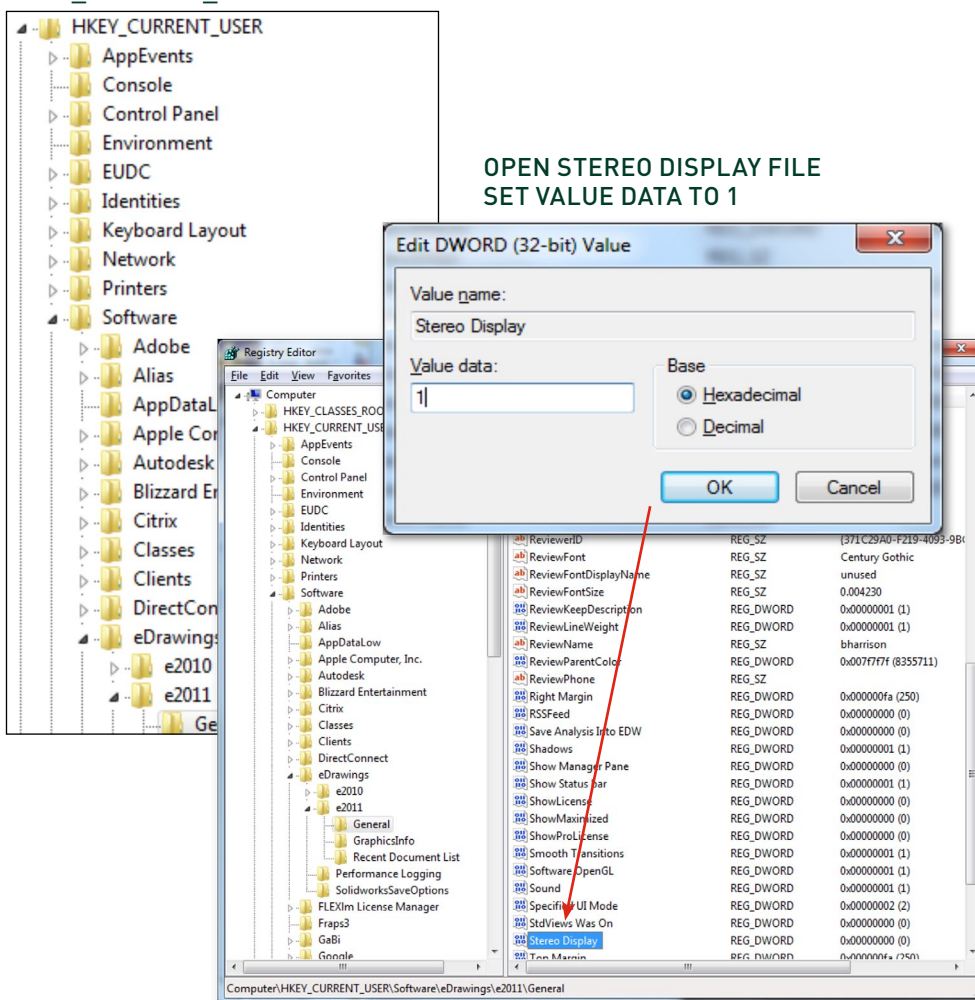
OPEN YOUR COMPUTER'S REGISTRY

- > WINDOWS XP
 - > Start menu (lower left of computer)
 - > Select Run
 - > Type "regedit"
- > WINDOWS 7
 - > Start menu (lower left of computer)
 - > Type 'regedit' in the Search box and hit Enter
- > Find the **HKEY_Current_User** folder
- > Select **Software**
- > Then **eDrawings**
- > Find the eDrawings version you are running (in this example it is e2011)
- > Open the **General** folder
- > Find the **Stereo Display** file
- > Set the **Value data** to 1 to turn on 3D (default setting is 0 or off)

HOW TO ENABLE STEREOSCOPIC 3D IN eDRAWINGS

Using eDrawings in 3D requires a few relatively easy steps to change the default setting. NVIDIA is working with eDrawings so future versions will simply require a button click. But, for now, follow these simple instructions and get ready to put on your 3D glasses!

HKEY_CURRENT_USER FOLDER > SOFTWARE > EDRAWINGS > GENERAL



OPEN STEREO DISPLAY FILE
SET VALUE DATA TO 1

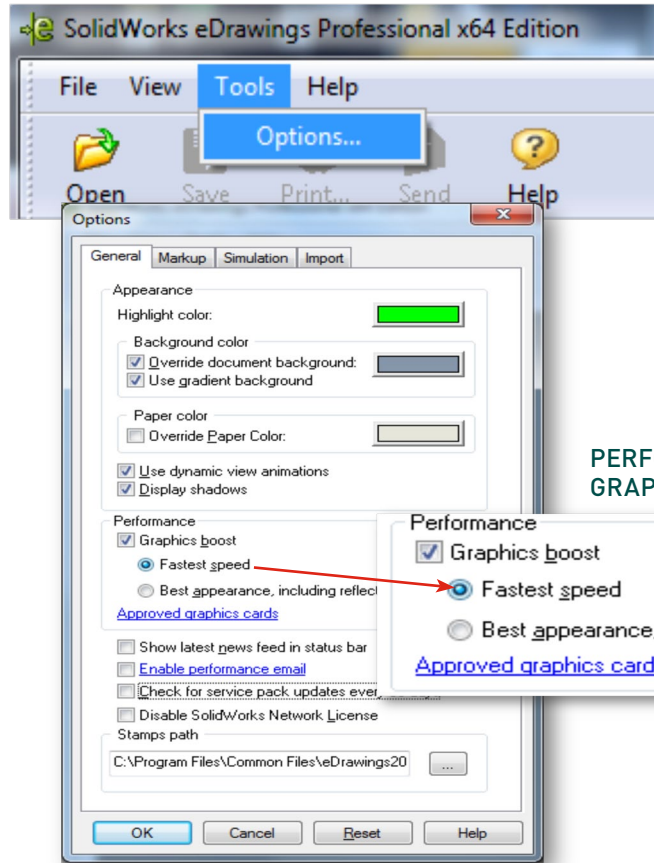
Value name	Value type	Value data
ReviewID	REG_SZ	{371C29A0-F219-4093-98...
ReviewFont	REG_SZ	Century Gothic
ReviewFontDisplayName	REG_SZ	unused
ReviewFontSize	REG_SZ	0.004230
ReviewKeepDescription	REG_DWORD	0x00000001 (1)
ReviewLineWeight	REG_DWORD	0x00000001 (1)
ReviewName	REG_SZ	bharrison
ReviewParentColor	REG_DWORD	0x007F7F7F (8355711)
ReviewPhone	REG_SZ	
Right Margin	REG_DWORD	0x000000fa (250)
RSSFeed	REG_DWORD	0x00000000 (0)
Save Analysis Into EDW	REG_DWORD	0x00000000 (0)
Shadows	REG_DWORD	0x00000001 (1)
Show Manager Pane	REG_DWORD	0x00000000 (0)
Show Status bar	REG_DWORD	0x00000001 (1)
ShowLicense	REG_DWORD	0x00000000 (0)
ShowMaximized	REG_DWORD	0x00000000 (0)
ShowProLicense	REG_DWORD	0x00000000 (0)
Smooth Transitions	REG_DWORD	0x00000001 (1)
Software OpenGL	REG_DWORD	0x00000001 (1)
Sound	REG_DWORD	0x00000001 (1)
Specify UI Mode	REG_DWORD	0x00000002 (2)
StdViews Was On	REG_DWORD	0x00000000 (0)
Stereo Display	REG_DWORD	0x00000001 (1)
Top Margin	REG_DWORD	0x000000fa (250)

INSTRUCTIONS CONT.

- > START THE EDRAWINGS APPLICATION
 - > Select **Tools**, then **Options**
 - > In the Options window, find the **Performance** section
 - > Select **Graphics Boost, Fastest Speed**
 - > Click OK

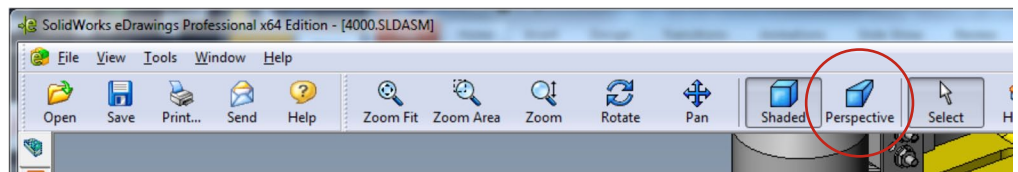
- > OPEN A PART OR ASSEMBLY
 - > Press **Perspective** in the menu bar

START eDRAWINGS APPLICATION > TOOLS > OPTIONS



PERFORMANCE >
GRAPHICS BOOST > FASTEST SPEED

OPEN A PART OR ASSEMBLY / PRESS PERSPECTIVE IN MENU BAR



Stereoscopic 3D is now active! You just need an NVIDIA **3D VISION™ PRO** kit to view.